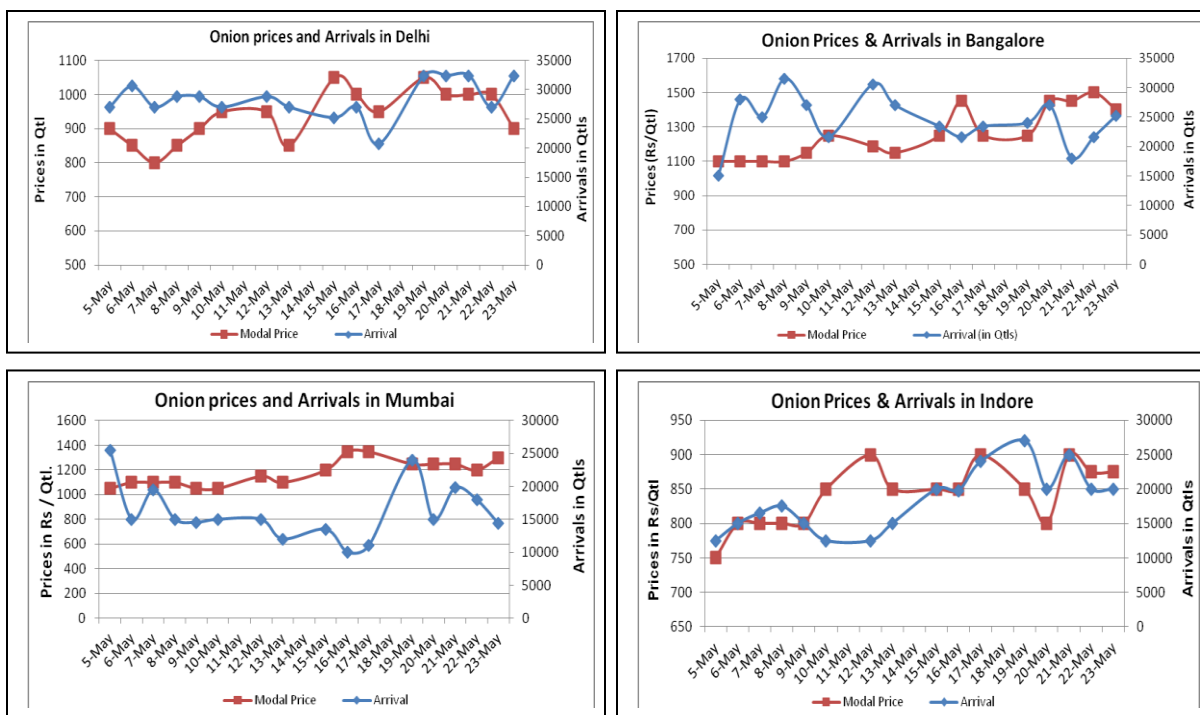


Onion Fundamentals:

- Mixed sentiment reported in the onion major domestic market on Friday.
- In benchmark market of Lasalgaon, model prices reported Rs.1000/- per qtl.
- Buyers were reported active in the domestic market, exporters demand found for good quality material.
- Onion prices likely to go up due to shortage of supply. Onion traders expect lower production amid poor quality arrivals might support the bullish sentiment in coming days.
- In Kanpur domestic market higher Onion demand coming from Assam and West Bengal region and Bangladesh.
- All India, rabi onion storage is expected to be less this year compared to previous year because shelf life of onion have declined this year to higher content of water in onion crop which was due to unseasonal rains and hailstorms.

Onion wholesale Prices & Arrivals in Producing & Consumption Centers



(Source: AGRIWATCH)

Onion Prices & Arrivals in Major Mandis as on 23.5.2014

Mandis	Nashik	Lasalgaon	Pimpalgaon	Niphad	Pune	Indore	Delhi	Bangalore
Price (Rs/Qtl)	600-1300	900-1100	550-1796	Closed	1200-1500	500-1250	700-1100	1200-1600
Arrivals (Qtl)	1200	21250	19500	--	8250	20000	32400	25200

Onion Prices & Arrivals in Major Mandis as on 22.5.2014

Mandis	Nashik	Lasalgaon	Pimpalgaon	Niphad	Pune	Indore	Delhi	Bangalore
Price (Rs/Qtl)	500-1400	800-1100	500-1800	100-1400	800-1300	500-1250	800-1200	1200-1800
Arrivals (Qtl)	2000	14000	28750	36000	8000	20000	27000	21600

(Source: AGRIWATCH)

Onion Prices in major markets – Wholesale vs. Retail as on 23 May 2014

Centre	Min Price	Max Price	Modal Price	Retail Price
AHMEDABAD	500	1250	875	1500
AMRITSAR	100	1250	1150	2000
BANGALORE	800	1200	950	1600
BHUBANESHWAR	1300	1500	1400	1700
CHANDIGARH	800	1000	900	1600
CHENNAI	1500	1700	1600	2000
DELHI	1000	1425	1212	2000
GANGATOK	1400	1800	1600	2000
GUWAHATI	1700	1900	1800	2500
JAIPUR	900	1000	960	1600
KOLKATA	1375	1625	1500	2400
LASALGAON	300	1300	950	1500
LUCKNOW	1200	1400	1300	2000
MUMBAI	900	1050	975	2000
NASIK	1000	1800	1460	2000
PATNA	1300	1600	1450	2000
PIMPALGAON	551	1796	1051	2000
PUNE	1200	1500	1400	2000
RANCHI	1100	1200	1170	1500
SHIMLA	1600	1700	1650	2000

(Source: State Civil Supplies Dept)

Disclaimer

The information contained in this document has been compiled by Agriwatch from sources believed to be reliable, such as NHB, Agmarknet, etc. and directly from traders in mandis. However, users of this data are requested to use the information with due caution and crosscheck with other sources. This document is not, and should not be construed as an offer to sell or buy any commodities. This document may not be reproduced, distributed or published without the express consent of SFAC