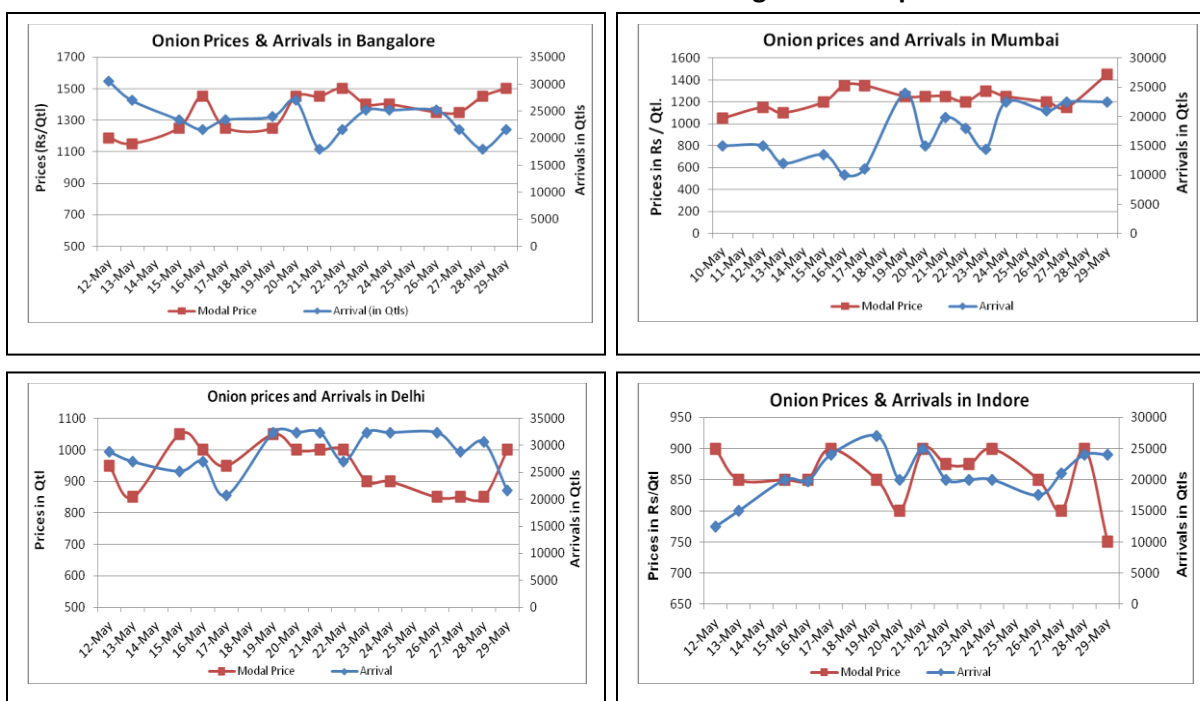


Onion Fundamentals:

- Total Rabi onion production is expected to be in the range of 95-100 lakh tons. Onion sowing and production prospects in next Kharif season will build the sentiment further.
- In benchmark market of Lasalgaon, model prices reported Rs.1010/- per quintal which is approximately 10% higher than previous week. Arrivals are also increasing which suggest that market is firm ahead.
- Onion prices likely to go up due to shortage of supply. Onion traders expect lower production amid poor quality arrivals might support the bullish sentiment in coming days.
- In Kanpur domestic market higher Onion demand coming from Assam and West Bengal region and Bangladesh.

Onion wholesale Prices & Arrivals in Producing & Consumption Centers



(Source: AGRIWATCH)

Onion Prices & Arrivals in Major Mandis as on 29.5.2014

Mandis	Nashik	Lasalgaon	Pimpalgaon	Niphad	Pune	Indore	Delhi	Bangalore
Price (Rs/Qtl)	400-1000	900-1100	500-1800	200-1550	800-1400	500-1000	800-1200	1200-1800
Arrivals (Qtl)	1000	17000	8750	45000	15000	24000	21600	21600

Onion Prices & Arrivals in Major Mandis as on 28.5.2014

Mandis	Nashik	Lasalgaon	Pimpalgaon	Niphad	Pune	Indore	Delhi	Bangalore
Price (Rs/Qtl)	Closed	Closed	Closed	Closed	Closed	500-1300	700-1000	1200-1700
Arrivals (Qtl)	--	--	--	--	--	24000	30600	18000

(Source: AGRIWATCH)

Onion Prices in major markets – Wholesale vs. Retail as on 29 May 2014

Centre	Min Price	Max Price	Modal Price	Retail Price
AHMEDABAD	1000	1600	1300	1800
BANGALORE	1900	2100	2000	2500
BHUBANESHWAR	1325	1425	1380	1600
CHENNAI	1900	2100	2000	2800
DELHI	1360	1800	1580	2200
DELHI	1300	1500	1400	1800
GANGATOK	1400	1600	1500	1800
GUWAHATI	1600	1700	1650	2200
JAIPUR	1000	1100	1060	1800
JAMMU	1500	1600	1550	2000
KOLKATA	1380	1400	1390	1700
LUCKNOW	1350	1500	1425	2000
MUMBAI	1500	1750	1625	2000
MUMBAI	1600	1800	1700	2400
NAGPUR	1200	1800	1500	2200
PATNA	1350	1650	1500	2000
PUNE	1600	1700	1650	2000
RAIPUR	1400	1500	1450	2000
RANCHI	1200	1285	1265	1600
SHIMLA	2100	2300	2200	2500
SRINAGAR	1800	2100	2000	2500
TRIVANDRUM	2400	2800	2600	3500

(Source: State Civil Supplies Dept)

Disclaimer

The information contained in this document has been compiled by Agriwatch from sources believed to be reliable, such as NHB, Agmarknet, etc. and directly from traders in mandis. However, users of this data are requested to use the information with due caution and crosscheck with other sources. This document is not, and should not be construed as an offer to sell or buy any commodities. This document may not be reproduced, distributed or published without the express consent of SFAC