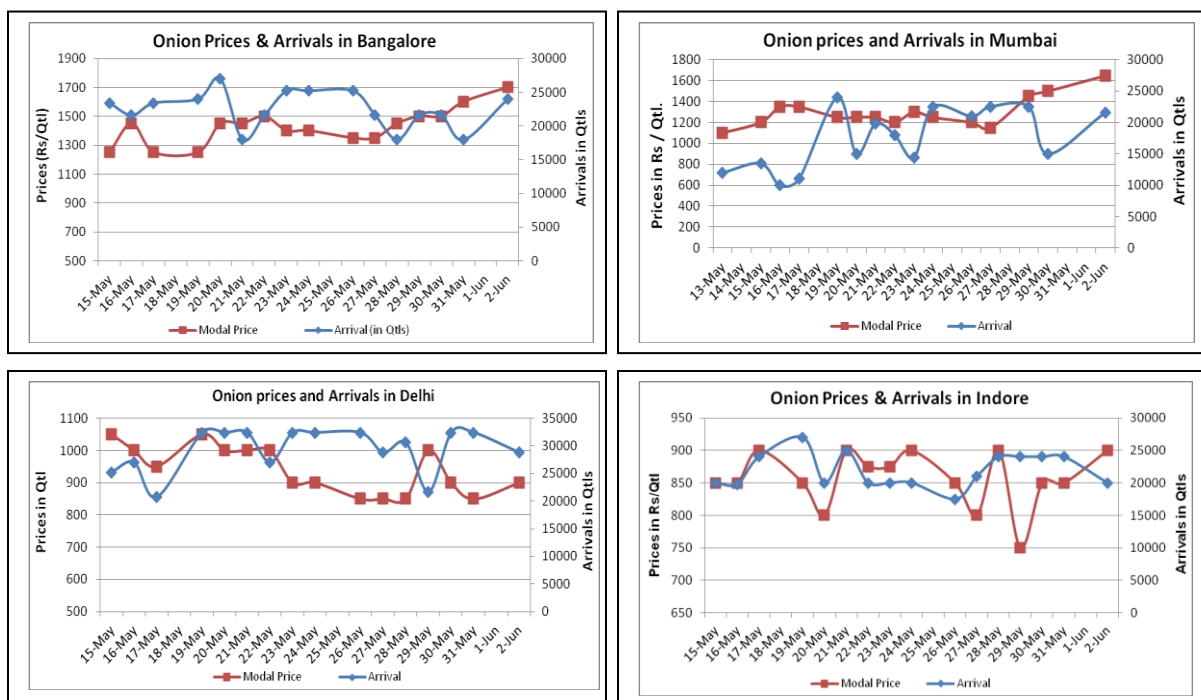


Onion Fundamentals:

- Onion prices were reported up on Monday.
- In benchmark market of Lasalgaon, model prices reported Rs.1200/- per quintal which is approximately Rs.200/- higher than previous day. Arrivals are also increasing which suggest that market is firm ahead.
- In M.P, total Rabi acreage is approximately 110000 hectares compared to last year 104000 hectares. Area affected due to unseasonal rains and hailstorm is approximately 12000 hectares.
- Total Rabi onion production is expected to be in the range of 95-100 lakh tons. Onion sowing and production prospects in next Kharif season will build the sentiment further.
- Onion prices likely to go up due to shortage of supply. Onion traders expect lower production amid poor quality arrivals might support the bullish sentiment in coming days.
- In Kanpur domestic market higher Onion demand coming from Assam and West Bengal region and Bangladesh.

Onion wholesale Prices & Arrivals in Producing & Consumption Centers



(Source: AGRIWATCH)

Onion Prices & Arrivals in Major Mandis as on 02.6.2014

Mandis	Nashik	Lasalgaon	Pimpalgaon	Niphad	Pune	Indore	Delhi	Bangalore
Price (Rs/Qtl)	700-1400	1000-1400	900-1500	500-1700	-	500-1300	700-1100	1400-2000
Arrivals (Qtl)	2000	17000	17500	30000	-	20000	28800	24000

Onion Prices & Arrivals in Major Mandis as on 31.5.2014

Mandis	Nashik	Lasalgaon	Pimpalgaon	Niphad	Pune	Indore	Delhi	Bangalore
Price (Rs/Qtl)	300-1100	Closed	Closed	300-1525	Closed	500-1300	600-1100	1400-1800
Arrivals (Qtl)	900	Closed	Closed	36000	Closed	15000	32400	18000

(Source: AGRIWATCH)

Onion Prices in major markets – Wholesale vs. Retail as on 02 June 2014

Centre	Min. Price	Max. Price	Modal Price	Retail Price
AMRITSAR	1000	1300	1150	2000
BANGALORE	1200	1400	1300	1800
CHANDIGARH	850	1050	900	1800
CHENNAI	1800	2000	1900	2400
DELHI	1050	1400	1225	2000
GUWAHATI	1700	1900	1800	2500
JAIPUR	900	1000	960	1600
JAMMU	1300	1400	1350	1800
LASALGAON	850	1450	1100	1650
LUCKNOW	1300	1500	1400	2000
NASIK	1000	1600	1310	1800
PATNA	1200	1500	1350	2000
PIMPALGAON	400	1426	901	1650
PUNE	1000	1400	1200	1800
RANCHI	1260	1330	1300	1600
SHIMLA	1700	1800	1750	2000
SRINAGAR	1650	2000	1800	2500
TRIVANDRUM	1700	1900	1800	2400

(Source: State Civil Supplies Dept)

Disclaimer

The information contained in this document has been compiled by Agriwatch from sources believed to be reliable, such as NHB, Agmarknet, etc. and directly from traders in mandis. However, users of this data are requested to use the information with due caution and crosscheck with other sources. This document is not, and should not be construed as an offer to sell or buy any commodities. This document may not be reproduced, distributed or published without the express consent of SFAC