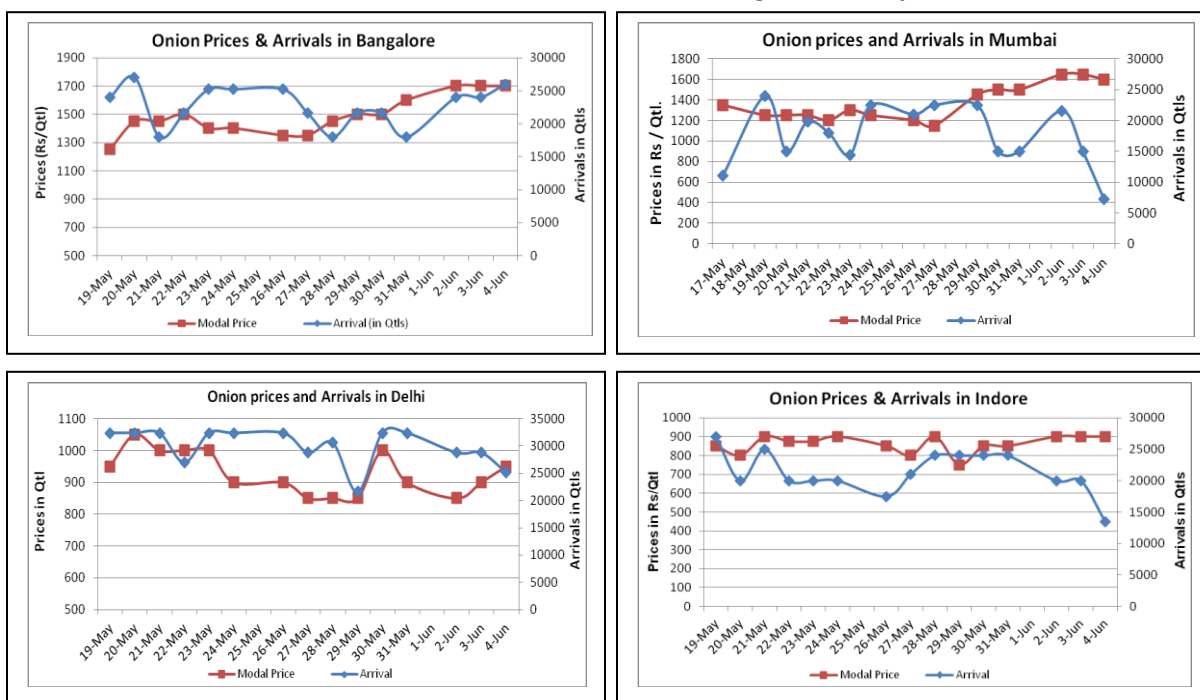


### Onion Fundamentals:

- In Delhi, onion is arriving in market from Rajasthan, MP and Pune which are contributing approximately 57%, 23% and 20% respectively.
- In Nashik, Malegaon Tehsil onion crop has affected a lot because here 80 % of crop is grown in Rabi and rest 20% in Unhali. Loss in Rabi crop was due to hailstorms and rains.
- In Niphad Tehsil of Nasik, 70% of onion is grown in unhali season and 30% onion in Rabi season. According to sources, onion is stored higher than last year but crop is expected to spoil soon because of higher water content in it.
- In benchmark market of Lasalgaon, model prices reported Rs.1000/- per quintal which is approximately 1% lower than previous week. Arrivals are also similar to last week which suggests that market is stable and may remain firm ahead.

### Onion wholesale Prices & Arrivals in Producing & Consumption Centers



(Source: AGRIWATCH)

### Onion Prices & Arrivals in Major Mandis as on 4.6.2014

Mandis	Nashik	Lasalgaon	Pimpalgaon	Niphad	Pune	Indore	Delhi	Bangalore
Price (Rs/Qtl)	900-1500	Closed	Closed	Closed	Closed	500-1300	700-1100	1400-2000
Arrivals (Qtl)	2000	Closed	Closed	Closed	Closed	13500	25200	26000

### Onion Prices & Arrivals in Major Mandis as on 3.6.2014

Mandis	Nashik	Lasalgaon	Pimpalgaon	Niphad	Pune	Indore	Delhi	Bangalore
Price (Rs/Qtl)	1000-1500	1100-1200	800-1700	500-1500	Closed	500-1300	700-1200	1400-2000
Arrivals (Qtl)	2400	13000	16250	42000	Closed	20000	28800	24000

### Onion Prices in major markets – Wholesale vs. Retail as on 4 June 2014

Centre	Min. Price	Max. Price	Modal. Price	Retail. Price
BHUBANESHWAR	1400	1600	1500	1900
CHENNAI	1800	2000	1900	2400
DELHI	1000	1450	1225	2000
GANGATOK	2000	2400	2200	2500
GUWAHATI	1650	1850	1750	2500
HYDERABAD	700	900	800	1300
JAIPUR	900	1000	955	1600
JAMMU	1400	1600	1500	2000
NAGPUR	700	1300	1000	2000
NASIK	1000	1500	1300	1700
PATNA	1200	1500	1350	2000
PUNE	1000	1500	1250	2000
RAIPUR	1000	1200	1160	1600
RANCHI	1210	1275	1245	1600
SHIMLA	1650	1750	1700	2000
SRINAGAR	1700	1900	1800	2200

(Source: State Civil Supplies Dept)

#### Disclaimer

The information contained in this document has been compiled by Agriwatch from sources believed to be reliable, such as NHB, Agmarknet, etc. and directly from traders in mandis. However, users of this data are requested to use the information with due caution and crosscheck with other sources. This document is not, and should not be construed as an offer to sell or buy any commodities. This document may not be reproduced, distributed or published without the express consent of SFAC



**SFAC**  
लघु कृषक  
कृषि व्यापार संघ

Small Farmers'  
Agribusiness  
Consortium



**AGRIWATCH**