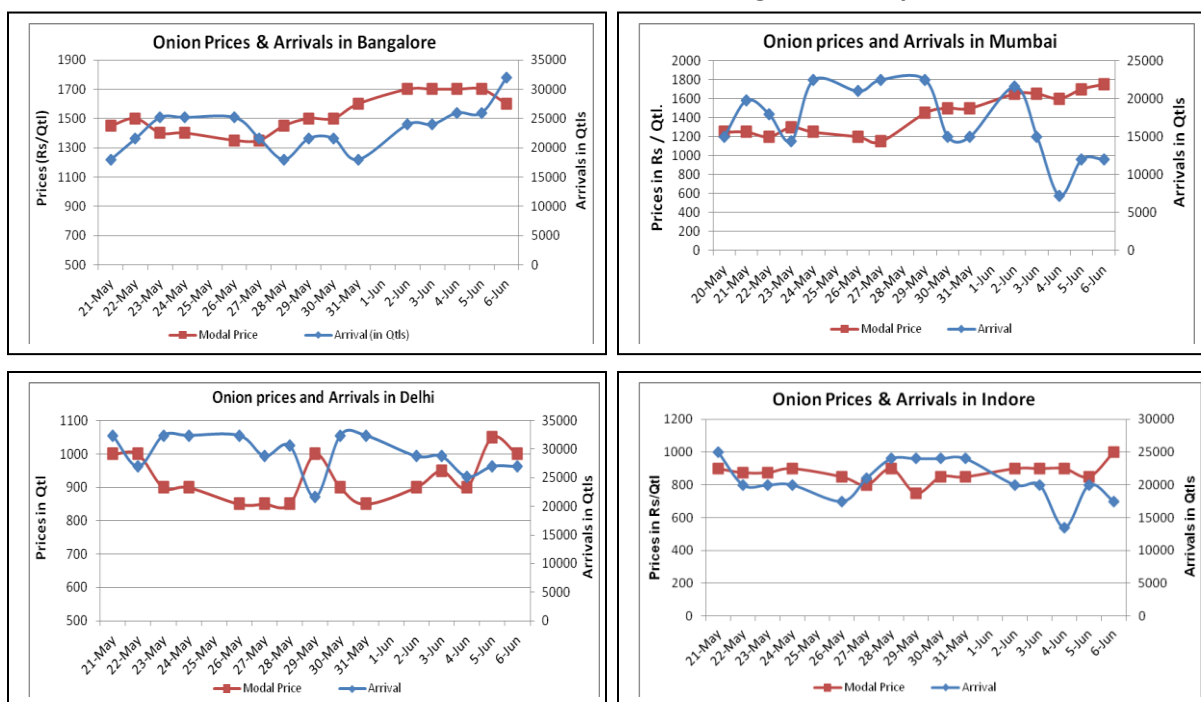


### Onion Fundamentals:

- Lower arrivals in Indore and Mumbai market put support the Onion prices on Friday.
- In Karnataka, kharif sowing has started and so far approximately 3 % of total targeted area has been sown.
- In Nashik, Malegaon Tehsil onion crop has affected a lot because here 80 % of crop is grown in Rabi and rest 20% in Unhali. Loss in Rabi crop was due to hailstorms and rains.
- In Niphad Tehsil of Nasik, 70% of onion is grown in unhali season and 30% onion in Rabi season. According to sources, onion is stored higher than last year but crop is expected to spoil soon because of higher water content in it.
- In benchmark market of Lasalgaon, model prices reported Rs.1000/- per quintal which is approximately 1% lower than previous week. Arrivals are also similar to last week which suggests that market is stable and may remain firm ahead.

### Onion wholesale Prices & Arrivals in Producing & Consumption Centers



(Source: AGRIWATCH)

### Onion Prices & Arrivals in Major Mandis as on 6.6.2014

Mandis	Nashik	Lasalgaon	Pimpalgaon	Niphad	Pune	Indore	Delhi	Bangalore
Price (Rs/Qtl)	800-1400	1000-1400	1000-1500	Closed	Closed	500-1500	700-1300	1400-1800
Arrivals (Qtl)	3000	17000	12500	Closed	Closed	17500	27000	32000

### Onion Prices & Arrivals in Major Mandis as on 5.6.2014

Mandis	Nashik	Lasalgaon	Pimpalgaon	Niphad	Pune	Indore	Delhi	Bangalore
Price (Rs/Qtl)	-	1000-1400	1000-1500	400-1500	Closed	300-1400	800-1300	1400-2000
Arrivals (Qtl)	-	15000	13750	32400	Closed	20000	27000	26000

(Source: AGRIWATCH)

## Onion Prices in major markets – Wholesale vs. Retail as on 6 June 2014

Centre	Min. Price	Max. Price	Modal Price	Retail Price
AHMEDABAD	600	1400	1000	1600
AMRITSAR	1050	1250	1150	2000
BANGALORE	1800	2200	2000	2600
BHUBANESHWAR	1050	1250	1100	1600
CHANDIGARH	875	1125	1000	2000
CHENNAI	1800	2000	1900	2600
DELHI	1000	1575	1287	2000
GANGATOK	2000	2400	2200	2500
GUWAHATI	1500	1700	1600	2500
JAIPUR	800	900	860	1400
JAMMU	1400	1600	1500	2000
KOLKATA	1750	2000	1875	2700
LUCKNOW	1000	1600	1300	2000
NASIK	1100	1500	1310	1700
PATNA	1200	1500	1350	2000
PIMPALGAON	500	1700	1051	1900
RANCHI	1100	1300	1250	1600
TRIVANDRUM	1850	2200	2000	2600

(Source: State Civil Supplies Dept)

### Disclaimer

The information contained in this document has been compiled by Agriwatch from sources believed to be reliable, such as NHB, Agmarknet, etc. and directly from traders in mandis. However, users of this data are requested to use the information with due caution and crosscheck with other sources. This document is not, and should not be construed as an offer to sell or buy any commodities. This document may not be reproduced, distributed or published without the express consent of SFAC



**SFAC**  
लघु कृषक  
कृषि व्यापार संघ

Small Farmers'  
Agribusiness  
Consortium



**AGRIWATCH**