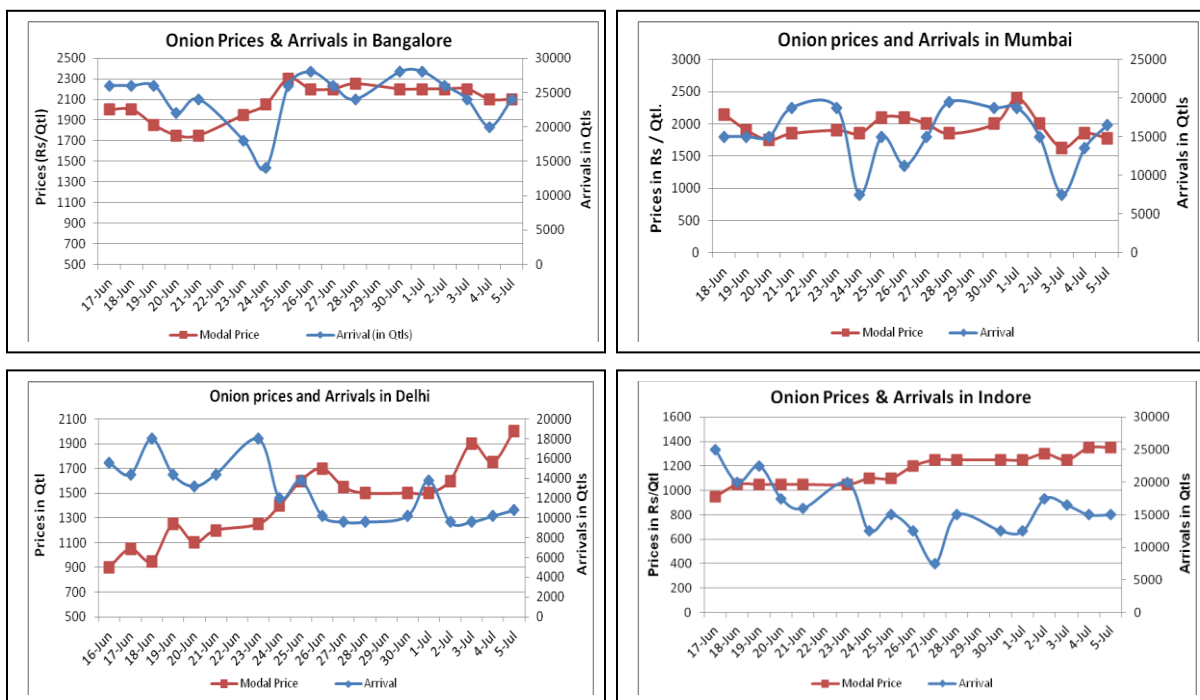


Onion Fundamentals:

- Onion arrivals slightly recover in major domestic market on Saturday.
- In Delhi, as per consumer affairs data wholesale modal prices are hovering around Rs 1875/ quintal whereas retail prices are in the range of Rs 3100/ quintal.
- Government has increased the MEP of \$500/ ton from \$300/ton to curb down the rising prices.
- Government has asked State governments to imposed stock limits on onion so that rising prices may bring down.
- Kharif sowing has started which is already delayed by 10-15 days. So far it is expected that if situation remains same we are expecting a total production of 45-50 lakh ton compared to previous year production of approximately 60 lakh ton.

Onion wholesale Prices & Arrivals in Producing & Consumption Centers



(Source: AGRIWATCH)

Note : The above graph is made on data collected by Agriwatch through private sources because Agmarknet data are not consistent and lots of gaps in reporting.

Onion Prices & Arrivals in Major Mandis as on 5.7.2014

Mandis	Nashik	Lasalgaon	Pimpalgaon	Niphad	Pune	Indore	Delhi	Bangalore
Price (Rs/Qtl)	1700-2500	Closed	Closed	500-2500	Closed	500-2200	1400-2600	1600-2600
Arrivals (Qtl)	3000	Closed	Closed	30000	Closed	15000	10800	24000

Onion Prices & Arrivals in Major Mandis as on 4.7.2014

Mandis	Nashik	Lasalgaon	Pimpalgaon	Niphad	Pune	Indore	Delhi	Bangalore
Price (Rs/Qtl)	1500-2200	1300-2400	1000-2300	Closed	1500-2400	500-2200	1000-2500	1600-2600
Arrivals (Qtl)	2800	11000	13750	Closed	12500	15000	10200	20000

(Source: AGRIWATCH)

Onion Prices in major markets – Wholesale vs. Retail as on 5 July 2014

ONION- Wholesale and Retail Prices		
Centre	Wholesale Prices (Rs./Qtl.)	Retail Prices (Rs./Qtl.)
	5-Jul-14	5-Jul-14
DELHI	1875	3100
LUCKNOW	NR	NR
AHMEDABAD	2500	2700
BHOPAL	1500	1800
MUMBAI	2100	2900
JAIPUR	1400	2000
BHUBANESHWAR	2350	2800
KOLKATA	2200	3400
HYDERABAD	2400	2600
BENGALURU	2800	3000
THIRUVANANTHAPURAM	3000	3300
CHENNAI	2400	2700

(Source: Consumer Affairs)

Disclaimer

The information contained in this document has been compiled by Agriwatch from sources believed to be reliable, such as NHB, Agmarknet, etc. and directly from traders in mandis. However, users of this data are requested to use the information with due caution and crosscheck with other sources. This document is not, and should not be construed as an offer to sell or buy any commodities. This document may not be reproduced, distributed or published without the express consent of SFAC



SFAC
लघु कृषक
कृषि व्यापार संघ

Small Farmers'
Agribusiness
Consortium



AGRIWATCH