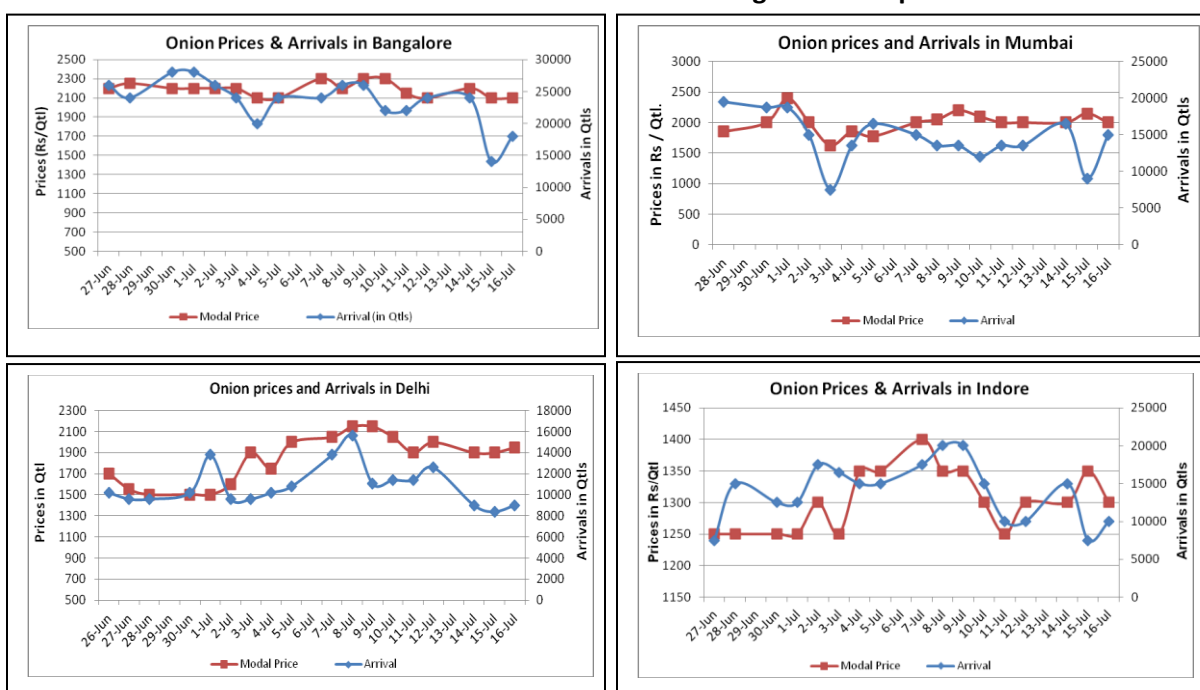


### Onion Fundamentals:

- In Delhi, as per consumer affairs data wholesale modal prices are hovering around Rs 1875/ quintal whereas retail prices are in the range of Rs 3400/ quintal.
- Government has asked State governments to imposed stock limits on onion so that rising prices may bring down.
- Rabi production is estimated at 100-105 Lakh ton. State wise production estimate is Maharashtra, Karnataka, and M.P is approximately 27.5 lakh ton, 4.37 lakh ton, 23.1 lakh tons respectively.
- Weighted average yield of Rabi onion in Maharashtra state is estimated to be 16 ton/Ha without considering immediate post harvest damage.

### Onion wholesale Prices & Arrivals in Producing & Consumption Centers



(Source: AGRIWATCH)

Note : The above graph is made on data collected by Agriwatch through private sources because Agmarknet data are not consistent and lots of gaps in reporting.

### Onion Prices & Arrivals in Major Mandis as on 16.7.2014

Mandis	Nashik	Lasalgaon	Pimpalgaon	Niphad	Pune	Indore	Delhi	Bangalore
Price (Rs/Qtl)	1800-2100	1500-2000	1900-2100	1000-2200	2000-2400	500-2100	1400-2500	1700-2500
Arrivals (Qtl)	700	11000	10000	30000	6000	10000	9000	18000

### Onion Prices & Arrivals in Major Mandis as on 15.7.2014

Mandis	Nashik	Lasalgaon	Pimpalgaon	Niphad	Pune	Indore	Delhi	Bangalore
Price (Rs/Qtl)	1900-2300	1500-2000	1900-2000	700-2200	2000-2400	500-2200	1400-2400	1700-2500
Arrivals (Qtl)	1000	9000	15000	36000	7000	7500	8400	14000

(Source: AGRIWATCH)

## Onion Prices in major markets – Wholesale vs. Retail as on 16 July 2014

ONION-Wholesale and Retail Prices		
Centre	Wholesale Prices (Rs./Qtl)	Retail Prices (Rs./Qtl)
	16-Jul-14	16-Jul-14
DELHI	1875	3400
LUCKNOW	2500	3000
AHMEDABAD	2600	2800
BHOPAL	1500	1800
MUMBAI	2200	2900
JAIPUR	1200	1800
BHUBANESHWAR	2400	2800
KOLKATA	2400	3200
HYDERABAD	2400	2600
BENGALURU	3200	3400
TRIVANDRUM	3100	3400
CHENNAI	2600	3100

(Source: Consumer Affairs)

**Disclaimer**

The information contained in this document has been compiled by Agriwatch from sources believed to be reliable, such as NHB, Agmarknet, etc. and directly from traders in mandis. However, users of this data are requested to use the information with due caution and crosscheck with other sources. This document is not, and should not be construed as an offer to sell or buy any commodities. This document may not be reproduced, distributed or published without the express consent of SFAC



**SFAC**  
लघु कृषक  
कृषि व्यापार संघ

Small Farmers'  
Agribusiness  
Consortium



**AGRIWATCH**