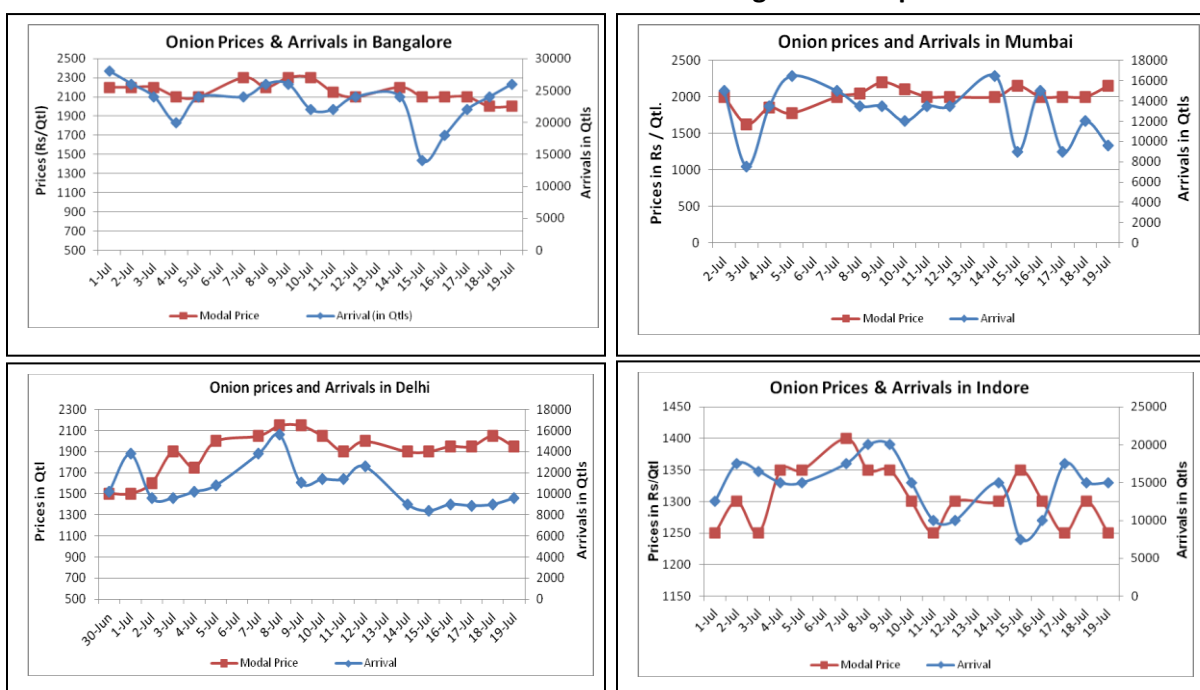


Onion Fundamentals:

- In Delhi, as per consumer affairs data wholesale modal prices are hovering around Rs 1938/ quintal whereas retail prices are in the range of Rs 3300/ quintal.
- According to news sources, traders have started importing onion from Afghanistan. In coming days it is expected that 10-15 trucks may arrive everyday.
- Rabi production is estimated at 100-105 Lakh ton. State wise production estimate is Maharashtra, Karnataka, and M.P is approximately 27.5 lakh ton, 4.37 lakh ton, 23.1 lakh tons respectively.
- Weighted average yield of Rabi onion in Maharashtra state is estimated to be 16 ton/Ha without considering immediate post harvest damage.

Onion wholesale Prices & Arrivals in Producing & Consumption Centers



(Source: AGRIWATCH)

Note : The above graph is made on data collected by Agriwatch through private sources because Agmarknet data are not consistent and lots of gaps in reporting.

Onion Prices & Arrivals in Major Mandis as on 19.7.2014

Mandis	Nashik	Lasalgaon	Pimpalgaon	Niphad	Pune	Indore	Delhi	Bangalore
Price (Rs/Qtl)	1800-2200	Closed	Closed	1000-2200	Closed	500-2000	1400-2500	1700-2300
Arrivals (Qtl)	400	Closed	Closed	24000	Closed	15000	9600	26000

Onion Prices & Arrivals in Major Mandis as on 18.7.2014

Mandis	Nashik	Lasalgaon	Pimpalgaon	Niphad	Pune	Indore	Delhi	Bangalore
Price (Rs/Qtl)	1800-2300	1800-2300	1600-2400	Closed	2100-2600	500-2100	1500-2600	1700-2300
Arrivals (Qtl)	800	11000	10875	Closed	8000	15000	9000	24000

(Source: AGRIWATCH)

Onion Prices in major markets – Wholesale vs. Retail as on 18 July 2014

ONION-Wholesale and Retail Prices		
Centre	Wholesale Prices (Rs./Qtl)	Retail Prices (Rs./Qtl)
	18-Jul-14	18-Jul-14
DELHI	1938	3300
LUCKNOW	2500	3000
AHMEDABAD	2800	3000
BHOPAL	1500	1800
MUMBAI	2300	2900
JAIPUR	1400	2200
BHUBANESHWAR	2400	2800
KOLKATA	2400	3200
HYDERABAD	2600	2800
BENGALURU	3500	3800
TRIVANDRUM	3200	3400
CHENNAI	2600	3100

(Source: Consumer Affairs)

Disclaimer

The information contained in this document has been compiled by Agriwatch from sources believed to be reliable, such as NHB, Agmarknet, etc. and directly from traders in mandis. However, users of this data are requested to use the information with due caution and crosscheck with other sources. This document is not, and should not be construed as an offer to sell or buy any commodities. This document may not be reproduced, distributed or published without the express consent of SFAC



SFAC
लघु कृषक
कृषि व्यापार संघ

Small Farmers'
Agribusiness
Consortium



AGRIWATCH