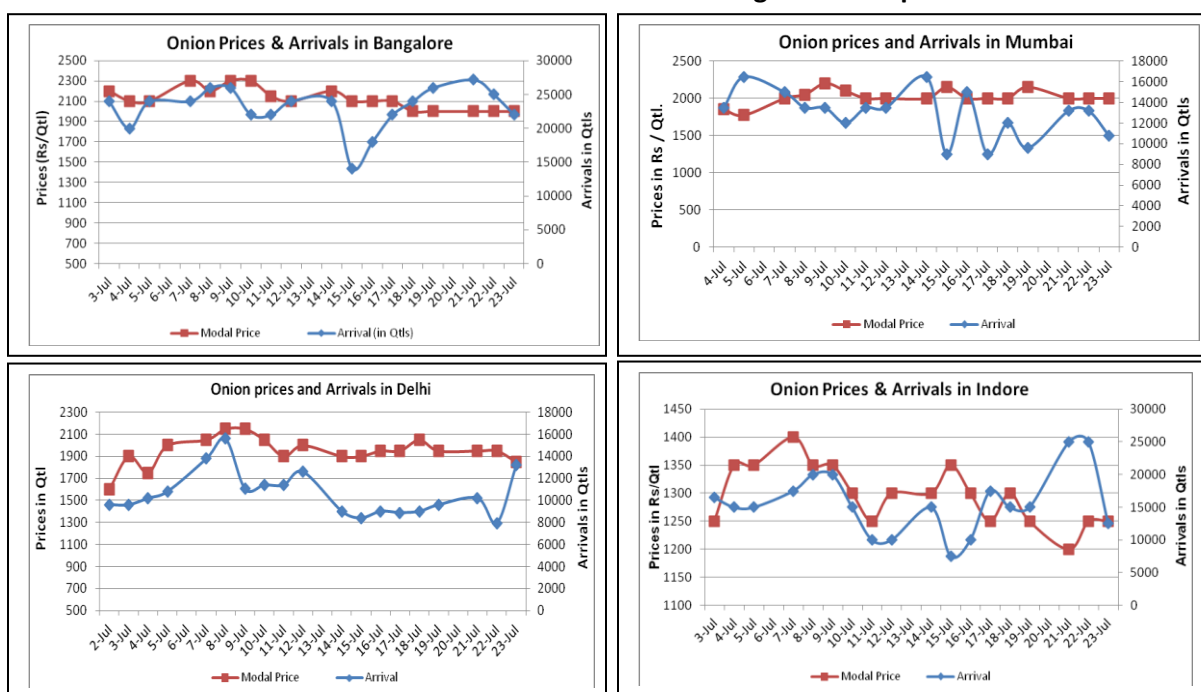


### Onion Fundamentals:

- Lower arrivals reported in Indore, Mumbai and Bangalore market due to heavy rainfall on Wednesday.
- In Delhi, as per consumer affairs data wholesale modal prices are hovering around Rs 1913/ quintal whereas retail prices are in the range of Rs 3400/ quintal.
- According to news sources, traders have started importing onion from Afghanistan. In coming days it is expected that 10-15 trucks may arrive every day.
- According to International Business Information System (IBIS), approximately 16018 tons of onion has exported till 13 July 2014 which includes both processed and unprocessed onion from sea route.
- In Karnataka, kharif sowing is in progress. So far approximately 19069 hectares of area is sown of the total targeted area for kharif onion is 1, 32,165 hectares.

### Onion wholesale Prices & Arrivals in Producing & Consumption Centers



(Source: AGRIWATCH)

Note : The above graph is made on data collected by Agriwatch through private sources because Agmarknet data are not consistent and lots of gaps in reporting.

### Onion Prices & Arrivals in Major Mandis as on 23.7.2014

Mandis	Nashik	Lasalgaon	Pimpalgaon	Niphad	Pune	Indore	Delhi	Bangalore
Price (Rs/Qtl)	1800-2100	1500-1900	1700-1850	800-1900	1700-2400	500-2000	1500-2200	1700-2300
Arrivals (Qtl)	800	9000	10000	12000	8000	12500	13200	22000

### Onion Prices & Arrivals in Major Mandis as on 22.7.2014

Mandis	Nashik	Lasalgaon	Pimpalgaon	Niphad	Pune	Indore	Delhi	Bangalore
Price (Rs/Qtl)	1500-2000	1700-2100	1700-1800	700-2000	2200-2600	500-2000	1500-2400	1600-2400
Arrivals (Qtl)	2400	9000	12500	24000	7500	25000	7920	25000

(Source: AGRIWATCH)

## Onion Prices in major markets – Wholesale vs. Retail as on 23 July 2014

ONION-Wholesale and Retail Prices		
Centre	Wholesale Prices (Rs./Qtl)	Retail Prices (Rs./Qtl)
	23-Jul-14	23-Jul-14
DELHI	1913	3400
LUCKNOW	2500	3000
AHMEDABAD	2600	2800
BHOPAL	1800	2200
MUMBAI	2200	2800
JAIPUR	1200	2000
BHUBANESHWAR	2400	2800
KOLKATA	2400	3200
HYDERABAD	2600	2800
BENGALURU	2900	3200
TRIVANDRUM	3200	3400
CHENNAI	2200	2700

(Source: Consumer Affairs)

**Disclaimer**

The information contained in this document has been compiled by Agriwatch from sources believed to be reliable, such as NHB, Agmarknet, etc. and directly from traders in mandis. However, users of this data are requested to use the information with due caution and crosscheck with other sources. This document is not, and should not be construed as an offer to sell or buy any commodities. This document may not be reproduced, distributed or published without the express consent of SFAC



**SFAC**  
लघु कृषक  
कृषि व्यापार संघ

Small Farmers'  
Agribusiness  
Consortium



**AGRIWATCH**