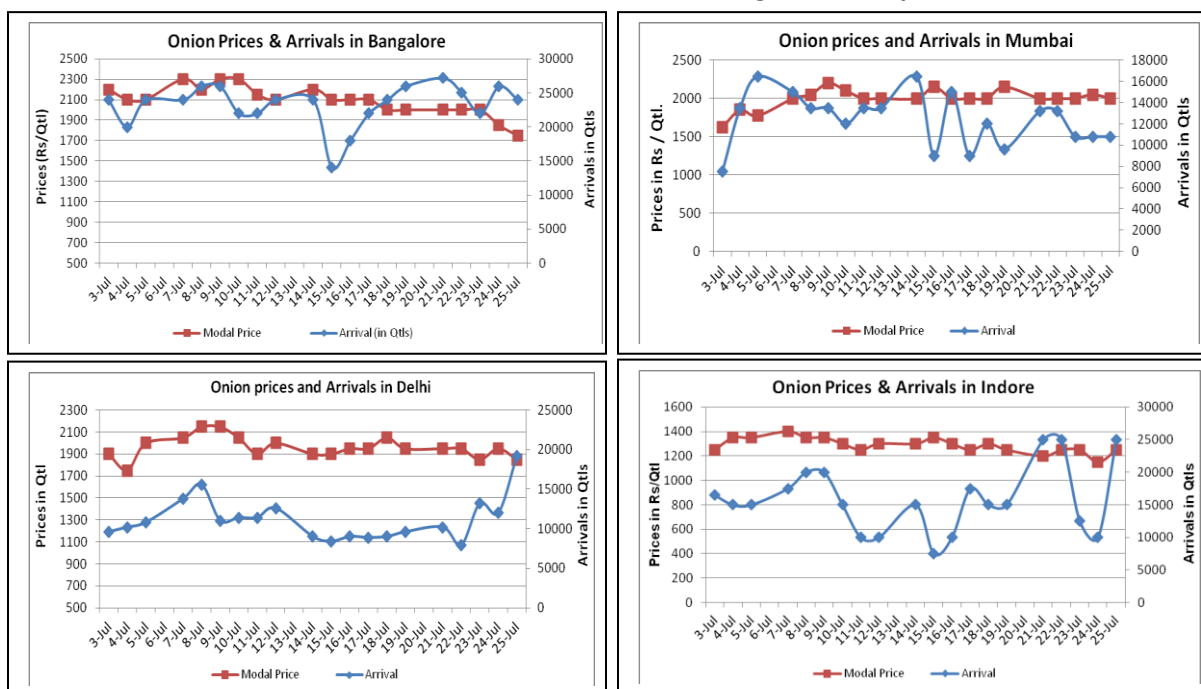


Onion Fundamentals:

- Onion prices were reported down in major domestic market on Friday.
- According to news sources, traders have started importing onion from Afghanistan. In coming days it is expected that 10-15 trucks may arrive every day.
- In Delhi, as per consumer affairs data wholesale modal prices are hovering around Rs 1800/ quintal whereas retail prices are in the range of Rs 3400/ quintal.
- According to International Business Information System (IBIS), approximately 21012 tons of onion has exported till 20 July 2014 which includes both processed and unprocessed onion from sea route.
- In Karnataka, kharif sowing is in progress. So far approximately 19069 hectares of area is sown of the total targeted area for kharif onion is 1, 32,165 hectares.

Onion wholesale Prices & Arrivals in Producing & Consumption Centers



(Source: AGRIWATCH)

Note : The above graph is made on data collected by Agriwatch through private sources because Agmarknet data are not consistent and lots of gaps in reporting.

Onion Prices & Arrivals in Major Mandis as on 25.7.2014

| Mandis | Nashik | Lasalgaon | Pimpalgaon | Niphad | Pune | Indore | Delhi | Bangalore |
|----------------|-----------|-----------|------------|--------|-----------|----------|-----------|-----------|
| Price (Rs/Qtl) | 1500-1800 | 1400-1900 | 1500-1600 | Closed | 2000-2500 | 500-2000 | 1500-2200 | 1500-2000 |
| Arrivals (Qtl) | 3000 | 9200 | 15000 | Closed | 8000 | 25000 | 19200 | 24000 |

Onion Prices & Arrivals in Major Mandis as on 24.7.2014

| Mandis | Nashik | Lasalgaon | Pimpalgaon | Niphad | Pune | Indore | Delhi | Bangalore |
|----------------|-----------|-----------|------------|----------|-----------|----------|-----------|-----------|
| Price (Rs/Qtl) | 1500-2000 | 1500-1900 | 1200-2250 | 700-1950 | 1600-2400 | 500-1800 | 1500-2400 | 1500-2200 |
| Arrivals (Qtl) | 3000 | 11000 | 11250 | 30000 | 7000 | 10000 | 12000 | 26000 |

(Source: AGRIWATCH)

Onion Prices in major markets – Wholesale vs. Retail as on 25 July 2014

| ONION-Wholesale and Retail Prices | | |
|-----------------------------------|----------------------------|-------------------------|
| Centre | Wholesale Prices (Rs./Qtl) | Retail Prices (Rs./Qtl) |
| | 25-Jul-14 | 25-Jul-14 |
| DELHI | 1800 | 3400 |
| LUCKNOW | NR | NR |
| AHMEDABAD | 2800 | 3000 |
| BHOPAL | 1800 | 2200 |
| MUMBAI | 2100 | 2700 |
| JAIPUR | 1300 | 2200 |
| BHUBANESHWAR | 2400 | 2800 |
| KOLKATA | 2400 | 3200 |
| HYDERABAD | 2600 | 2800 |
| BENGALURU | 2600 | 2800 |
| TRIVANDRUM | 3200 | 3400 |
| CHENNAI | 2300 | 3000 |

(Source: Consumer Affairs)

Disclaimer

The information contained in this document has been compiled by Agriwatch from sources believed to be reliable, such as NHB, Agmarknet, etc. and directly from traders in mandis. However, users of this data are requested to use the information with due caution and crosscheck with other sources. This document is not, and should not be construed as an offer to sell or buy any commodities. This document may not be reproduced, distributed or published without the express consent of SFAC