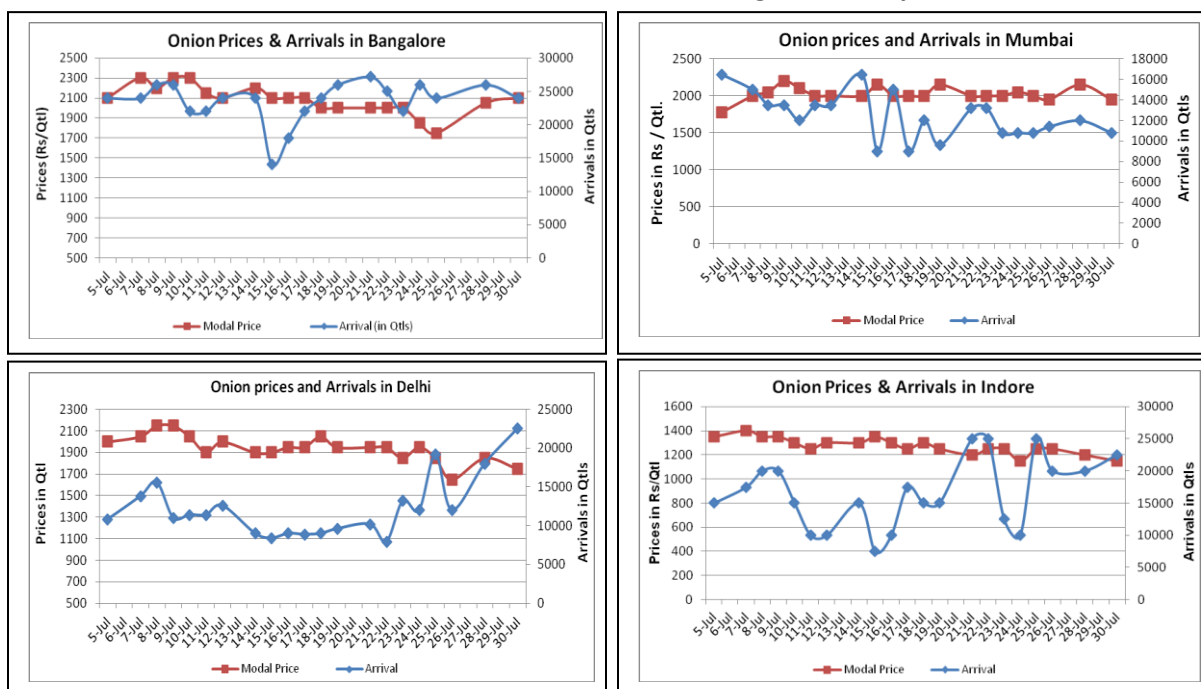


### Onion Fundamentals:

- Mostly Onion prices were reported up in major domestic market on Wednesday.
- In Karnataka, kharif sowing is in progress. So far approximately 43013 hectares of area is sown of the total targeted area for kharif onion is 1, 32,165 hectares.
- According to news sources, traders have started importing onion from Afghanistan. In coming days it is expected that 10-15 trucks may arrive every day.
- In Delhi, as per consumer affairs data wholesale modal prices are hovering around Rs 1938/ quintal whereas retail prices are in the range of Rs 3300/ quintal.
- According to International Business Information System (IBIS), approximately 21012 tons of onion has exported till 20 July 2014 which includes both processed and unprocessed onion from sea route.

### Onion wholesale Prices & Arrivals in Producing & Consumption Centers



(Source: AGRIWATCH)

Note : The above graph is made on data collected by Agriwatch through private sources because Agmarknet data are not consistent and lots of gaps in reporting.

### Onion Prices & Arrivals in Major Mandis as on 30.7.2014

Mandis	Nashik	Lasalgaon	Pimpalgaon	Niphad	Pune	Indore	Delhi	Bangalore
Price (Rs/Qtl)	1600-1800	1700-1900	1800-1900	500-2000	1500-2400	500-1800	1500-2000	2000-2200
Arrivals (Qtl)	1000	4000	7500	18000	6000	22500	22500	24000

### Onion Prices & Arrivals in Major Mandis as on 28.7.2014

Mandis	Nashik	Lasalgaon	Pimpalgaon	Niphad	Pune	Indore	Delhi	Bangalore
Price (Rs/Qtl)	1600-2000	1400-1900	1800-1900	700-2000	1400-2500	500-1900	1400-2300	1700-2400
Arrivals (Qtl)	3000	9000	11250	36000	7500	20000	18000	26000

(Source: AGRIWATCH)

Onion Prices in major markets – Wholesale vs. Retail as on 30 July 2014

ONION-Wholesale and Retail Prices		
Centre	Wholesale Prices (Rs./Qtl)	Retail Prices (Rs./Qtl)
	30-Jul-14	30-Jul-14
DELHI	1938	3300
LUCKNOW	2500	3000
AHMEDABAD	2800	3000
BHOPAL	1800	2200
MUMBAI	2100	2700
JAIPUR	1200	2200
BHUBANESHWAR	2400	2800
KOLKATA	2100	3000
HYDERABAD	2600	2800
BENGALURU	2600	2800
TRIVANDRUM	3600	3900
CHENNAI	2400	3200

(Source: Consumer Affairs)

### Disclaimer

The information contained in this document has been compiled by Agriwatch from sources believed to be reliable, such as NHB, Agmarknet, etc. and directly from traders in mandis. However, users of this data are requested to use the information with due caution and crosscheck with other sources. This document is not, and should not be construed as an offer to sell or buy any commodities. This document may not be reproduced, distributed or published without the express consent of SFAC



**SFAC**  
लघु कृषक  
कृषि व्यापार संघ

Small Farmers'  
Agribusiness  
Consortium



**AGRIWATCH**