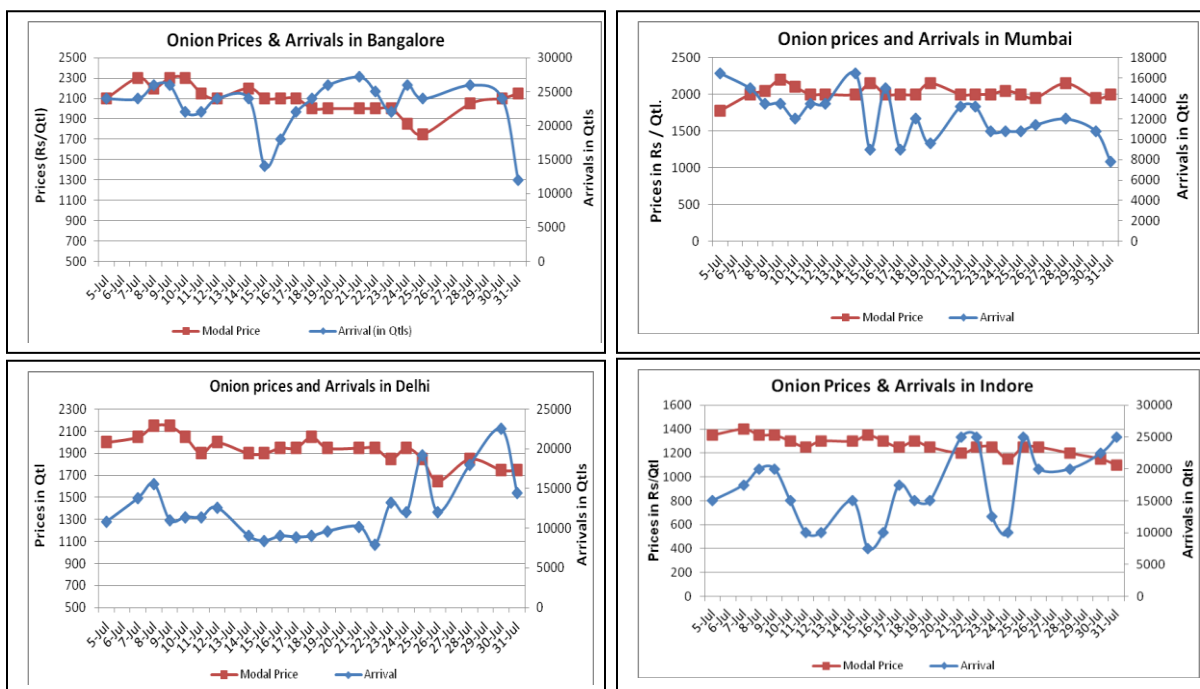


Onion Fundamentals:

- Mostly Onion arrivals were reported in major domestic market on Thursday.
- Onion export down due to higher MEP prices (\$ 500/ ton.) and quality issue.
- According to International Business Information System (IBIS), approximately 6248 tons of onion has exported 21 - 27 July (week period) 2014 which includes both processed and unprocessed onion from sea route.
- Sources revealed that, Onion prices likely to go down due to higher stocks available in the domestic market.
- In Karnataka, kharif sowing is in progress. So far approximately 43013 hectares of area is sown last year same period recorded 19326 hectares. Total targeted area for kharif onion is 1, 32,165 hectares.
- In Delhi, as per consumer affairs data wholesale modal prices are hovering around Rs 1938/ quintal whereas retail prices are in the range of Rs 3400/ quintal.

Onion wholesale Prices & Arrivals in Producing & Consumption Centers



(Source: AGRIWATCH)

Note : The above graph is made on data collected by Agriwatch through private sources because Agmarknet data are not consistent and lots of gaps in reporting.

Onion Prices & Arrivals in Major Mandis as on 31.7.2014

Mandis	Nashik	Lasalgaon	Pimpalgaon	Niphad	Pune	Indore	Delhi	Bangalore
Price (Rs/Qtl)	1500-1800	1600-1900	1600-1800	600-2000	1800-2400	500-1700	1200-2300	1800-2500
Arrivals (Qtl)	1200	5000	7500	36000	6000	25000	14400	12000

Onion Prices & Arrivals in Major Mandis as on 30.7.2014

Mandis	Nashik	Lasalgaon	Pimpalgaon	Niphad	Pune	Indore	Delhi	Bangalore
Price (Rs/Qtl)	1600-1800	1700-1900	1800-1900	500-2000	1500-2400	500-1800	1500-2000	2000-2200
Arrivals (Qtl)	1000	4000	7500	18000	6000	22500	22500	24000

(Source: AGRIWATCH)

Onion Prices in major markets – Wholesale vs. Retail as on 31 July 2014

ONION-Wholesale and Retail Prices		
Centre	Wholesale Prices (Rs./Qtl)	Retail Prices (Rs./Qtl)
	31-Jul-14	31-Jul-14
DELHI	1838	3400
LUCKNOW	NR	3000
AHMEDABAD	2800	3000
BHOPAL	2000	2200
MUMBAI	2150	2800
JAIPUR	1200	NR
BHUBANESHWAR	2400	2800
KOLKATA	2100	3200
HYDERABAD	2600	2800
BENGALURU	2600	3200
TRIVANDRUM	3600	3400
CHENNAI		2900

(Source: Consumer Affairs)

Disclaimer

The information contained in this document has been compiled by Agriwatch from sources believed to be reliable, such as NHB, Agmarknet, etc. and directly from traders in mandis. However, users of this data are requested to use the information with due caution and crosscheck with other sources. This document is not, and should not be construed as an offer to sell or buy any commodities. This document may not be reproduced, distributed or published without the express consent of SFAC



SFAC
लघु कृषक
कृषि व्यापार संघ

Small Farmers'
Agribusiness
Consortium



AGRIWATCH