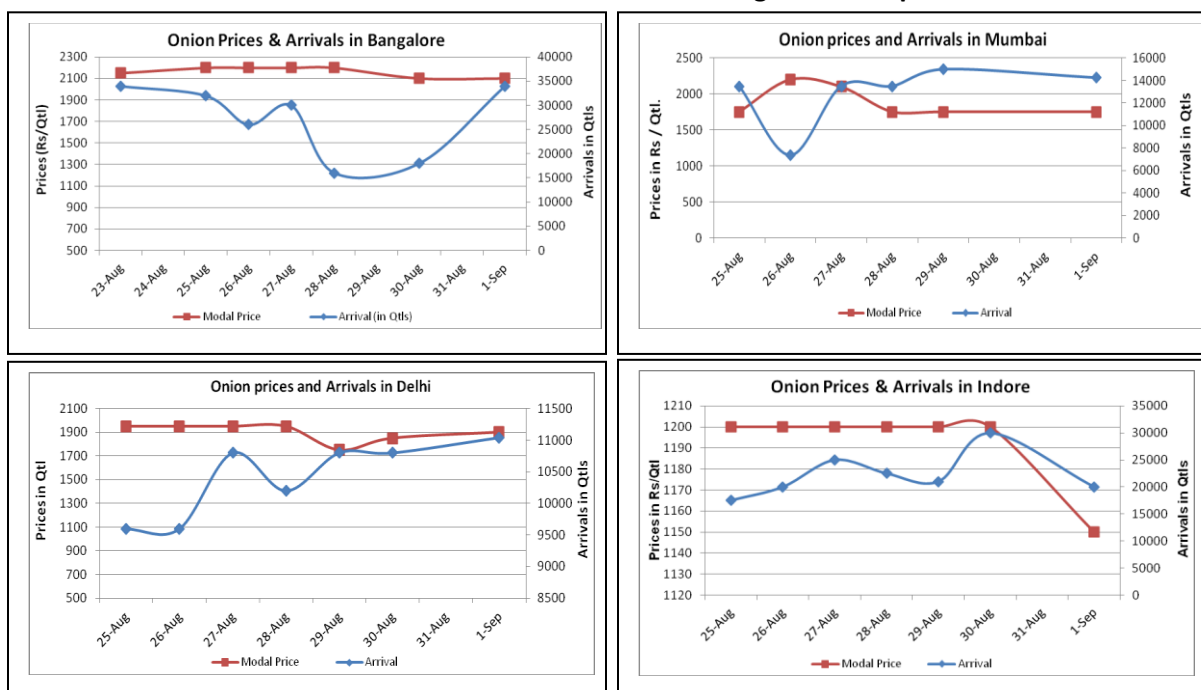


Onion Fundamentals:

- According to news sources government has imported approximately 400 tons from Egypt to keep the prices under control.
- In Delhi, wholesale prices are hovering in the range of Rs 1688/ quintal whereas as retail prices are approximately Rs 3100/ quintal.
- In Delhi, approximately 65% onion is arriving in market from Rajasthan whereas rest 35% is arriving in market from M.P and Maharashtra
- In Maharashtra, total targeted area for kharif is approximately 123623 hectares. Till 21st Aug, 30096 hectares of area is sown compared to last year's 42189 hectares of area during same time. Sowing is delayed due to delay in monsoon and rainfall deficit.

Onion wholesale Prices & Arrivals in Producing & Consumption Centers



(Source: AGRIWATCH)

Note: The above graph is made on data collected by Agriwatch through private sources because Agmarknet data are not consistent and lots of gaps in reporting.

Onion Prices & Arrivals in Major Mandis as on 1.Sept.2014

| Mandis | Nashik | Lasalgaon | Pimpalgaon | Niphad | Pune | Indore | Delhi | Bangalore |
|----------------|-----------|-----------|------------|----------|-----------|----------|-----------|-----------|
| Price (Rs/Qtl) | 1200-1700 | 1400-1800 | 1500-1800 | 300-1800 | 1500-2000 | 500-1800 | 1500-2300 | 1800-2400 |
| Arrivals (Qtl) | 1600 | 12000 | 20000 | 42000 | 12500 | 20000 | 11040 | 34000 |

Onion Prices & Arrivals in Major Mandis as on 30.Aug.2014

| Mandis | Nashik | Lasalgaon | Pimpalgaon | Niphad | Pune | Indore | Delhi | Bangalore |
|----------------|-----------|-----------|------------|----------|--------|----------|-----------|-----------|
| Price (Rs/Qtl) | 1200-1700 | Closed | Closed | 500-1800 | Closed | 500-1900 | 1500-2200 | 1800-2400 |
| Arrivals (Qtl) | 2000 | Closed | Closed | 48000 | Closed | 30000 | 10800 | 18000 |

(Source: AGRIWATCH)

Onion Prices in major markets – Wholesale vs. Retail as on 1 Sept 2014

| ONION-Wholesale and Retail Prices | | |
|-----------------------------------|----------------------------|-------------------------|
| Centre | Wholesale Prices (Rs./Qtl) | Retail Prices (Rs./Qtl) |
| | 1-Sept-14 | 1-Sept-14 |
| DELHI | 1663 | 3000 |
| LUCKNOW | 2000 | 2500 |
| AHMEDABAD | 1800 | 2100 |
| BHOPAL | 1400 | 1600 |
| MUMBAI | 1950 | 3200 |
| JAIPUR | 1300 | 2300 |
| BHUBANESHWAR | 2100 | 2500 |
| KOLKATA | 2100 | 2500 |
| HYDERABAD | 2600 | 2800 |
| BENGALURU | NR | NR |
| TRIVANDRUM | 3500 | 3700 |
| CHENNAI | 2000 | 2600 |

(Source: Consumer Affairs)

Disclaimer

The information contained in this document has been compiled by Agriwatch from sources believed to be reliable, such as NHB, Agmarknet, etc. and directly from traders in mandis. However, users of this data are requested to use the information with due caution and crosscheck with other sources. This document is not, and should not be construed as an offer to sell or buy any commodities. This document may not be reproduced, distributed or published without the express consent of SFAC