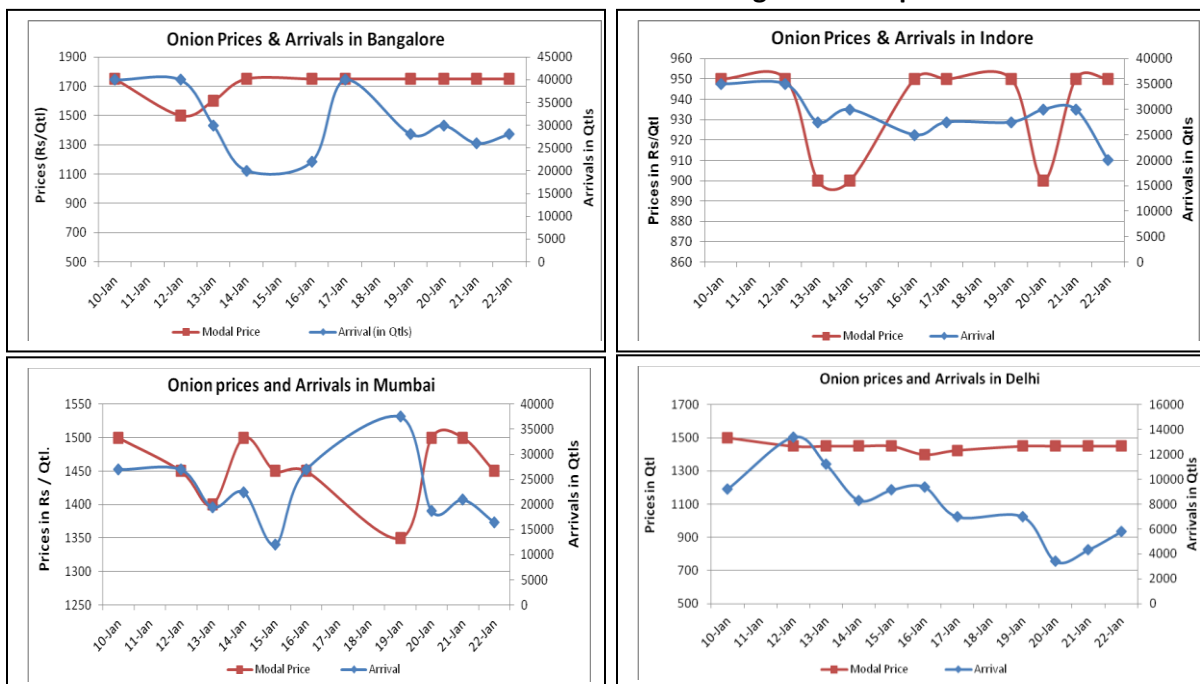


Onion Fundamentals:

- Steady to weak sentiment witnessed in major Onion domestic market on Thursday.
- In Bangalore, lower onion arrival reported due to occasion of Makar sakranti as 60% of total crop arriving in market comes from local region.
- In Delhi, wholesale prices are Rs 1350/ quintal higher prices reported due to lower arrivals. Bad weather in MP regions reason for lower supply in Delhi market.
- As per IBIS around 22368 tons of processed and fresh onion has been exported during 12th Jan – 18th Jan 2015.
- All India Rabi sowing is estimated to be 10-15% less compared to previous year. Maximum fall in acreage could be seen in Maharashtra due to less water.

Onion wholesale Prices & Arrivals in Producing & Consumption Centers



(Source: AGRWATCH)

Note: The above graph is made on data collected by Agriwatch through private sources because Agmarknet data are not consistent and lots of gaps in reporting.

Onion Prices & Arrivals in Major Mandis as on 22.Jan.2015

Mandis	Nashik	Lasalgaon	Pimpalgaon	Niphad	Pune	Indore	Delhi	Bangalore
Price (Rs/Qtl)	1000-1300	1100-1400	1100-1500	500-1250	1300-1800	500-1400	1000-1900	1500-2000
Arrivals (Qtl)	1600	24000	22500	36000	10000	20000	5800	28000

Onion Prices & Arrivals in Major Mandis as on 21.Jan.2015

Mandis	Nashik	Lasalgaon	Pimpalgaon	Niphad	Pune	Indore	Delhi	Bangalore
Price (Rs/Qtl)	900-1250	1100-1400	1100-1500	400-1270	1400-1900	500-1400	1000-1900	1500-2000
Arrivals (Qtl)	2000	27000	17500	36000	10000	30000	4340	26000

(Source: AGRWATCH)

Onion Prices in major markets – Wholesale vs. Retail as on 22 Jan 2015

ONION-Wholesale and Retail Prices		
Centre	Wholesale Prices (Rs./Qtl)	Retail Prices (Rs./Qtl)
	22-Jan-15	22-Jan-15
DELHI	1350	3000
LUCKNOW	1600	2000
AHMEDABAD	1800	2000
BHOPAL	1200	1300
MUMBAI	1300	2800
JAIPUR	1000	1500
BHUBANESHWAR	1700	2000
KOLKATA	1800	2500
HYDERABAD	2400	2500
BENGALURU	2000	2200
TRIVANDRUM*	3500	3700
CHENNAI#	1200	1900

*Small variety, # larger variety

(Source: Consumer Affairs)

Disclaimer

The information contained in this document has been compiled by Agriwatch from sources believed to be reliable, such as NHB, Agmarknet, etc. and directly from traders in mandis. However, users of this data are requested to use the information with due caution and crosscheck with other sources. This document is not, and should not be construed as an offer to sell or buy any commodities. This document may not be reproduced, distributed or published without the express consent of SFAC