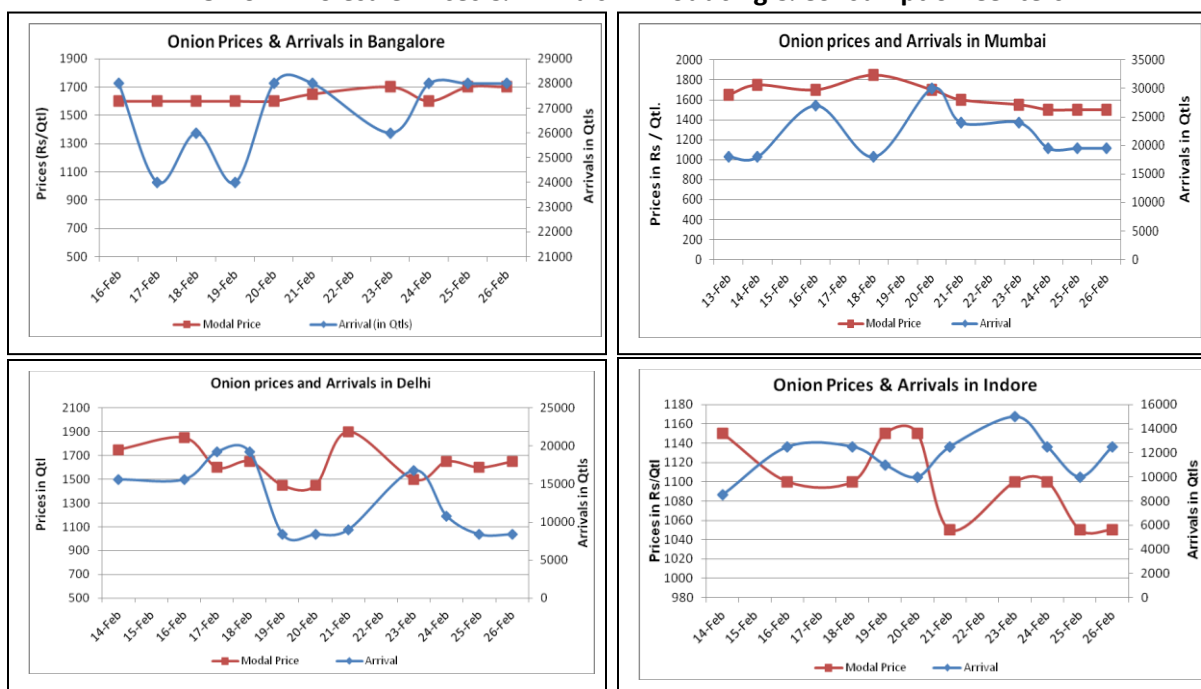


Onion Fundamentals:

- Late kharif production in Maharashtra is less as compared to previous year due to less acreage (down by 14%) and further lower yield. Late kharif onion comes in the market till mid of March and after this rabi onion starts coming.
- In M.P, onion is arriving in market from local region and Maharashtra which are contributing approximately 60% and 40% respectively.
- In Delhi, onion is arriving in market from Rajasthan, Haryana, Gujarat and smaller quantity from Maharashtra. Less quantity is coming from these producing regions to Delhi.
- In Delhi, onion wholesale prices are trading around Rs 1463/ quintal whereas retail prices are Rs 3300/ quintal.

Onion wholesale Prices & Arrivals in Producing & Consumption Centers



(Source: AGRIWATCH)

Note: The above graph is made on data collected by Agriwatch through private sources because Agmarknet data are not consistent and lots of gaps in reporting.

Onion Prices & Arrivals in Major Mandis as on 26.Feb.2015

Mandis	Nashik	Lasalgaon	Pimpalgaon	Niphad	Pune	Indore	Delhi	Bangalore
Price (Rs/Qtl)	1100-1400	1200-1400	1100-1300	500-1400	1300-1600	500-1600	1300-2000	1500-1900
Arrivals (Qtl)	2000	22000	20000	60000	22500	12500	8400	28000

Onion Prices & Arrivals in Major Mandis as on 25.Feb.2015

Mandis	Nashik	Lasalgaon	Pimpalgaon	Niphad	Pune	Indore	Delhi	Bangalore
Price (Rs/Qtl)	1200-1500	1200-1400	1100-1350	500-1300	1500-1700	500-1600	1200-2000	1500-1900
Arrivals (Qtl)	2000	28000	21250	60000	10000	10000	8400	28000

(Source: AGRIWATCH)

Onion Prices in major markets – Wholesale vs. Retail as on 26 Feb 2015

ONION-Wholesale and Retail Prices		
Centre	Wholesale Prices (Rs./Qtl)	Retail Prices (Rs./Qtl)
	26-Feb-15	26-Feb-15
DELHI	1463	3300
LUCKNOW	1600	1800
AHMEDABAD	2000	2200
BHOPAL	NR	NR
MUMBAI	1500	2700
JAIPUR	800	2000
BHUBANESHWAR	2000	2400
KOLKATA	1500	2200
HYDERABAD	2400	2600
BENGALURU	2300	2500
TRIVANDRUM*	3500	3700
CHENNAI#	1600	2000

*Small variety, # larger variety

(Source: Consumer Affairs)

Disclaimer

The information contained in this document has been compiled by Agriwatch from sources believed to be reliable, such as NHB, Agmarknet, etc. and directly from traders in mandis. However, users of this data are requested to use the information with due caution and crosscheck with other sources. This document is not, and should not be construed as an offer to sell or buy any commodities. This document may not be reproduced, distributed or published without the express consent of SFAC