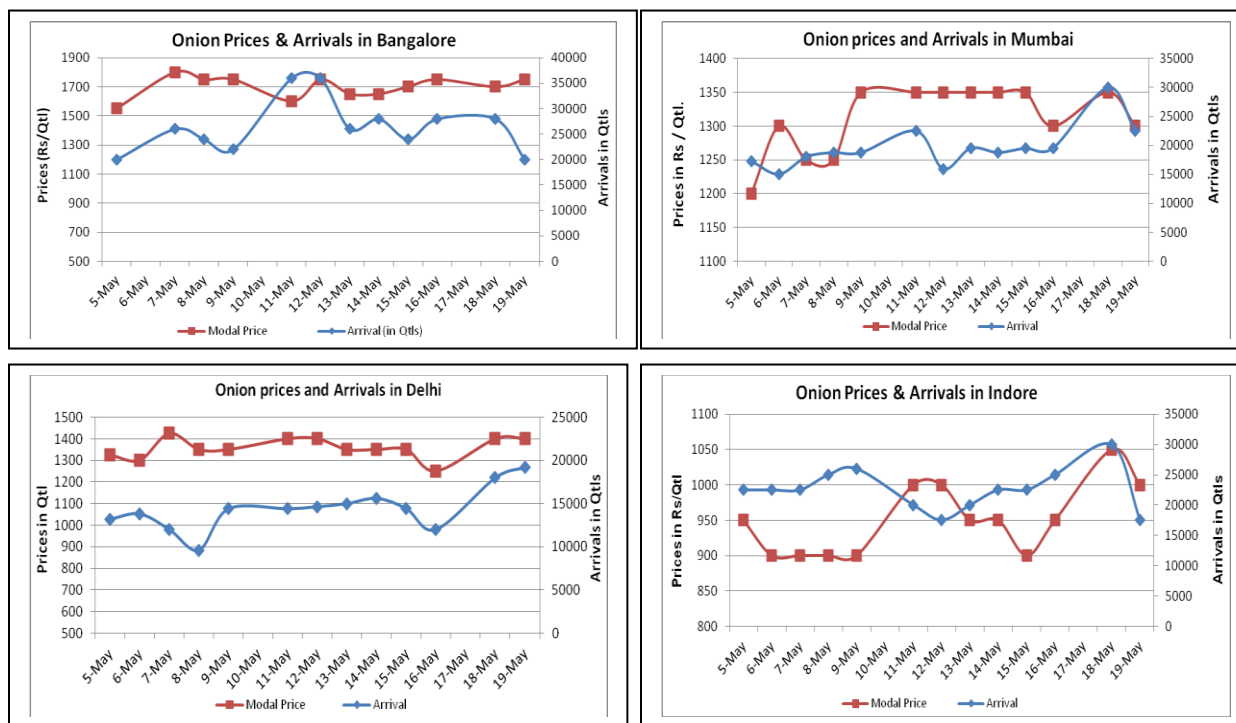


Onion Fundamentals:

- Lower supply reported in the major domestic market on Tuesday.
- This year, rabi onion production is expected to be similar to last year. Last year total rabi onion production in our estimate was between 95-100 lakh tons.
- Prices have started firming up as harvesting of rabi onion is getting over and stored onion will fetch higher prices from June month.
- Prices were increased in the range of Rs. 50-100/Qtl and arrivals also increased in Indore, Mumbai and Delhi following rise in prices.
- As per IBIS (International Business Information Services) around 21264 tons of processed and fresh onion has been exported during 27th April – 3rd May compared to previous week export of 21464 tons during 20th April- 26th April 2015.

Onion wholesale Prices & Arrivals in Producing & Consumption Centers



(Source: AGRIWATCH)

Note: The above graph is made on data collected by Agriwatch through private sources because Agmarknet data are not consistent and lots of gaps in reporting.

Onion Prices & Arrivals in Major Mandis as on 19.May.2015

Mandis	Nashik	Lasalgaon	Pimpalgaon	Niphad	Pune	Indore	Delhi	Bangalore
Price (Rs/Qtl)	500-1300	900-1400	1200-1600	500-1500	900-1800	500-1500	1200-1600	1500-2000
Arrivals (Qtl)	1200	13000	25000	30000	18000	17500	19200	20000

Onion Prices & Arrivals in Major Mandis as on 18.May.2015

Mandis	Nashik	Lasalgaon	Pimpalgaon	Niphad	Pune	Indore	Delhi	Bangalore
Price (Rs/Qtl)	500-1300	Closed	Closed	Closed	900-1800	500-1600	1200-1600	1500-1900
Arrivals (Qtl)	1300	Closed	Closed	Closed	10000	30000	18000	28000

(Source: AGRIWATCH)

Onion Prices in major markets – Wholesale vs. Retail as on 19 May 2015

ONION-Wholesale and Retail Prices		
Centre	Wholesale Prices (Rs./Qtl)	Retail Prices (Rs./Qtl)
	19-May-15	19-May-15
DELHI	1038	2900
LUCKNOW	1600	2000
AHMEDABAD	1430	1700
BHOPAL	900	1000
MUMBAI	1550	2300
JAIPUR	600	1500
BHUBANESHWAR	1550	2000
KOLKATA	1700	2500
HYDERABAD	2000	2200
BENGALURU	2000	2300
TRIVANDRUM*	2900	3100
CHENNAI#	1200	1500

*Small variety, # larger variety

(Source: Consumer Affairs)

Disclaimer

The information contained in this document has been compiled by Agriwatch from sources believed to be reliable, such as NHB, Agmarknet, etc. and directly from traders in mandis. However, users of this data are requested to use the information with due caution and crosscheck with other sources. This document is not, and should not be construed as an offer to sell or buy any commodities. This document may not be reproduced, distributed or published without the express consent of SFAC



SFAC
लघु कृषक
कृषि व्यापार संघ

Small Farmers'
Agribusiness
Consortium



AGRIWATCH