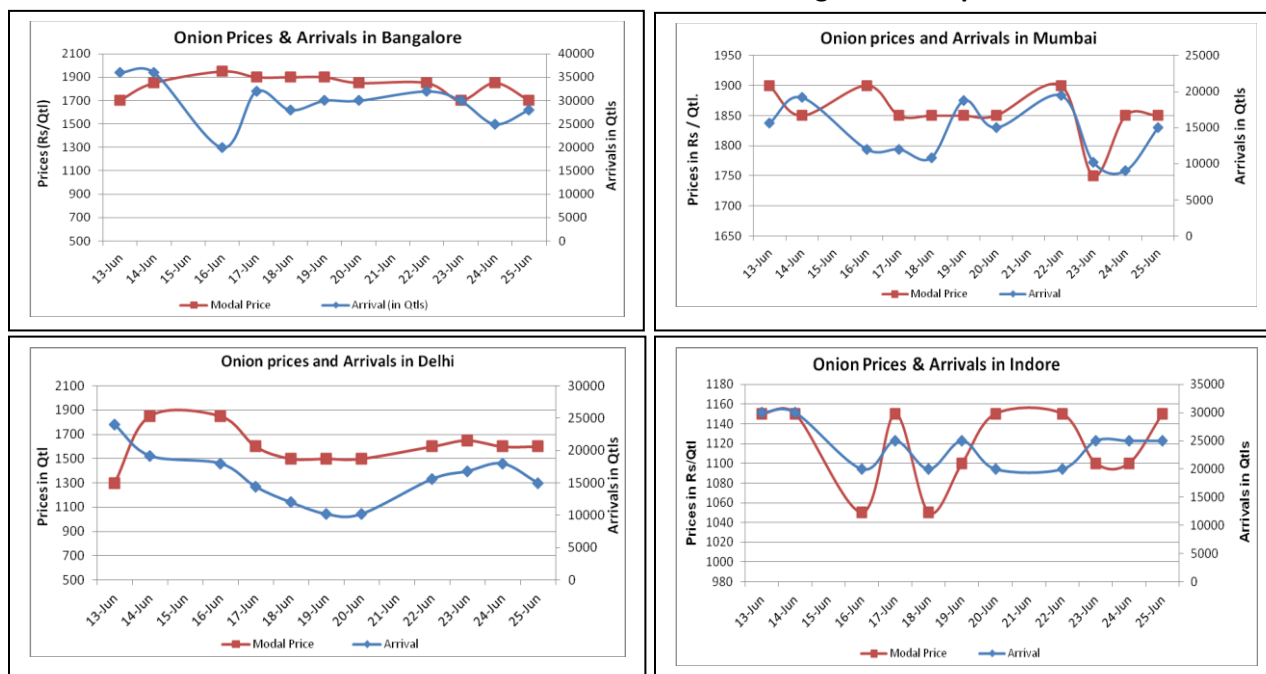


## Onion Fundamentals:

- In Karnataka, kharif sowing is in progress. So far 17807 hectares of area is sown from a targeted area of 120240 hectares. Maximum sowing is done in Dharwad district so far.
- In A.P, kharif sowing is in progress and Kurnool district contribute approximately 30% to total production in State. So far 10600 hectares of area is sown in Kurnool district.
- In Delhi, modal onion prices are Rs 1600/ quintal compared to previous year price of Rs 1353/ quintal. Prices are higher this year due to crop loss in major producing regions.
- NAFED has procured around 1100 tons of onion from Lasalgaon and Pimpalgaon APMC to stabilize onion prices in domestic market under Price Stabilization Fund (PSF) by central Government.

## Onion wholesale Prices & Arrivals in Producing & Consumption Centers



Source: AGRIWATCH)

Note: The above graph is made on data collected by Agriwatch through private sources because Agmarknet data are not consistent and lots of gaps in reporting.

## Onion Prices & Arrivals in Major Mandis as on 25.June.2015

Mandis	Nashik	Lasalgaon	Pimpalgaon	Niphad	Pune	Indore	Delhi	Bangalore
Price (Rs/Qtl)	1200-1900	1400-1800	1700-1800	700-1600	1600-2200	500-1800	1200-2000	1400-2000
Arrivals (Qtl)	200	9000	12500	18000	7500	25000	15000	28000

## Onion Prices & Arrivals in Major Mandis as on 24.June.2015

Mandis	Nashik	Lasalgaon	Pimpalgaon	Niphad	Pune	Indore	Delhi	Bangalore
Price (Rs/Qtl)	1200-1900	1400-1900	1500-1800	500-1800	1500-2200	NR	1200-2000	1500-2200
Arrivals (Qtl)	150	9000	10000	18000	10500	NR	18000	25000

(Source: AGRIWATCH)

## Onion Prices in major markets – Wholesale vs. Retail as on 25 June 2015

ONION-Wholesale and Retail Prices		
Centre	Wholesale Prices (Rs./Qtl)	Retail Prices (Rs./Qtl)
	25-June-15	25-June-15
DELHI	1313	3400
LUCKNOW	1600	2000
AHMEDABAD	2500	2800
BHOPAL	1700	2000
MUMBAI	1950	2700
JAIPUR	700	1600
BHUBANESHWAR	2200	2600
KOLKATA	1900	3000
HYDERABAD	2300	2500
BENGALURU	2500	2700
TRIVANDRUM*	3000	3200
CHENNAI#	2500	2900

\*Small variety, # larger variety

(Source: Consumer Affairs)

## Disclaimer

The information contained in this document has been compiled by Agriwatch from sources believed to be reliable, such as NHB, Agmarknet, etc. and directly from traders in mandis. However, users of this data are requested to use the information with due caution and crosscheck with other sources. This document is not, and should not be construed as an offer to sell or buy any commodities. This document may not be reproduced, distributed or published without the express consent of SFAC