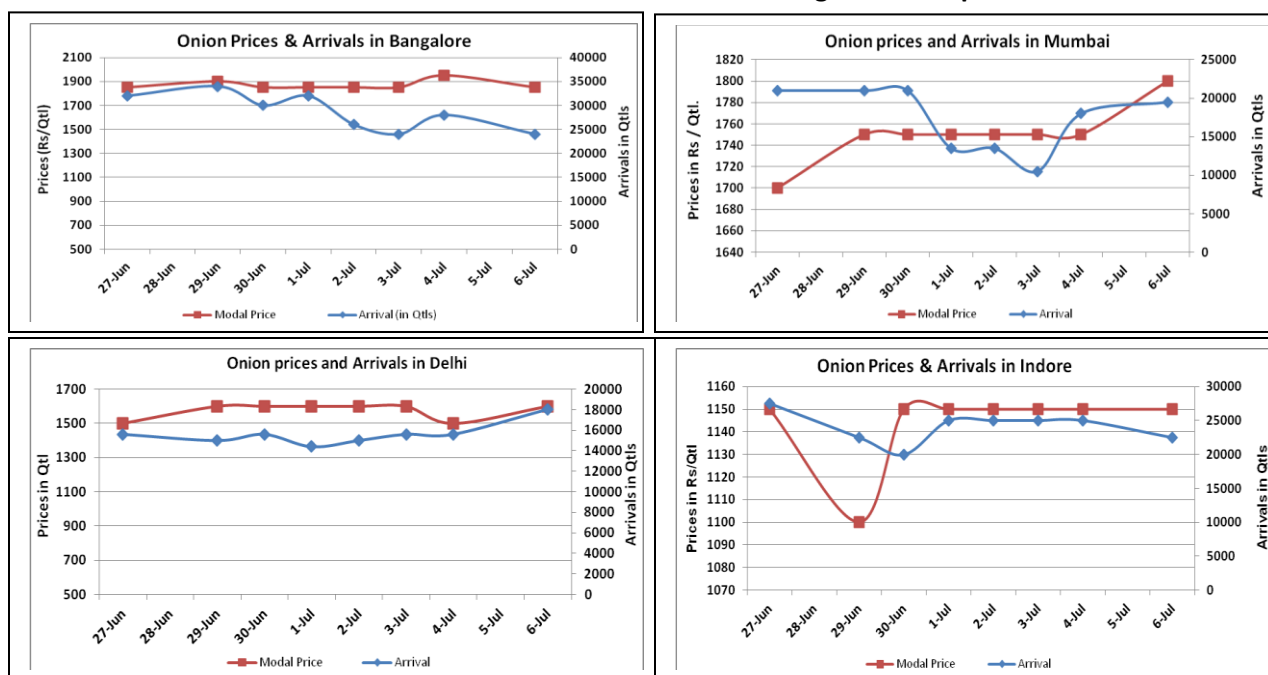


Onion Fundamentals:

- Mixed sentiment witnessed in Onion market on Monday.
- In Karnataka, kharif sowing is in progress. So far 36325 hectares of area is sown from a targeted area of 120240 hectares. Maximum sowing is done in Dharwad district so far.
- Government has increased Minimum Export Price (MEP) to \$425/ ton from \$250/ ton to discourage export and increase domestic availability.
- In A.P, kharif sowing is in progress and so far 1788 hectares of area is sown from a total targeted area of 25794 hectares.
- In A.P, Kurnool district contribute approximately 70% to total production in State. So far 1478 hectares of area is sown from a total targeted area of 18681 hectares.

Onion wholesale Prices & Arrivals in Producing & Consumption Centers



Source: AGRIWATCH

Note: The above graph is made on data collected by Agriwatch through private sources because Agmarknet data are not consistent and lots of gaps in reporting.

Onion Prices & Arrivals in Major Mandis as on 6.July.2015

Mandis	Nashik	Lasalgaon	Pimpalgaon	Niphad	Pune	Indore	Delhi	Bangalore
Price (Rs/Qtl)	1500-1800	1200-1800	1200-1800	500-1800	1600-2100	500-1800	1200-2000	1500-2200
Arrivals (Qtl)	1200	8000	11250	18000	15000	22500	18000	24000

Onion Prices & Arrivals in Major Mandis as on 4.July.2015

Mandis	Nashik	Lasalgaon	Pimpalgaon	Niphad	Pune	Indore	Delhi	Bangalore
Price (Rs/Qtl)	1400-1800	Closed	Closed	500-1700	Closed	500-1800	1100-1900	1500-2400
Arrivals (Qtl)	800	Closed	Closed	19200	Closed	25000	15600	28000

(Source: AGRIWATCH)

Onion Prices in major markets – Wholesale vs. Retail as on 6 July 2015

ONION-Wholesale and Retail Prices		
Centre	Wholesale Prices (Rs./Qtl)	Retail Prices (Rs./Qtl)
	6-July-15	6-July-15
DELHI	1250	3700
LUCKNOW	2200	3000
AHMEDABAD	2700	3000
BHOPAL	1800	2000
MUMBAI	1750	2500
JAIPUR	1000	1700
BHUBANESHWAR	2050	2500
KOLKATA	1900	3000
HYDERABAD	2300	2500
BENGALURU	2800	3000
TRIVANDRUM*	3000	3200
CHENNAI#	2400	2900

*Small variety, # larger variety

(Source: Consumer Affairs)

Disclaimer

The information contained in this document has been compiled by Agriwatch from sources believed to be reliable, such as NHB, Agmarknet, etc. and directly from traders in mandis. However, users of this data are requested to use the information with due caution and crosscheck with other sources. This document is not, and should not be construed as an offer to sell or buy any commodities. This document may not be reproduced, distributed or published without the express consent of SFAC



SFAC
लघु कृषक
कृषि व्यापार संघ

Small Farmers'
Agribusiness
Consortium



AGRIWATCH