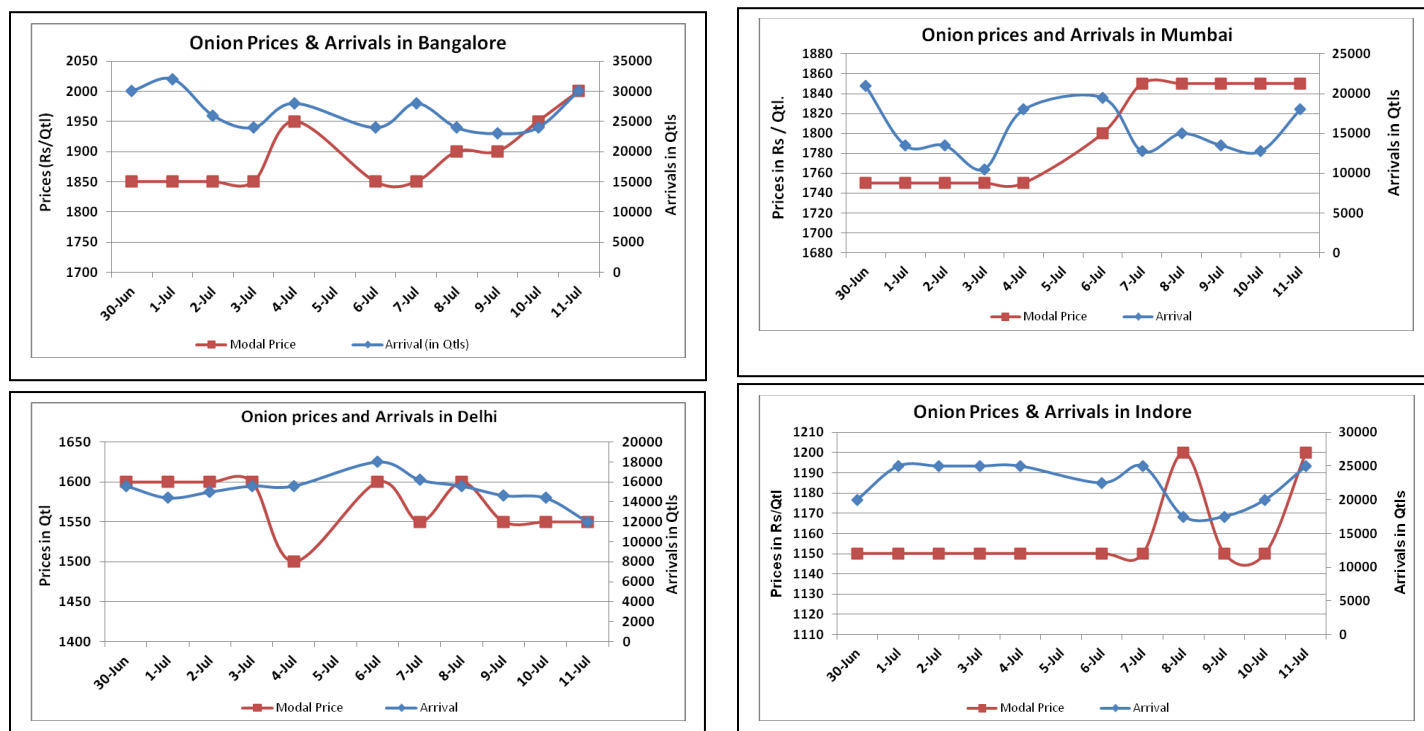


Onion Fundamentals:

- In Delhi, modal wholesale prices are trading in a range of Rs 1438/quintal whereas retail prices are in the range of Rs 3600/ quintal.
- In Mumbai, supply is not at same pace due to rainfall which acts as a constraint.
- In Andhra Pradesh, Kharif sowing is in progress, till 08-07-2015, 4825 hectares Onion sown as compared to last year same period 5216 hectares and Kurnool district contribute approximately 30% to total production in State. So far 4612 hectares of area is sown in Kurnool district.
- In Karnataka, kharif sowing is in progress. As on 29.06.2015 41807 hectares of area is sown from a targeted area of 120240 hectares. Maximum sowing is done in Dharwad district so far 29740 hectares.

Onion wholesale Prices & Arrivals in Producing & Consumption Centers



(Source: AGRIWATCH)

Note: The above graph is made on data collected by Agriwatch through private sources because Agmarknet data are not consistent and lots of gaps in reporting.

Onion Prices & Arrivals in Major Mandis as on 11.July.2015

Mandis	Nashik	Lasalgaon	Pimpalgaon	Niphad	Pune	Indore	Delhi	Bangalore
Price (Rs/Qtl)	1500-1750	Closed	Closed	800-2000	Closed	500-1900	1200-1900	1600-2400
Arrivals (Qtl)	700	Closed	Closed	18000	Closed	25000	12000	30000

Onion Prices & Arrivals in Major Mandis as on 10.July.2015

Mandis	Nashik	Lasalgaon	Pimpalgaon	Niphad	Pune	Indore	Delhi	Bangalore
Price (Rs/Qtl)	1500-1700	1300-1900	1300-2000	Closed	1600-2300	500-1800	1200-1900	1500-2400
Arrivals (Qtl)	900	11000	8750	Closed	7500	20000	14400	24000

(Source: AGRIWATCH)

Onion Prices in major markets – Wholesale vs. Retail as on 10 July 2015

ONION-Wholesale and Retail Prices		
Centre	Wholesale Prices (Rs./Qtl)	Retail Prices (Rs./Qtl)
	10-July-15	10-July-15
DELHI	1438	3600
LUCKNOW	2200	3000
AHMEDABAD	2700	3000
BHOPAL	1800	2000
MUMBAI	1800	2600
JAIPUR	1000	1700
BHUBANESHWAR	2200	2600
KOLKATA	1900	3000
HYDERABAD	2400	2500
BENGALURU	NR	NR
TRIVANDRUM*	4000	4300
CHENNAI#	2500	3100

*Small variety, # larger variety

(Source: Consumer Affairs)

Disclaimer

The information contained in this document has been compiled by Agriwatch from sources believed to be reliable, such as NHB, Agmarknet, etc. and directly from traders in mandis. However, users of this data are requested to use the information with due caution and crosscheck with other sources. This document is not, and should not be construed as an offer to sell or buy any commodities. This document may not be reproduced, distributed or published without the express consent of SFAC