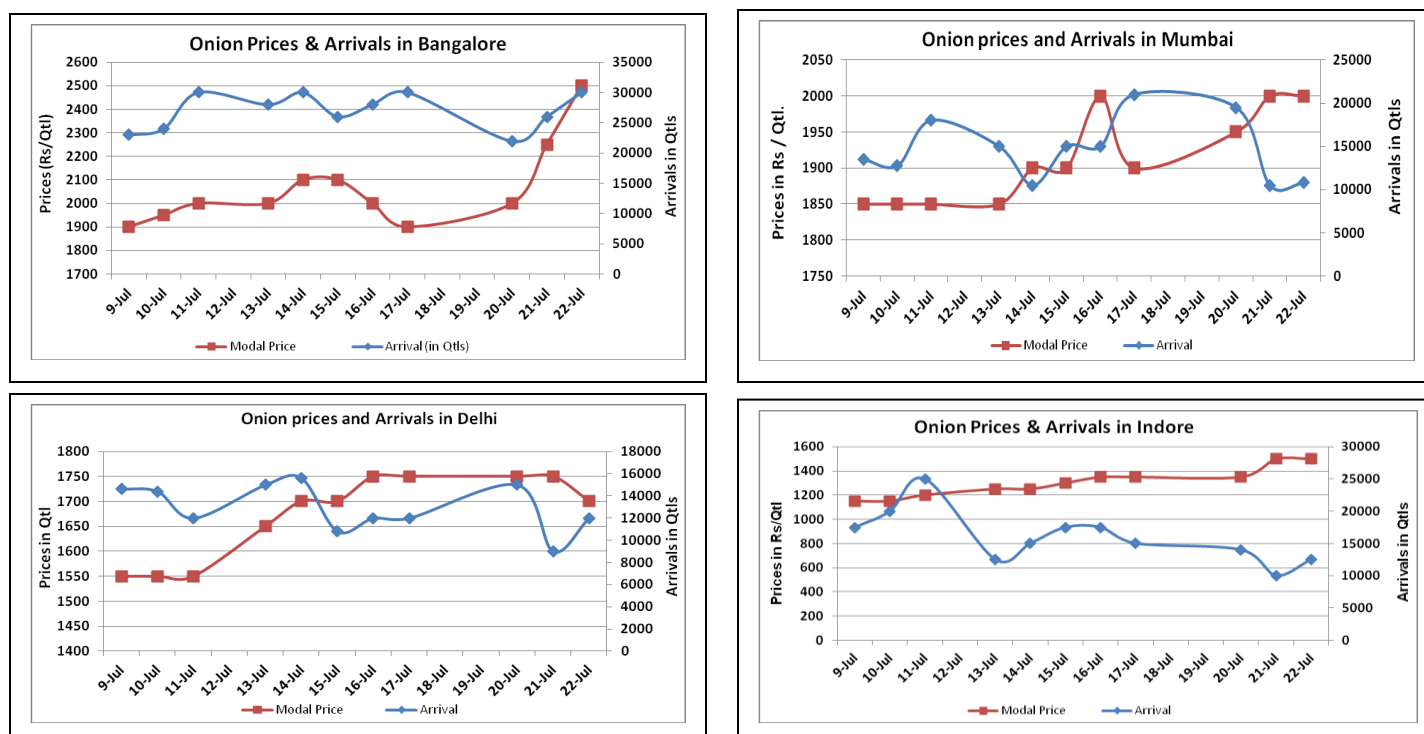


Onion Fundamentals:

- Across the country prices are increasing because of lower arrival of onion in market and expectation of lower kharif area in major producing regions. So pace of release is slower down.
- In Delhi, modal onion prices are expected to be in the range of Rs 1650 to Rs 1750/ quintal due to slow release of onion in expectation of higher prices ahead.
- In Karnataka, kharif sowing is in progress. So far approximately 56266 hectares of area is sown compared to last year's 36663 hectares.
- In Andhra Pradesh, so far 8887 hectares of area is sown compared to last year area of 13117 hectares. Kurnool district contribute approximately 70% to total production in State.

Onion wholesale Prices & Arrivals in Producing & Consumption Centers



(Source: AGRIWATCH)

Note: The above graph is made on data collected by Agriwatch through private sources because Agmarknet data are not consistent and lots of gaps in reporting.

Onion Prices & Arrivals in Major Mandis as on 21.July.2015

Mandis	Nashik	Lasalgaon	Pimpalgaon	Niphad	Pune	Indore	Delhi	Bangalore
Price (Rs/Qtl)	2300-2600	1500-2955	2400-2700	1400-2800	2500-3000	500-2500	1200-2200	2000-3000
Arrivals (Qtl)	400	7000	17500	15600	12000	12500	12000	30000

Onion Prices & Arrivals in Major Mandis as on 20.July.2015

Mandis	Nashik	Lasalgaon	Pimpalgaon	Niphad	Pune	Indore	Delhi	Bangalore
Price (Rs/Qtl)	2400-2700	2100-2500	1900-2600	1300-2700	2000-2700	500-2500	1300-2200	1600-2900
Arrivals (Qtl)	500	7000	8750	15600	12000	5000	9000	26000

(Source: AGRIWATCH)

Onion Prices in major markets – Wholesale vs. Retail as on 22 July 2015

ONION-Wholesale and Retail Prices		
Centre	Wholesale Prices (Rs./Qtl)	Retail Prices (Rs./Qtl)
	22-July-15	22-July-15
DELHI	1713	3800
LUCKNOW	2200	3000
AHMEDABAD	2700	3000
BHOPAL	2000	2200
MUMBAI	1950	2700
JAIPUR	1000	1700
BHUBANESHWAR	2600	3000
KOLKATA	2300	3400
HYDERABAD	2400	2600
BENGALURU	2600	2800
TRIVANDRUM*	5300	5600
CHENNAI#	2400	2900

*Small variety, # larger variety

(Source: Consumer Affairs)

Disclaimer

The information contained in this document has been compiled by Agriwatch from sources believed to be reliable, such as NHB, Agmarknet, etc. and directly from traders in mandis. However, users of this data are requested to use the information with due caution and crosscheck with other sources. This document is not, and should not be construed as an offer to sell or buy any commodities. This document may not be reproduced, distributed or published without the express consent of SFAC