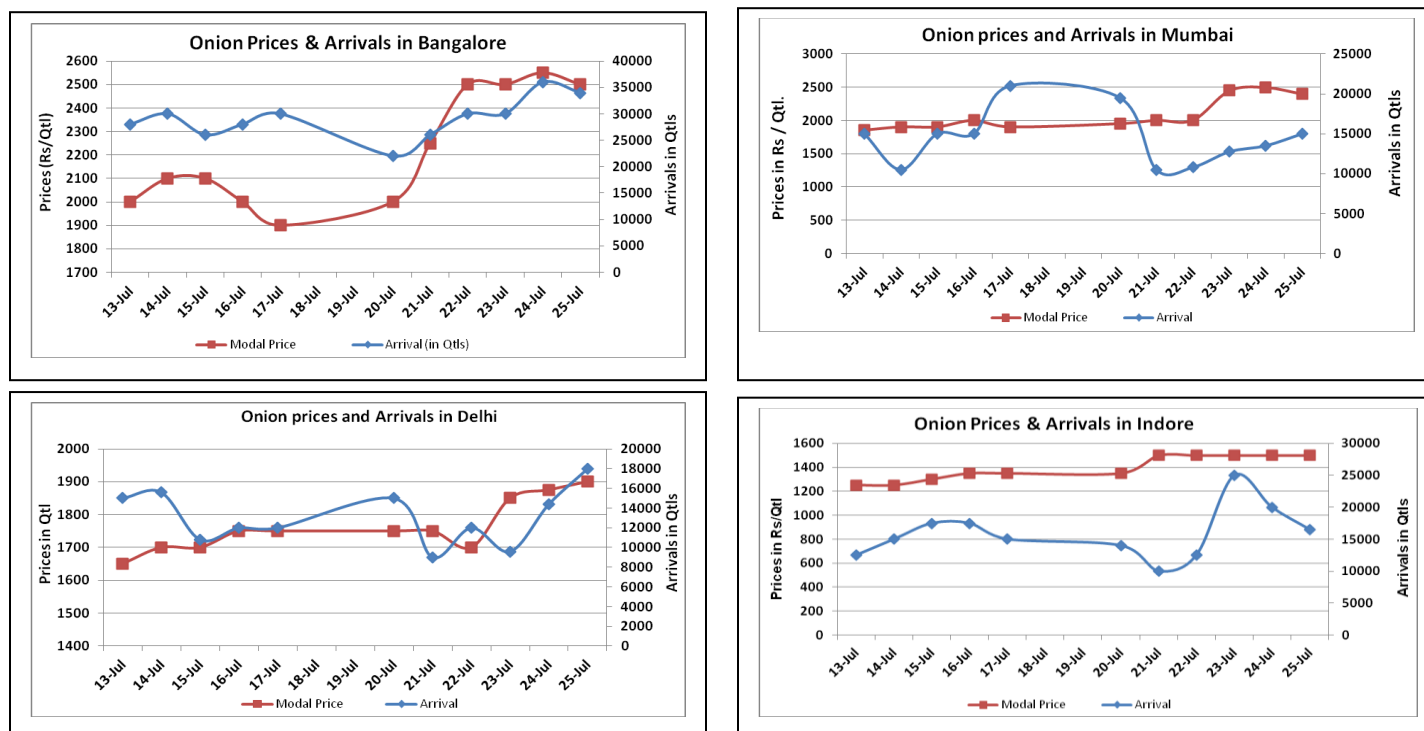


Onion Fundamentals:

- In Delhi, modal onion prices are expected to be in the range of Rs 1700 to Rs 2000/ quintal due to lower arrivals in market and expectation of lower crop in kharif season.
- In Karnataka, kharif sowing is in progress. So far, 56266 hectares of area is sown compared to last year's 36663 hectares as on 13-07-2015. Fresh crop has started arriving in market in smaller quantity.
- In Andhra Pradesh, Kharif sowing is in progress. 8000 hectares onion has sown as compared to last year's 13117 hectares during same time. Lower sowing is due to lower rainfall in producing districts.
- In Kharif producing regions, if rainfall in coming weeks doesn't improve it may put an impact on growing crop and lead to lower production and higher prices ahead.

Onion wholesale Prices & Arrivals in Producing & Consumption Centers



(Source: AGRIWATCH)

Note: The above graph is made on data collected by Agriwatch through private sources because Agmarknet data are not consistent and lots of gaps in reporting.

Onion Prices & Arrivals in Major Mandis as on 25.July.2015

| Mandis | Nashik | Lasalgaon | Pimpalgaon | Niphad | Pune | Indore | Delhi | Bangalore |
|----------------|-----------|-----------|------------|-----------|--------|----------|-----------|-----------|
| Price (Rs/Qtl) | 2400-2600 | Closed | Closed | 1400-2800 | Closed | 500-2500 | 1300-2500 | 2000-3000 |
| Arrivals (Qtl) | 500 | Closed | Closed | 13200 | Closed | 16500 | 18000 | 34000 |

Onion Prices & Arrivals in Major Mandis as on 24.July.2015

| Mandis | Nashik | Lasalgaon | Pimpalgaon | Niphad | Pune | Indore | Delhi | Bangalore |
|----------------|-----------|-----------|------------|--------|-----------|----------|-----------|-----------|
| Price (Rs/Qtl) | 2500-2800 | 2200-2800 | 2000-2900 | Closed | 2000-2300 | 500-2500 | 1250-2500 | 2000-3100 |
| Arrivals (Qtl) | 500 | 6000 | 12500 | Closed | 5000 | 20000 | 14400 | 36000 |

(Source: AGRIWATCH)

Onion Prices in major markets – Wholesale vs. Retail as on 24 July 2015

| ONION-Wholesale and Retail Prices | | |
|-----------------------------------|----------------------------|-------------------------|
| Centre | Wholesale Prices (Rs./Qtl) | Retail Prices (Rs./Qtl) |
| | 24-July-15 | 24-July-15 |
| DELHI | 1775 | 3800 |
| LUCKNOW | NR | NR |
| AHMEDABAD | 2700 | 3000 |
| BHOPAL | 2000 | 2200 |
| MUMBAI | 2050 | 2700 |
| JAIPUR | 1450 | 2500 |
| BHUBANESHWAR | 2800 | 3200 |
| KOLKATA | 2300 | 3400 |
| HYDERABAD | 2400 | 2600 |
| BENGALURU | 2600 | 2800 |
| TRIVANDRUM* | 5600 | 5900 |
| CHENNAI# | 2400 | 3000 |

*Small variety, # larger variety

(Source: Consumer Affairs)

Disclaimer

The information contained in this document has been compiled by Agriwatch from sources believed to be reliable, such as NHB, Agmarknet, etc. and directly from traders in mandis. However, users of this data are requested to use the information with due caution and crosscheck with other sources. This document is not, and should not be construed as an offer to sell or buy any commodities. This document may not be reproduced, distributed or published without the express consent of SFAC