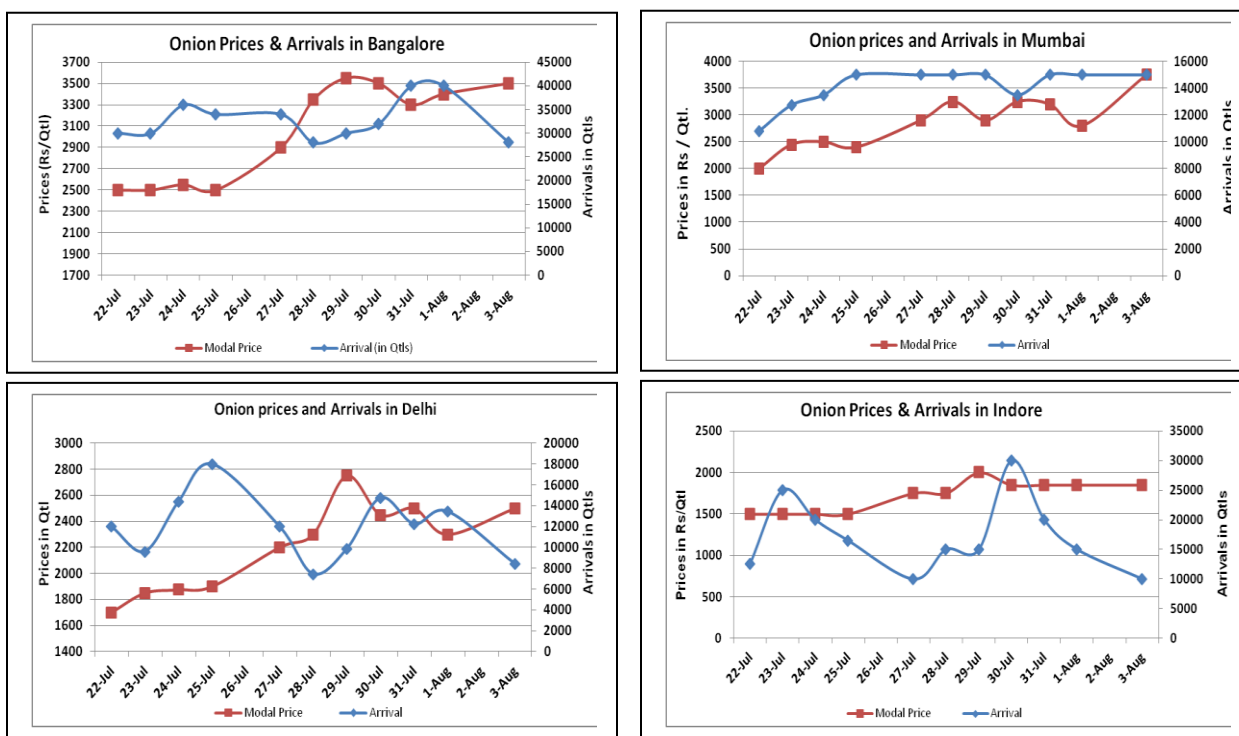


Onion Fundamentals:

- NAFED has floated a tender to import approximately 10000 tons of onion to stabilize the rising onion prices in domestic market.
- In Delhi, modal prices are trading at Rs 2800/ quintal. Approximately 45% onion is arriving in market from Rajasthan and rest from Maharashtra M.P and Gujarat.
- In Lasalgaon market, modal prices are hovering in the range of Rs 3250/ quintal amid lower arrivals.
- In Bangalore, Onion is arriving in market from local region and Maharashtra region which are contributing approximately 50% each to the total arrival.
- Smaller quantity of fresh onion from Karnataka and A.P has already started arriving in market. Prices are expected to put a slight cap once arrivals starts full fledged.

Onion wholesale Prices & Arrivals in Producing & Consumption Centers



(Source: AGRWATCH)

Note: The above graph is made on data collected by Agriwatch through private sources because Agmarknet data are not consistent and lots of gaps in reporting.

Onion Prices & Arrivals in Major Mandis as on 3.Aug.2015

Mandis	Nashik	Lasalgaon	Pimpalgaon	Niphad	Pune	Indore	Delhi	Bangalore
Price (Rs/Qtl)	3000-3600	3000-3500	3000-3700	1600-3700	3600-4100	500-3200	1700-3400	3000-4000
Arrivals (Qtl)	400	6000	10000	9600	8250	10000	8400	28000

Onion Prices & Arrivals in Major Mandis as on 1.Aug.2015

Mandis	Nashik	Lasalgaon	Pimpalgaon	Niphad	Pune	Indore	Delhi	Bangalore
Price (Rs/Qtl)	3000-3500	Closed	Closed	1500-3200	Closed	500-3200	1500-3100	3000-3800
Arrivals (Qtl)	700	Closed	Closed	12000	Closed	15000	13440	40000

(Source: AGRWATCH)

Wholesale and Retail Prices in Major Markets:

Wholesale Prices											Retail Prices
Prices in Rs/Quintal	3.Aug.2015#			1.Aug.2015#			Agmarknet 1Aug.2015*			Consumer Affairs 3 rd Aug	Consumer Affairs 3 rd Aug
Market	Min. Price	Max. Price	Modal Price	Min. Price	Max. Price	Modal Price	Min. Price	Max. Price	Modal Price		
Delhi	1700	3400	2500	1500	3100	2300	1000	3000	2278	2188	4500
Lasalgaon	3000	3500	3250	Closed	Closed	Closed	1700	3476	3100	NA	NA
Pimpalgaon	3000	3700	3350	Closed	Closed	Closed	1400	3750	3250	NA	NA
Pune	3600	4100	3850	Closed	Closed	Closed	1700	3800	3100	NA	NA
Mumbai	3500	4000	3750	2000	3600	2800	3000	3600	3300	3300	4000
Indore	500	3200	1850	500	3200	1850	1000	3000	2250	1500	1800
Bangalore	3000	4000	3500	3000	3800	3400	-	-	-	3800	4000
Ahmednagar	3500	4000	3750	3500	4000	3750	-	-	-	NA	NA
Solapur	500	3500	2000	500	3500	2000	925	4100	2800	NA	NA

(Source: #Agriwatch, *Agmarknet)

Onion Arrivals in Major Markets:

Arrivals in Qtls	Ahmadabad	Pune	Mumbai	Delhi	Indore	Bangalore	Ahmednagar	Solapur
3rd Aug *	4638	8250	15000	8400	10000	28000	6000	2000
1st Aug *	2908	Closed	15000	13440	15000	40000	6000	4000
1st Aug #	2908	10	8300	15479	3044	-	-	2840

(Source: *Agriwatch, # Agmarknet)

Disclaimer

The information contained in this document has been compiled by Agriwatch from sources believed to be reliable, such as NHB, Agmarknet, etc. and directly from traders in mandis. However, users of this data are requested to use the information with due caution and crosscheck with other sources. This document is not, and should not be construed as an offer to sell or buy any commodities. This document may not be reproduced, distributed or published without the express consent of SFAC