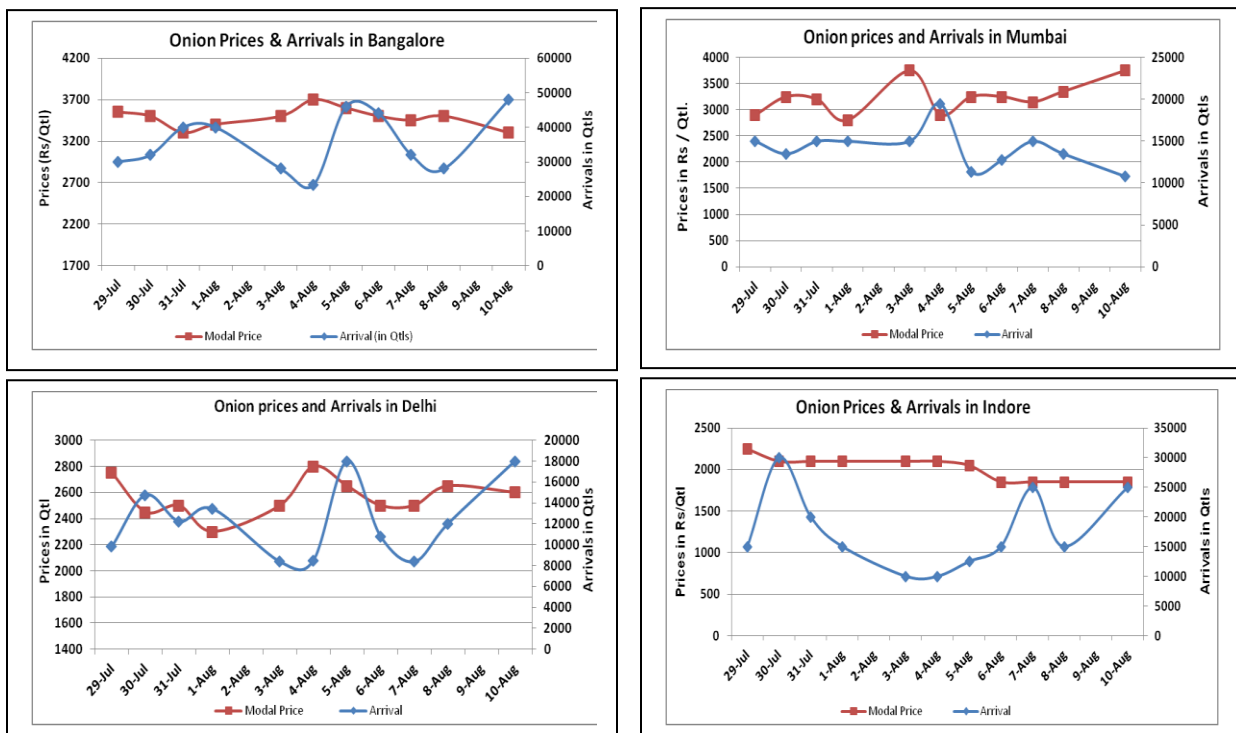


### Onion Fundamentals:

- In Delhi, government is selling onion at a fixed price of Rs 40/kg through retail outlets of DMS and Safal.
- In Bangalore market approximately 65% onion is arriving from local region and rest from Maharashtra. Local crop is expected to continue for coming months with same pace.
- In Hyderabad, 75% onion arriving in market is from local region and 25% is from Maharashtra region.
- NAFED has floated a tender to import approximately 10000 tons of onion to stabilize the rising onion prices in domestic market.

### Onion wholesale Prices & Arrivals in Producing & Consumption Centers



(Source: AGRWATCH)

Note: The above graph is made on data collected by Agriwatch through private sources because Agmarknet data are not consistent and lots of gaps in reporting.

### Onion Prices & Arrivals in Major Mandis as on 10.Aug.2015

Mandis	Nashik	Lasalgaon	Pimpalgaon	Niphad	Pune	Indore	Delhi	Bangalore
Price (Rs/Qtl)	3000-3500	3200-3600	3200-3500	3000-3800	3300-4000	1000-3400	1500-3700	2800-3800
Arrivals (Qtl)	500	3000	5625	6000	12000	12500	18000	48000

### Onion Prices & Arrivals in Major Mandis as on 8.Aug.2015

Mandis	Nashik	Lasalgaon	Pimpalgaon	Niphad	Pune	Indore	Delhi	Bangalore
Price (Rs/Qtl)	3200-3500	Closed	Closed	1500-3000	Closed	500-3400	1600-3700	3000-4000
Arrivals (Qtl)	1500	Closed	Closed	4800	Closed	12500	12000	28000

(Source: AGRWATCH)

### Wholesale and Retail Prices in Major Markets:

Wholesale Prices											Retail Prices
Prices in Rs/Quintal	10.Aug.2015#			8.Aug.2015#			Agmarknet 8 <sup>th</sup> .Aug.2015*			Consumer Affairs 10th Aug	Consumer Affairs 10 <sup>th</sup> Aug
Market	Min. Price	Max. Price	Modal Price	Min. Price	Max. Price	Modal Price	Min. Price	Max. Price	Modal Price	Modal Price	Modal Price
Delhi	1500	3700	2600	1600	3700	2650	950	3500	2637	NR	NR
Lasalgaon	3200	3600	3480	Closed	Closed	Closed	1500	3700	3150	-	-
Pimpalgaon	3200	3500	3350	Closed	Closed	Closed	1800	3700	3301	-	-
Pune	3300	4000	3650	Closed	Closed	Closed	-	-	-	-	-
Mumbai	3500	4000	3750	2500	4200	3350	2900	3700	3600	3550	4200
Indore	1000	3400	2200	500	3400	1950	-	-	-	NR	NR
Bangalore	2800	3800	3300	3000	4000	3500	-	-	-	4400	5000
Ahmednagar	3500	4100	3800	3500	4000	3750	-	-	-	-	-
Solapur	2000	4000	3000	700	3800	2250	800	4200	2600	-	-

(Source: #Agriwatch,\*Agmarknet)

### Onion Arrivals in Major Markets:

Arrivals in Qtls	Ahmadabad	Pune	Mumbai	Delhi	Indore	Bangalore	Ahmednagar	Solapur
10th Aug *	4062	12000	10800	18000	12500	48000	4000	4000
8th Aug *	3722	Closed	13500	12000	12500	28000	5000	3000
8st Aug #	3722	-	-	-	-	-	-	4700

(Source: \*Agriwatch, # Agmarknet)

#### Disclaimer

The information contained in this document has been compiled by Agriwatch from sources believed to be reliable, such as NHB, Agmarknet, etc. and directly from traders in mandis. However, users of this data are requested to use the information with due caution and crosscheck with other sources. This document is not, and should not be construed as an offer to sell or buy any commodities. This document may not be reproduced, distributed or published without the express consent of SFAC