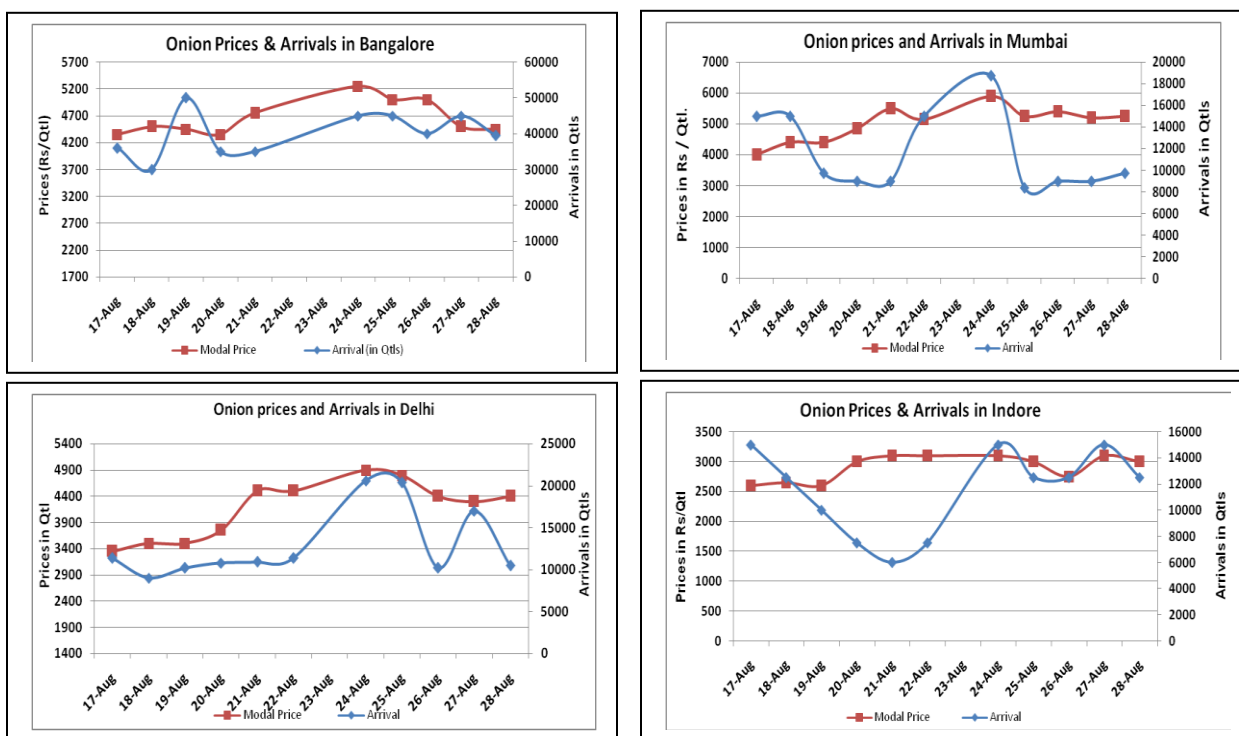


Onion Fundamentals:

- Wholesale prices are expected to stabilize in coming days because of the decision taken by Government against exports, hoarders and import of onion. Secondly fresh crop from A.P and Karnataka is reaching in different parts of the country.
- In Delhi, approximately 25% fresh onion is arriving in market and rest stored onion is arriving from Maharashtra. Fresh crop is arriving in market from Karnataka and Kolhapur.
- According to news sources, MMTTC has floated a tender to import 10000 tons onion from which one bid of 1000 tons has been approved. It is expected to arrive at JNPT and Chennai port by September 10.
- In Bangalore, approximately 90% onion is arriving from local region and rest from Maharashtra. Local crop is expected to continue for coming months with same pace.

Onion wholesale Prices & Arrivals in Producing & Consumption Centers



(Source: AGRIWATCH)

Note: The above graph is made on data collected by Agriwatch through private sources because Agmarknet data are not consistent and lots of gaps in reporting.

Onion Prices & Arrivals in Major Mandis as on 28.Aug.2015

Mandis	Nashik	Lasalgaon	Pimpalgaon	Niphad	Pune	Indore	Delhi	Bangalore
Price (Rs/Qtl)	Closed	5000-5500	4700-5400	Closed	4300-6000	1000-5000	4000-5000	3500-5400
Arrivals (Qtl)	Closed	3840	8375	Closed	5250	12500	10500	39500

Onion Prices & Arrivals in Major Mandis as on 27.Aug.2015

Mandis	Nashik	Lasalgaon	Pimpalgaon	Niphad	Pune	Indore	Delhi	Bangalore
Price (Rs/Qtl)	4500-5000	5000-5500	-	4000-5600	5400-6000	1000-5200	3500-4800	3000-4800
Arrivals (Qtl)	200	2500	-	1500	3750	15000	12750	45000

(Source: AGRIWATCH)

Wholesale and Retail Prices in Major Markets:

Wholesale Prices											Retail Prices
Prices in Rs/Quintal	28.Aug.2015#			27.Aug.2015#			Agmarknet 27 th .Aug.2015*			Consumer Affairs 28th Aug	Consumer Affairs 28 th Aug
Market	Min. Price	Max. Price	Modal Price	Min. Price	Max. Price	Modal Price	Min. Price	Max. Price	Modal Price	Modal Price	Modal Price
Delhi	4000	5000	4400	3500	4800	4300	-	-	-	NR	6700
Lasalgaon	5000	5500	4800	5000	5500	5250	2500	5400	4750	-	-
Pimpalgaon	4700	5400	4900	-	-	-	2200	5776	4900	-	-
Pune	4300	6000	5150	5400	6000	5700	1000	5800	5200	-	-
Mumbai	4500	6000	5250	4500	5800	5200	5000	6000	5900	5500	6200
Indore	1000	5000	3000	1000	5200	3100	-	-	-	3450	3800
Bangalore	3500	5400	4450	3000	4800	4500	3000	4600	3800	NR	NR
Ahmednagar	3000	6300	4650	3000	6300	4650	1500	6300	5250	-	-
Solapur	3500	5600	5000	2000	5000	4000	800	6100	3800	-	-

(Source: #Agriwatch,*Agmarknet)

Onion Arrivals in Major Markets:

Arrivals in Qtls	Ahmadabad	Pune	Mumbai	Delhi	Indore	Bangalore	Ahmednagar	Solapur
28th Aug *	1710	5250	9750	10500	12500	39500	3500	2000
27th Aug *	-	3750	9000	12750	15000	45000	3500	3500
27th Aug #	1721	2760	6550	-	-	30250	3830	470

(Source: *Agriwatch, # Agmarknet)

Disclaimer

The information contained in this document has been compiled by Agriwatch from sources believed to be reliable, such as NHB, Agmarknet, etc. and directly from traders in mandis. However, users of this data are requested to use the information with due caution and crosscheck with other sources. This document is not, and should not be construed as an offer to sell or buy any commodities. This document may not be reproduced, distributed or published without the express consent of SFAC