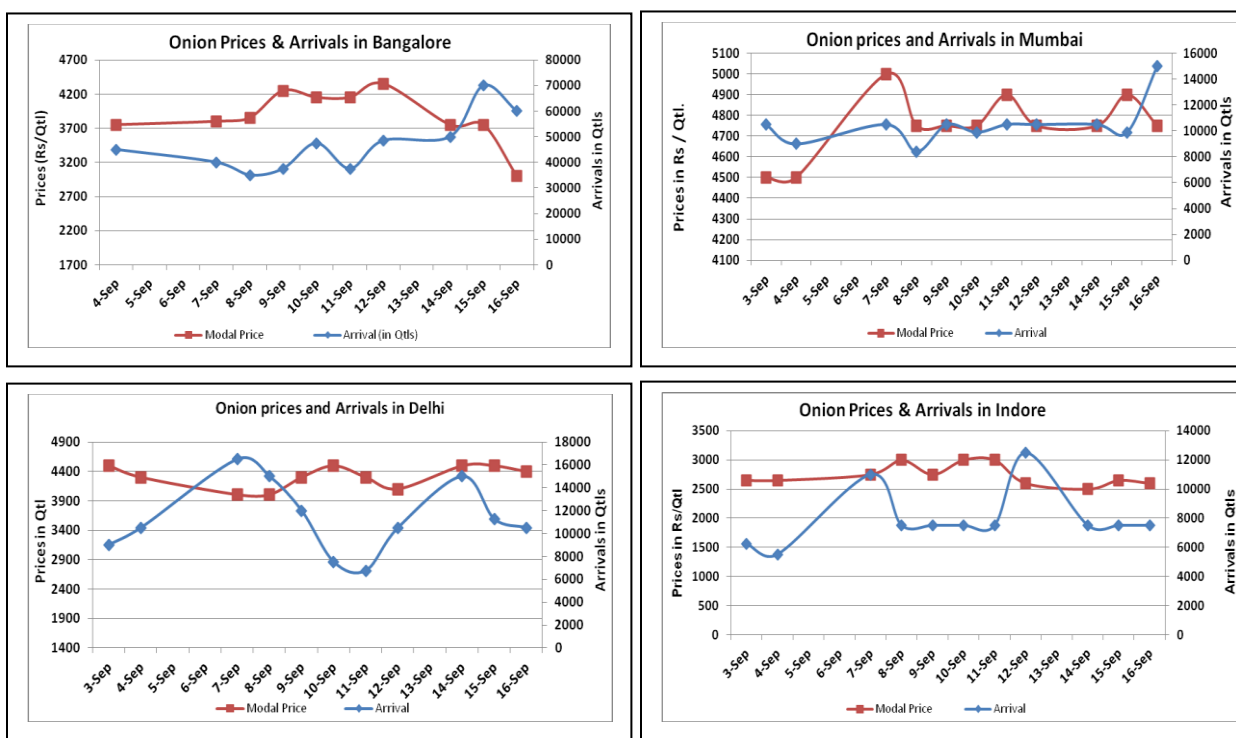


### Onion Fundamentals:

- According to trade sources kharif onion acreage is expected to be lesser than last year due to lesser rains but expected that area may be covered up in late kharif season.
- In Delhi, modal prices during the week period were trading around Rs 3910/ quintal compared to last year's Rs 1775/ quintal during same time.
- In Delhi market approximately 45% fresh onion is arriving in market from Karnataka and smaller quantity from Maharashtra.
- Total onion production in Kharif season (kharif + late kharif) is expected to be between 48-50 lakh tons. If further rainfall happens in Maharashtra and Karnataka it may increase the prospect of late kharif crop.

### Onion wholesale Prices & Arrivals in Producing & Consumption Centers



(Source: AGRIWATCH)

Note: The above graph is made on data collected by Agriwatch through private sources because Agmarknet data are not consistent and lots of gaps in reporting.

### Onion Prices & Arrivals in Major Mandis as on 16.Sept.2015

Mandis	Nashik	Lasalgaon	Pimpalgaon	Niphad	Pune	Indore	Delhi	Bangalore
Price (Rs/Qtl)	4000-4500	3000-4400	3800-4500	2500-4300	4000-5000	1000-4200	3500-5000	2000-4000
Arrivals (Qtl)	300	3000	5625	750	9000	7500	10500	60000

### Onion Prices & Arrivals in Major Mandis as on 15.Sept.2015

Mandis	Nashik	Lasalgaon	Pimpalgaon	Niphad	Pune	Indore	Delhi	Bangalore
Price (Rs/Qtl)	4500-4700	3000-5000	4100-5500	2300-4500	4500-5500	1000-4300	3500-5000	2500-5000
Arrivals (Qtl)	150	2000	5000	625	6000	7500	11250	70000

(Source: AGRWATCH)

## Wholesale and Retail Prices in Major Markets:

Wholesale Prices											Retail Prices
Prices in Rs/Quintal	16.Sept.2015#			15.Sept.2015#			Agmarknet Sept.2015* 15 <sup>th</sup>			Consumer Affairs 16 <sup>th</sup> Sept.	Consumer Affairs 16 <sup>th</sup> Sept.
Market	Min. Price	Max. Price	Modal Price	Min. Price	Max. Price	Modal Price	Min. Price	Max. Price	Modal Price	Modal Price	Modal Price
Delhi	3500	5000	4400	3500	5000	4500	3250	5000	4186	4125	5900
Lasalgaon	3000	4400	3700	3000	5000	4000	2500	4481	4100	-	-
Pimpalgaon	3800	4500	4150	4100	5500	4800	2601	4976	4100	-	-
Pune	4000	5000	4500	4500	5500	5000	2000	5300	5000	-	-
Mumbai	4000	5500	4750	4000	5800	4900	4500	5500	5200	5200	5900
Indore	1000	4200	2600	1000	4300	2650	1500	4500	4000	4000	4400
Bangalore	2000	4000	3000	2500	5000	3750	3000	4600	3800	5200	5500
Ahmednagar	4500	5500	5000	4500	5500	5000	-	-	-	-	-
Solapur	500	4000	2250	1000	5500	3250	1000	6000	3000	-	-

(Source: #Agriwatch, \*Agmarknet)

## Onion Arrivals in Major Markets:

Arrivals in Qtls	Ahmadabad	Pune	Mumbai	Delhi	Indore	Bangalore	Ahmednagar	Solapur
16th Sept *	2495	9000	15000	10500	7500	60000	1300	8000
15th Sept *	2062	6000	9900	11250	7500	70000	1300	8000
15th Sept #	2062	7920	7460	11428	3105	70650	NR	2400

(Source: \*Agriwatch, # Agmarknet)

## Disclaimer

The information contained in this document has been compiled by Agriwatch from sources believed to be reliable, such as NHB, Agmarknet, etc. and directly from traders in mandis. However, users of this data are requested to use the information with due caution and crosscheck with other sources. This document is not, and should not be construed as an offer to sell or buy any commodities. This document may not be reproduced, distributed or published without the express consent of SFAC