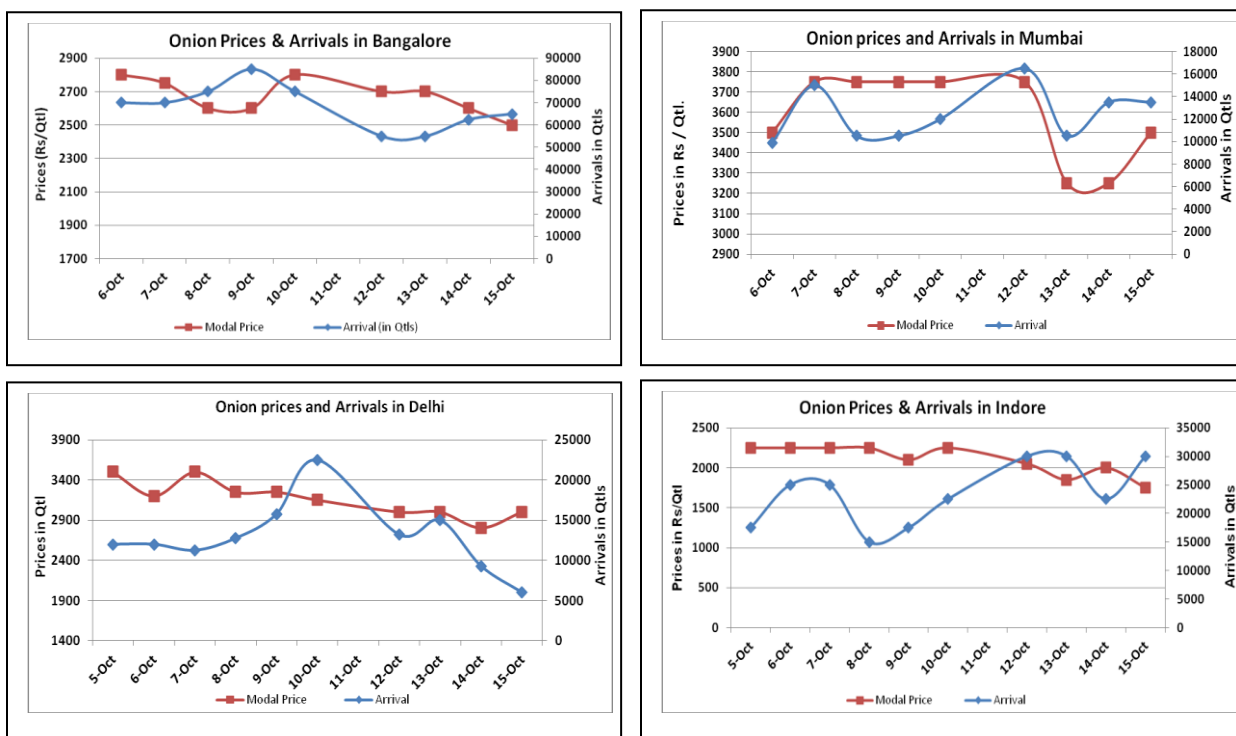


## Onion Fundamentals:

- In onion producing markets prices have declined due to lower demand because of “Navaratri” Festivals and secondly availability of fresh crop.
- In Delhi, onion is arriving in market from Rajasthan, Maharashtra and M.P. Also onion from Afghanistan/Pakistan is arriving in Azadpur mandi.
- In Maharashtra harvesting of kharif onion has started in Kolhapur, Ahmednagar and Nasik but peak harvest will be during month of November.
- Kharif area in Karnataka and A.P has reported higher than last year but in Maharashtra area is approximately 30% lower than last year.

## Onion wholesale Prices & Arrivals in Producing & Consumption Centers



(Source: AGRIWATCH)

Note: The above graph is made on data collected by Agriwatch through private sources because Agmarknet data are not consistent and lots of gaps in reporting.

## Onion Prices & Arrivals in Major Mandis as on 15.Oct.2015

Mandis	Nashik	Lasalgaon	Pimpalgaon	Niphad	Pune	Indore	Delhi	Bangalore
Price (Rs/Qtl)	2500-3600	2500-3000	2500-4000	2000-2200	3000-4000	500-3000	1500-3200	2000-3000
Arrivals (Qtl)	700	3000	3750	225	13500	30000	6000	65000

## Onion Prices & Arrivals in Major Mandis as on 14.Oct.2015

Mandis	Nashik	Lasalgaon	Pimpalgaon	Niphad	Pune	Indore	Delhi	Bangalore
Price (Rs/Qtl)	2000-3700	2500-3000	2800-3800	1800-2500	3000-4000	800-3200	1200-3000	2000-3200
Arrivals (Qtl)	800	3000	2500	525	15000	22500	2800	62500

(Source: AGRIWATCH)

### Wholesale and Retail Prices in Major Markets:

Wholesale Prices											Retail Prices
Prices in Rs/Quintal	15.Oct.2015#			14.Oct.2015#			Agmarknet 14 <sup>th</sup> Oct.2015*			Consumer Affairs 15 <sup>th</sup> Oct.	Consumer Affairs 15 <sup>th</sup> Oct.
Market	Min. Price	Max. Price	Modal Price	Min. Price	Max. Price	Modal Price	Min. Price	Max. Price	Modal Price	Modal Price	Modal Price
Delhi	1500	3200	3000	1200	3000	2800	1050	2500	1927	2475	5200
Lasalgaon	2500	3000	2750	2500	3000	2750	-	-	-	-	-
Pimpalgaon	2500	4000	3250	2800	3800	3300	-	-	-	-	-
Pune	3000	4000	3500	3000	4000	3500	700	2000	1350	-	-
Mumbai	3000	4000	3500	3000	3500	3250	1100	2000	1550	3800	4900
Indore	500	3000	1750	800	3200	2000	500	2000	1500	NR	NR
Bangalore	2000	3000	2500	2000	3200	2600	1600	2000	1800	NR	NR
Ahmednagar	2000	3000	2500	2500	3200	2850	-	-	-	-	-
Solapur	500	3000	1750	500	3000	1750	-	-	-	-	-

(Source: #Agriwatch,\*Agmarknet)

### Onion Arrivals in Major Markets:

Arrivals in Qtls	Ahmadabad	Pune	Mumbai	Delhi	Indore	Bangalore	Ahmednagar	Solapur
15th Oct *	NR	13500	13500	6000	30000	65000	13000	18000
14th Oct *	4220	15000	13500	9300	22500	62500	12500	30000
14th Oct #	5501	11909	7350	12636	3425	61270	-	-

(Source: \*Agriwatch, # Agmarknet)

#### Disclaimer

The information contained in this document has been compiled by Agriwatch from sources believed to be reliable, such as NHB, Agmarknet, etc. and directly from traders in mandis. However, users of this data are requested to use the information with due caution and crosscheck with other sources. This document is not, and should not be construed as an offer to sell or buy any commodities. This document may not be reproduced, distributed or published without the express consent of SFAC