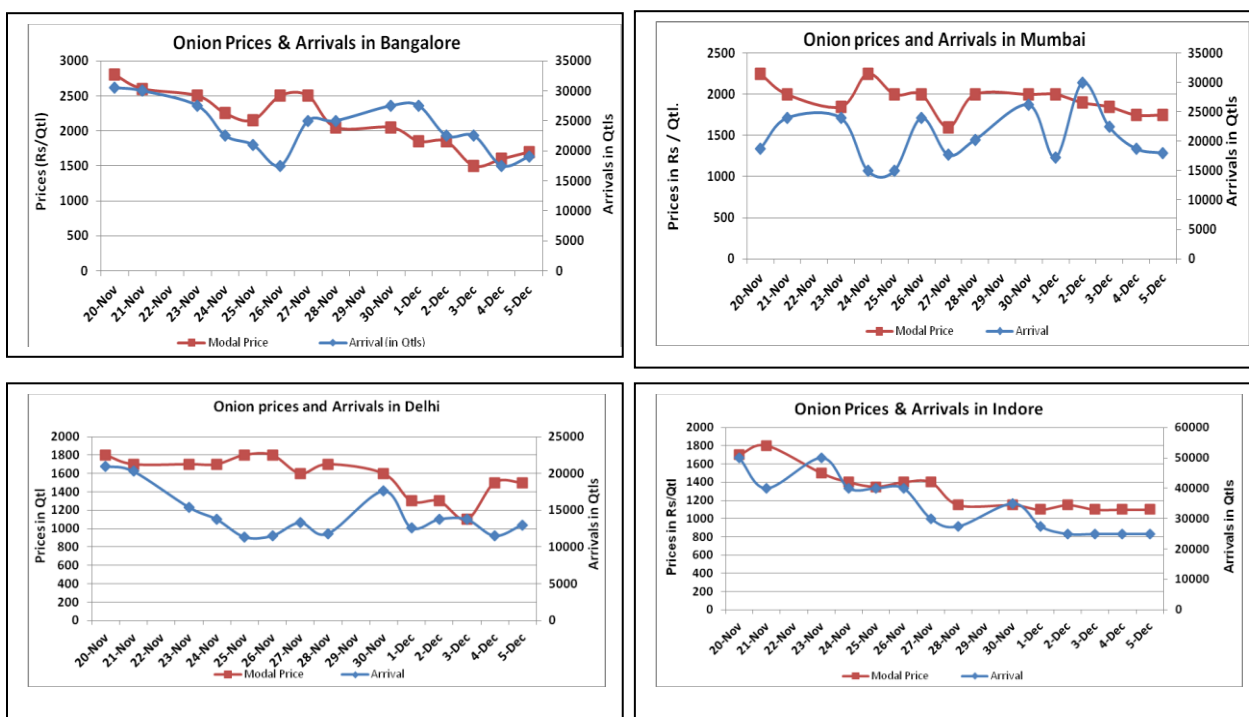


Onion Fundamentals:

- In Bangalore, onion is arriving in market from local region and Maharashtra which are contributing approximately 50% each to the total arrivals.
- In Delhi, modal onion prices are trading at Rs 1400/ quintal compared to last year prices of Rs 1500/ quintal during same time.
- In Karnataka, Rabi sowing has started and targeted area is 20475 hectares. As on 30.11.2015 approximately 3580 hectares of area is sown compared to last year area of 5727 hectares during same time.
- In Lasalgaon market modal prices are trading at Rs 1720/ quintal compared to last year price of Rs 1500/ quintal during same time.

Onion wholesale Prices & Arrivals in Producing & Consumption Centers



(Source: AGRIWATCH)

Note: The above graph is made on data collected by Agriwatch through private sources because Agmarknet data are not consistent and lots of gaps in reporting.

Onion Prices & Arrivals in Major Mandis as on 05.Dec.2015

Mandis	Nashik	Lasalgaon	Pimpalgaon	Niphad	Pune	Indore	Delhi	Bangalore
Price (Rs/Qtl)	1000-1500	Closed	Closed	Closed	Closed	NR	1400-2000	1200-2200
Arrivals (Qtl)	1000	Closed	Closed	Closed	Closed	NR	13000	19000

Onion Prices & Arrivals in Major Mandis as on 04.Dec.2015

Mandis	Nashik	Lasalgaon	Pimpalgaon	Niphad	Pune	Indore	Delhi	Bangalore
Price (Rs/Qtl)	1000-1700	1100-1700	1000-1700	Closed	1200-2400	500-1700	1400-2000	1000-2200
Arrivals (Qtl)	800	18000	25000	Closed	22500	25000	11500	17500

(Source: AGRIWATCH)

Wholesale and Retail Prices in Major Markets:

Wholesale Prices											Retail Prices
Prices in Rs/Quintal	05.Dec.2015#			04.Dec.2015#			Agmarknet 04 Dec.2015*			Consumer Affairs 04 Dec.	Consumer Affairs 04 Dec.
Market	Min. Price	Max. Price	Modal Price	Min. Price	Max. Price	Modal Price	Min. Price	Max. Price	Modal Price	Modal Price	Modal Price
Delhi	1400	2000	1500	1400	2000	1500	375	2000	1411	1188	3300
Lasalgaon	Closed	Closed	Closed	1100	1700	1400	900	2001	1400	-	-
Pimpalgaon	Closed	Closed	Closed	1000	1700	1350	400	2044	1201	-	-
Pune	Closed	Closed	Closed	1200	2400	1800	600	2100	1700	-	-
Mumbai	1500	2000	1750	1500	2000	1750	1200	2300	1750	1800	3800
Indore	NR	NR	NR	500	1700	1100	250	1375	1125	1400	1600
Bangalore	1200	2200	1700	1000	2200	1600	1000	2000	1500	3400	3800
Ahmednagar	1500	2000	1750	1500	2000	1750	-	-	-	-	-
Solapur	500	2700	1600	500	1700	1100	100	2700	1100	-	-

(Source: #Agriwatch,*Agmarknet)

Onion Arrivals in Major Markets:

Arrivals in Qtls	Ahmadabad	Pune	Mumbai	Delhi	Indore	Bangalore	Ahmednagar	Solapur
05 th Dec*	5469	Closed	18000	13000	NR	19000	25000	20000
04 th Dec*	5829	22500	18750	11500	25000	17500	40000	19000
04 th Dec #	5829	14750	12590	10506	10800	17670	-	20830

(Source: *Agriwatch, # Agmarknet)

Disclaimer

The information contained in this document has been compiled by Agriwatch from sources believed to be reliable, such as NHB, Agmarknet, etc. and directly from traders in mandis. However, users of this data are requested to use the information with due caution and crosscheck with other sources. This document is not, and should not be construed as an offer to sell or buy any commodities. This document may not be reproduced, distributed or published without the express consent of SFAC