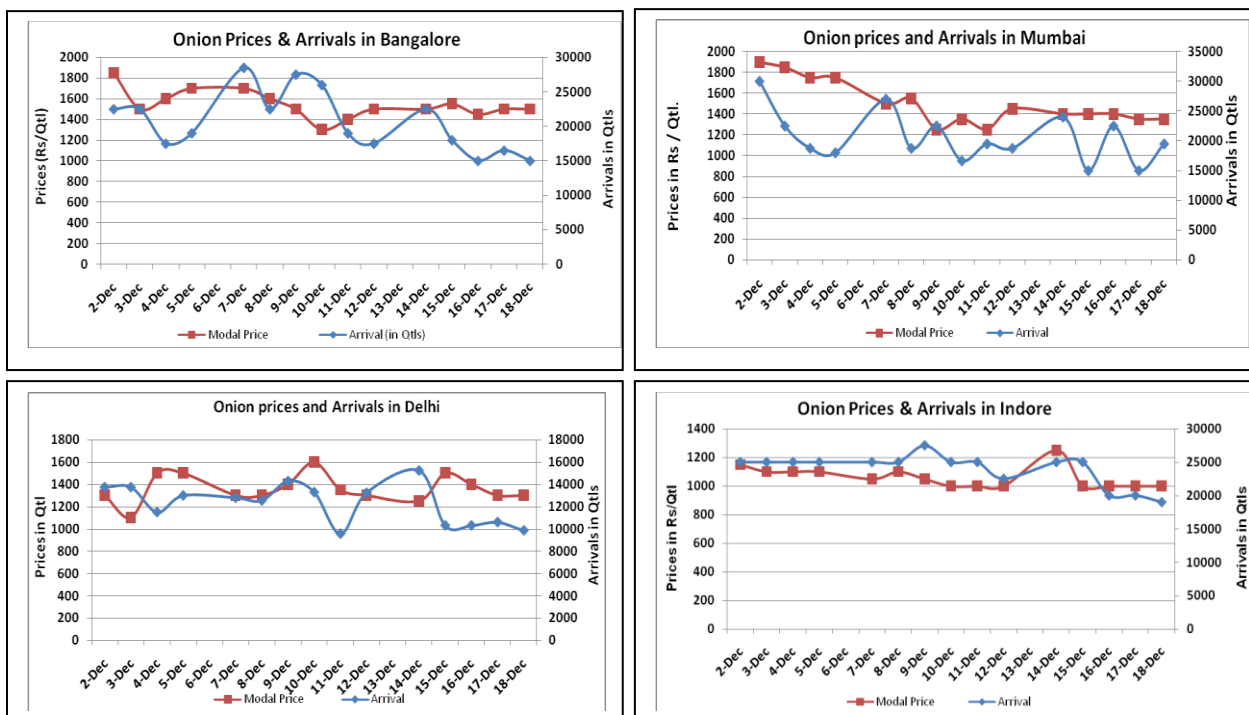


### Onion Fundamentals:

- Mostly lower supply reported in major domestic market on Friday.
- In Karnataka, Rabi sowing has started and targeted area is 20475 hectares. As on 7.12.2015 approximately 4061 hectares of area is sown compared to area of 8059 hectares during corresponding time last year.
- In Maharashtra, farmers are agitating and demanding the central Government to drop down or remove the MEP (Minimum Export Price) on onion which may increase the export and may support the falling onion prices.
- In A.P, total targeted area for Rabi season is approximately is 5054 hectares. As on 9.12.2015, approximately 2025 hectare of area is sown compared to area of 1904 hectares during corresponding time last year. As on date normal sown area is approximately 3010 hectares.
- In Bangalore, onion is arriving in market from local region and Maharashtra which are contributing approximately 50% each to the total arrivals.

### Onion wholesale Prices & Arrivals in Producing & Consumption Centers



(Source: AGRIWATCH)

Note: The above graph is made on data collected by Agriwatch through private sources because Agmarknet data are not consistent and lots of gaps in reporting.

### Onion Prices & Arrivals in Major Mandis as on 18.Dec.2015

Mandis	Nashik	Lasalgaon	Pimpalgaon	Niphad	Pune	Indore	Delhi	Bangalore
Price (Rs/Qtl)	600-1450	900-1200	900-1600	Closed	1000-2000	500-1500	1000-1800	1200-1800
Arrivals (Qtl)	800	26000	18375	Closed	18750	19000	9850	15000

### Onion Prices & Arrivals in Major Mandis as on 17.Dec.2015

Mandis	Nashik	Lasalgaon	Pimpalgaon	Niphad	Pune	Indore	Delhi	Bangalore
Price (Rs/Qtl)	600-1300	900-1200	800-1500	300-1150	1000-1800	500-1500	1000-1800	1200-1800
Arrivals (Qtl)	500	26000	17500	2400	22500	20000	10600	16500

(Source: AGRIWATCH)

### Wholesale and Retail Prices in Major Markets:

Wholesale Prices											Retail Prices
Prices in Rs/Quintal	18.Dec.2015#			17.Dec.2015#			Agmarknet 17 Dec.2015*			Consumer Affairs 18 Dec.	Consumer Affairs 18 Dec.
Market	Min. Price	Max. Price	Modal Price	Min. Price	Max. Price	Modal Price	Min. Price	Max. Price	Modal Price	Modal Price	Modal Price
Delhi	1000	1800	1300	1000	1800	1300	-	-	-	1025	3000
Lasalgaon	900	1200	1050	900	1200	1050	700	1402	1050	-	-
Pimpalgaon	900	1600	1350	800	1500	1200	300	1551	900	-	-
Pune	1000	2000	1500	1000	1800	1400	500	1700	1500	-	-
Mumbai	1200	1500	1350	1200	1500	1350	800	1600	1200	1200	2800
Indore	500	1500	1000	500	1500	1000	-	-	-	1400	1600
Bangalore	1200	1800	1500	1200	1800	1500	1000	1600	1300	2500	3000
Ahmednagar	200	2600	1400	200	2600	1400	-	-	-	-	-
Solapur	500	2000	1250	500	1700	1100	100	2100	1000	-	-

(Source: #Agriwatch,\*Agmarknet)

### Onion Arrivals in Major Markets:

Arrivals in Qtls	Ahmadabad	Pune	Mumbai	Delhi	Indore	Bangalore	Ahmednagar	Solapur
18 <sup>th</sup> Dec*	4298	18750	19500	9850	19000	15000	30000	19000
17 <sup>th</sup> Dec*	5582	22500	15000	10600	20000	16500	30000	17000
17 <sup>th</sup> Dec #	5582	12730	9770	-	-	16950	-	25580

(Source: \*Agriwatch, # Agmarknet)

### Disclaimer

The information contained in this document has been compiled by Agriwatch from sources believed to be reliable, such as NHB, Agmarknet, etc. and directly from traders in mandis. However, users of this data are requested to use the information with due caution and crosscheck with other sources. This document is not, and should not be construed as an offer to sell or buy any commodities. This document may not be reproduced, distributed or published without the express consent of SFAC