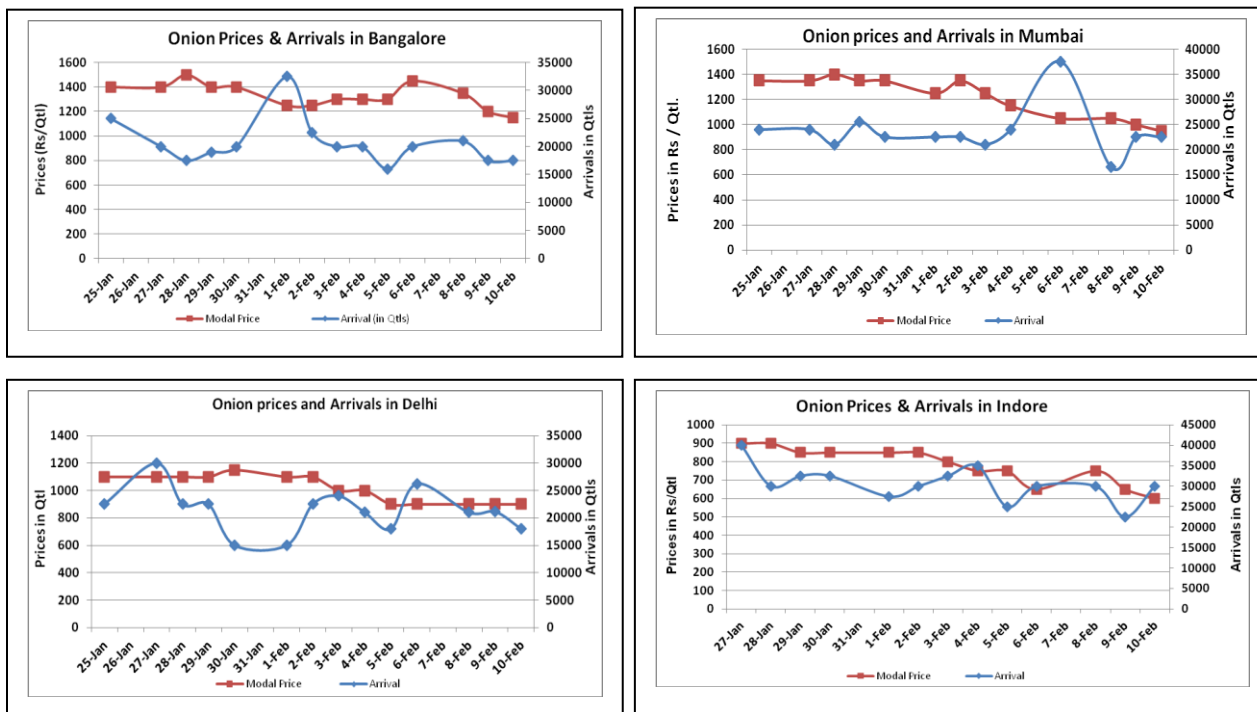


Onion Fundamentals:

- In Lasalgaon, modal prices are trading at its lowest price of Rs 600-Rs900/ quintal in last one year due because of continuous arrival of kharif and late kharif crop.
- In Delhi, modal prices are trading near Rs 900/ quintal compared to corresponding year's Rs 1480/ quintal during same period.
- In M.P, according to trade sources Rabi area is expected to 5-10% lesser compared to corresponding year area of 91387 hectares.
- In Maharashtra, total Rabi sowing as per State Government is 192802.5 hectares as on 25.1.2016. Last year total Rabi area was estimated 185118 hectares based on onion survey.

Onion wholesale Prices & Arrivals in Producing & Consumption Centers



(Source: AGRIWATCH)

Note: The above graph is made on data collected by Agriwatch through private sources because Agmarknet data are not consistent and lots of gaps in reporting.

Onion Prices & Arrivals in Major Mandis as on 10.Feb.2016

Mandis	Lasalgaon	Pimpalgaon	Niphad	Pune	Indore	Delhi	Bangalore
Price (Rs/Qtl)	600-900	700-1100	300-800	700-1200	300-800	600-1000	1000-1300
Arrivals (Qtl)	24000	14000	6000	10500	30000	18000	17500

Onion Prices & Arrivals in Major Mandis as on 09.Feb.2016

Mandis	Lasalgaon	Pimpalgaon	Niphad	Pune	Indore	Delhi	Bangalore
Price (Rs/Qtl)	600-900	600-1052	300-800	600-1200	500-800	700-1150	1000-1400
Arrivals (Qtl)	21000	15020	6000	24000	22500	21150	17500

(Source: AGRIWATCH)

Wholesale and Retail Prices in Major Markets:

Wholesale Prices											Retail Prices
Prices in Rs/Quintal	10.Feb.2016#			09.Feb.2016#			Agmarknet 09.Feb.2016*			Consumer Affairs 10 Feb.	Consumer Affairs 10 Feb.
Market	Min. Price	Max. Price	Modal Price	Min. Price	Max. Price	Modal Price	Min. Price	Max. Price	Modal Price	Modal Price	Modal Price
Delhi	600	1000	900	700	1150	900	-	-	-	825	2400
Lasalgaon	600	900	750	600	900	750	-	-	-	-	-
Pimpalgaon	700	1100	900	600	1052	826	-	-	-	-	-
Pune	700	1200	950	600	1200	900	-	-	-	-	-
Mumbai	800	1100	950	800	1200	1000	800	1400	1100	1100	2600
Indore	300	800	600	300	800	550	75	750	500	1200	1400
Bangalore	1000	1300	1150	1000	1400	1200	1200	1700	1450	-	-
Ahmednagar	100	1100	800	100	1100	800	-	-	-	-	-
Solapur	500	1500	1000	500	1500	1000	100	1600	500	-	-

(Source: #Agriwatch,*Agmarknet)

Onion Arrivals in Major Markets:

Arrivals in Qtls	Ahmedabad	Pune	Mumbai	Delhi	Indore	Bangalore	Ahmednagar	Solapur
10 th Feb*	6435	10500	22500	18000	30000	17500	25000	11000
09 th Feb*	8563	24000	22500	21150	22500	17500	25000	10000
09 th Feb#	-	-	10200	-	10480	17260	-	13170

(Source: *Agriwatch, # Agmarknet)

Disclaimer

The information contained in this document has been compiled by Agriwatch from sources believed to be reliable, such as NHB, Agmarknet, etc. and directly from traders in mandis. However, users of this data are requested to use the information with due caution and crosscheck with other sources. This document is not, and should not be construed as an offer to sell or buy any commodities. This document may not be reproduced, distributed or published without the express consent of SFAC