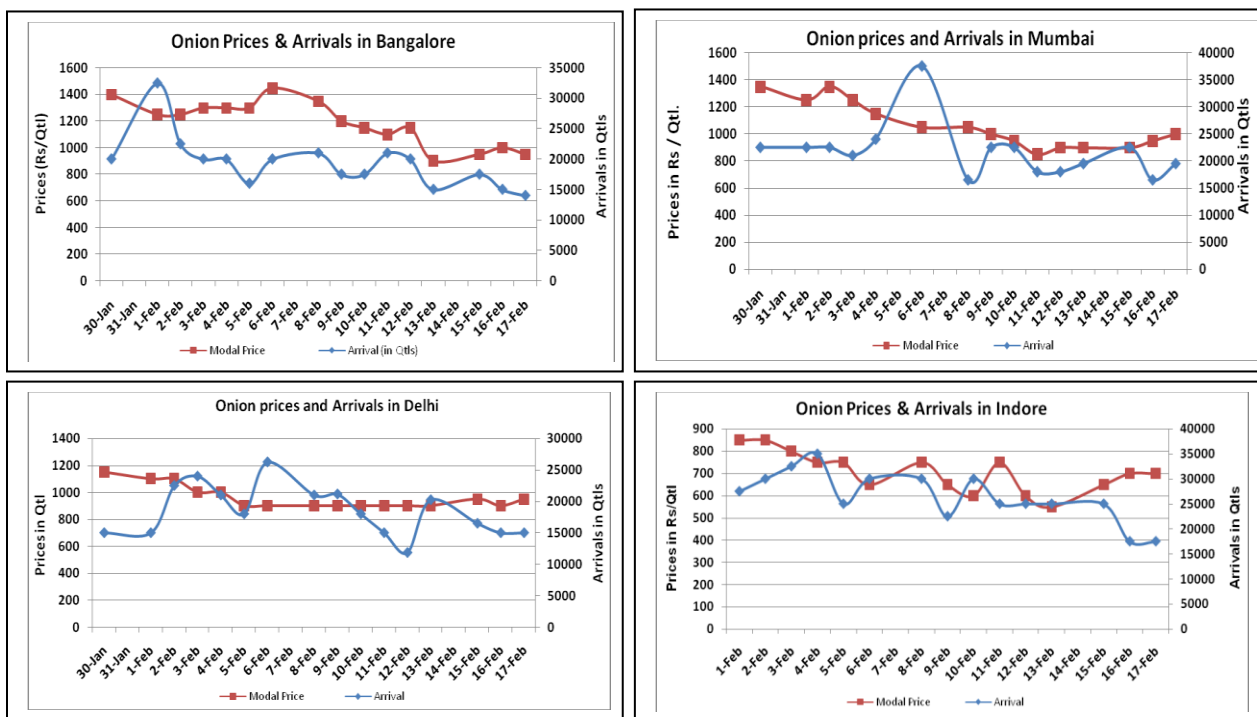


Onion Fundamentals:

- Mostly lower supply reported in major Onion market on Wednesday.
- Onion prices reported up slightly in the spot market due to decrease in supply.
- In Bangalore, onion is arriving in market from local region and Maharashtra which are contributing 50% each to the total arrival.
- In Delhi, modal prices are trading near Rs 900/ quintal compared to corresponding year's Rs 1480/ quintal during same period.
- In Maharashtra, as per State Government late kharif acreage this year is 107698 hectares compared to corresponding year's 104892 hectares based on Agriwatch onion survey.
- In Lasalgaon during the week period prices are trading near Rs 818/ quintal compared to corresponding year Rs 1453/ qtl during same period.

Onion wholesale Prices & Arrivals in Producing & Consumption Centers



(Source: AGRIWATCH)

Note: The above graph is made on data collected by Agriwatch through private sources because Agmarknet data are not consistent and lots of gaps in reporting.

Onion Prices & Arrivals in Major Mandis as on 17.Feb.2016

Mandis	Lasalgaon	Pimpalgaon	Niphad	Pune	Indore	Delhi	Bangalore
Price (Rs/Qtl)	500-800	500-1000	300-830	700-1100	500-1000	900-1100	500-1400
Arrivals (Qtl)	19000	10000	6000	18750	17500	15000	14000

Onion Prices & Arrivals in Major Mandis as on 16.Feb.2016

Mandis	Lasalgaon	Pimpalgaon	Niphad	Pune	Indore	Delhi	Bangalore
Price (Rs/Qtl)	500-750	800-1150	300-750	700-1200	500-1000	800-1200	500-1500
Arrivals (Qtl)	16000	8000	6000	18750	17500	15000	15000

(Source: AGRIWATCH)

Wholesale and Retail Prices in Major Markets:

Wholesale Prices											Retail Prices
Prices in Rs/Quintal	17.Feb.2016#			16.Feb.2016#			Agmarknet 16.Feb.2016*			Consumer Affairs 17 Feb.	Consumer Affairs 17 Feb.
Market	Min. Price	Max. Price	Modal Price	Min. Price	Max. Price	Modal Price	Min. Price	Max. Price	Modal Price	Modal Price	Modal Price
Delhi	900	1100	950	800	1200	900	450	1250	879	900	2400
Lasalgaon	500	800	650	500	750	650	400	970	700	-	-
Pimpalgaon	500	1000	750	800	1150	975	-	-	-	-	-
Pune	700	1100	900	700	1200	950	500	1100	900	-	-
Mumbai	900	1100	1000	800	1100	950	900	1300	1050	1100	2100
Indore	500	1000	700	500	1000	700	-	-	-	1000	1200
Bangalore	500	1400	950	500	1500	1000	900	1500	1200	-	-
Ahmednagar	300	1000	800	300	1000	800	-	-	-	-	-
Solapur	500	1100	950	200	1200	1000	100	1250	450	-	-

(Source: #Agriwatch,*Agmarknet)

Onion Arrivals in Major Markets:

Arrivals in Qtls	Ahmedabad	Pune	Mumbai	Delhi	Indore	Bangalore	Ahmednagar	Solapur
17th Feb*	7267	18750	19500	15000	17500	14000	12500	10000
16th Feb*	6165	18750	16500	15000	17500	15000	12500	9000
16th Feb#	NR	18430	7650	10573	-	14930	-	16830

(Source: *Agriwatch, # Agmarknet)

Disclaimer

The information contained in this document has been compiled by Agriwatch from sources believed to be reliable, such as NHB, Agmarknet, etc. and directly from traders in mandis. However, users of this data are requested to use the information with due caution and crosscheck with other sources. This document is not, and should not be construed as an offer to sell or buy any commodities. This document may not be reproduced, distributed or published without the express consent of SFAC