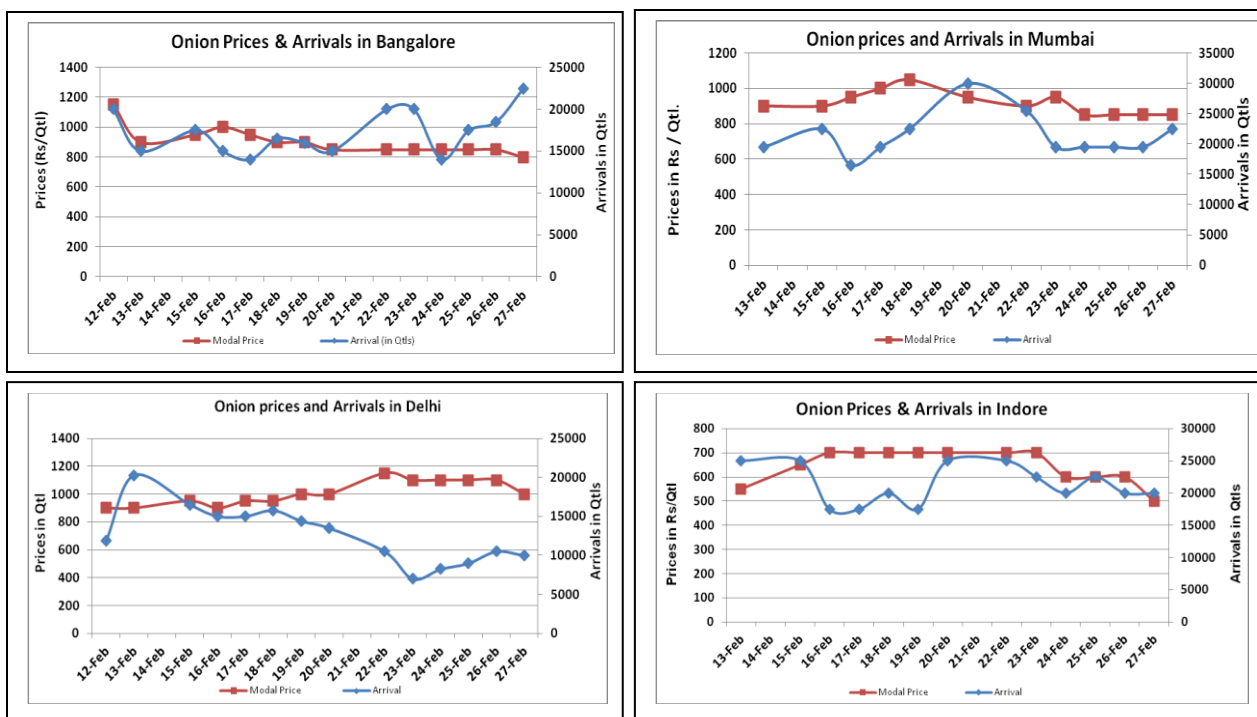


Onion Fundamentals:

- In Maharashtra, as per State Government rabi acreage is expected to be 192802 hectares. Rabi crop is expected to arrive in market after mid March.
- In M.P, fresh crop is arriving in market from local region only. According to trade sources both kharif and Rabi acreage is higher this year compared to corresponding year's area.
- In Delhi, modal prices are trading near Rs 900/ quintal compared to corresponding year's Rs 1480/ quintal during same period.
- In Lasalgaon during the week period prices are trading near Rs 700/ quintal compared to corresponding year Rs 1233/ qtl during same period.

Onion wholesale Prices & Arrivals in Producing & Consumption Centers



(Source: AGRWATCH)

Note: The above graph is made on data collected by Agriwatch through private sources because Agmarknet data are not consistent and lots of gaps in reporting.

Onion Prices & Arrivals in Major Mandis as on 27.Feb.2016

Mandis	Lasalgaon	Pimpalgaon	Niphad	Pune	Indore	Delhi	Bangalore
Price (Rs/Qtl)	Closed	Closed	Closed	Closed	500-800	900-1200	500-1100
Arrivals (Qtl)	Closed	Closed	Closed	Closed	20000	10000	22500

Onion Prices & Arrivals in Major Mandis as on 26.Feb.2016

Mandis	Lasalgaon	Pimpalgaon	Niphad	Pune	Indore	Delhi	Bangalore
Price (Rs/Qtl)	500-800	700-850	Closed	700-1000	300-900	900-1300	500-1200
Arrivals (Qtl)	17000	7000	Closed	15000	20000	10500	18500

(Source: AGRWATCH)

Wholesale and Retail Prices in Major Markets:

Wholesale Prices											Retail Prices
Prices in Rs/Quintal	27.Feb.2016#			26.Feb.2016#			Agmarknet 26.Feb.2016*			Consumer Affairs 26 Feb.	Consumer Affairs 26 Feb.
Market	Min. Price	Max. Price	Modal Price	Min. Price	Max. Price	Modal Price	Min. Price	Max. Price	Modal Price	Modal Price	Modal Price
Delhi	900	1200	1000	900	1300	1100	-	-	-	925	2600
Lasalgaon	Closed	Closed	Closed	500	800	700	400	826	701	-	-
Pimpalgaon	Closed	Closed	Closed	700	850	775	-	-	-	-	-
Pune	Closed	Closed	Closed	700	1000	900	400	900	600	-	-
Mumbai	700	1000	850	700	1000	850	650	1000	850	875	1700
Indore	500	800	500	300	900	600	-	-	-	1000	1200
Bangalore	500	1100	800	500	1200	850	900	1200	1050	-	-
Ahmednagar	200	900	700	200	800	650	-	-	-	-	-
Solapur	200	1100	800	500	1000	900	100	1300	550	-	-

(Source: #Agriwatch, *Agmarknet)

Onion Arrivals in Major Markets:

Arrivals in Qtls	Ahmedabad	Pune	Mumbai	Delhi	Indore	Bangalore	Ahmednagar	Solapur
27th Feb*	5433	Closed	22500	18000	20000	22500	20000	9000
26th Feb*	5856	15000	19500	10500	20000	18500	14000	9000
26thFeb#	5856	22670	9450	-	-	18900	-	14040

(Source: *Agriwatch, # Agmarknet)

Disclaimer

The information contained in this document has been compiled by Agriwatch from sources believed to be reliable, such as NHB, Agmarknet, etc. and directly from traders in mandis. However, users of this data are requested to use the information with due caution and crosscheck with other sources. This document is not, and should not be construed as an offer to sell or buy any commodities. This document may not be reproduced, distributed or published without the express consent of SFAC