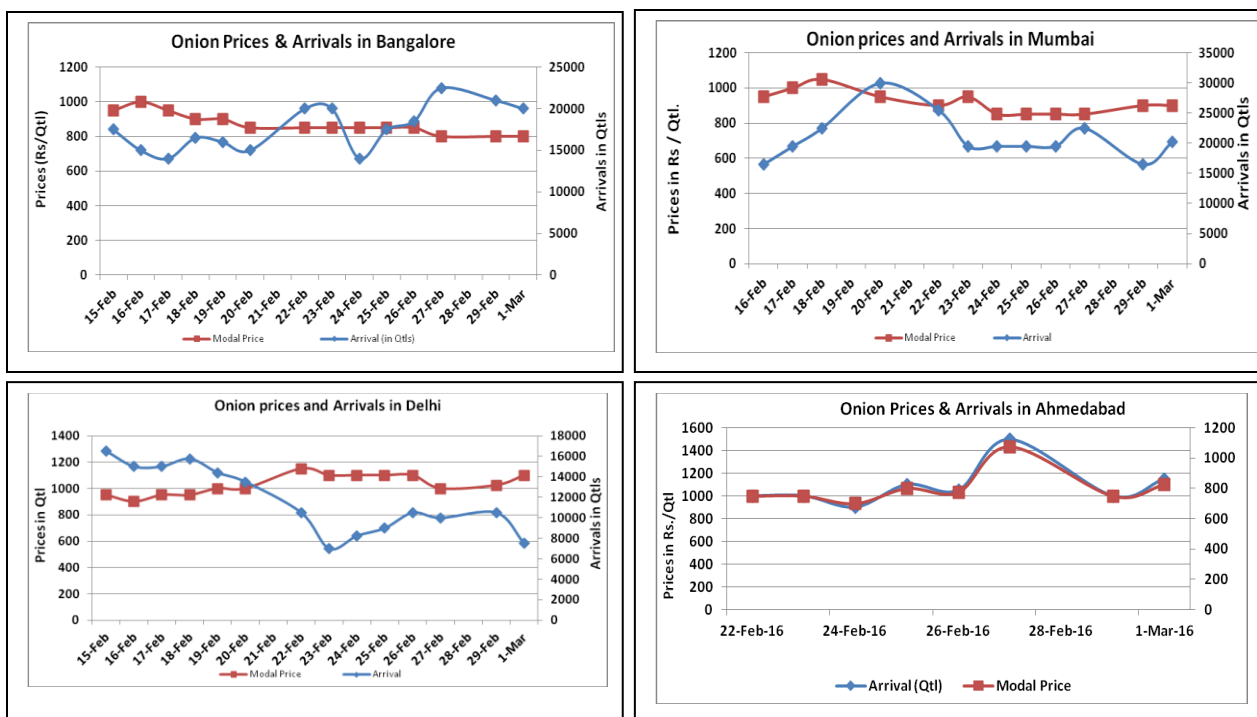


Onion Fundamentals:

- In Maharashtra, as per State Government Rabi acreage is expected to be 192802 hectares. Rabi crop is expected to arrive in market after mid March though smaller quantity has already started arriving in market.
- In M.P, fresh crop is arriving in market from local region only. According to trade sources both kharif and Rabi acreage is higher this year compared to corresponding year's area.
- In Lasalgaon during the week period prices are trading near Rs 700/ quintal compared to corresponding year Rs 1233/ qtl during same period.
- In Delhi, modal prices are trading near Rs 900/ quintal compared to corresponding year's Rs 1450/ quintal during same period.

Onion wholesale Prices & Arrivals in Producing & Consumption Centers



(Source: AGRIWATCH)

Note: The above graph is made on data collected by Agriwatch through private sources because Agmarknet data are not consistent and lots of gaps in reporting.

Onion Prices & Arrivals in Major Mandis as on 01.Mar.2016

Mandis	Lasalgaon	Pimpalgaon	Niphad	Pune	Indore	Delhi	Bangalore
Price (Rs/Qtl)	600-825	750-900	350-750	600-1000	Closed	900-1300	500-1100
Arrivals (Qtl)	15000	8000	6000	18750	Closed	7500	20000

Onion Prices & Arrivals in Major Mandis as on 29.Feb.2016

Mandis	Lasalgaon	Pimpalgaon	Niphad	Pune	Indore	Delhi	Bangalore
Price (Rs/Qtl)	500-900	700-850	400-780	700-1000	400-800	900-1200	500-1100
Arrivals (Qtl)	15000	6000	7000	18750	30000	10500	21000

(Source: AGRIWATCH)

Wholesale and Retail Prices in Major Markets:

Wholesale Prices											Retail Prices
Prices in Rs/Quintal	01.Mar.2016#			29.Feb.2016#			Agmarknet 29.Feb.2016*			Consumer Affairs 01 Mar.	Consumer Affairs 01 Mar.
Market	Min. Price	Max. Price	Modal Price	Min. Price	Max. Price	Modal Price	Min. Price	Max. Price	Modal Price	Modal Price	Modal Price
Delhi	900	1300	1100	900	1200	1025	450	1250	914	925	260
Lasalgaon	600	825	700	500	900	700	-	-	-	-	-
Pimpalgaon	750	900	825	700	850	775	-	-	-	-	-
Pune	600	1000	850	700	1000	900	400	900	800	-	-
Mumbai	700	1100	900	700	1100	900	650	1000	850	875	1700
Indore	Closed	Closed	Closed	400	800	600	-	-	-	900	1100
Bangalore	500	1100	800	500	1100	800	800	1100	950	-	-
Ahmednagar	400	900	725	400	900	725	-	-	-	-	-
Solapur	200	800	600	200	1000	700	100	1050	550	-	-

(Source: #Agriwatch, *Agmarknet)

Onion Arrivals in Major Markets:

Arrivals in Qtls	Ahmedabad	Pune	Mumbai	Delhi	Indore	Bangalore	Ahmednagar	Solapur
01st Feb*	6650	18750	20250	7500	Closed	20000	20000	8000
29th Feb*	7899	18750	16500	10500	30000	21000	20000	8000
29thFeb#	7899	18800	8450	4389	-	21900	-	18720

(Source: *Agriwatch, # Agmarknet)

Disclaimer

The information contained in this document has been compiled by Agriwatch from sources believed to be reliable, such as NHB, Agmarknet, etc. and directly from traders in mandis. However, users of this data are requested to use the information with due caution and crosscheck with other sources. This document is not, and should not be construed as an offer to sell or buy any commodities. This document may not be reproduced, distributed or published without the express consent of SFAC