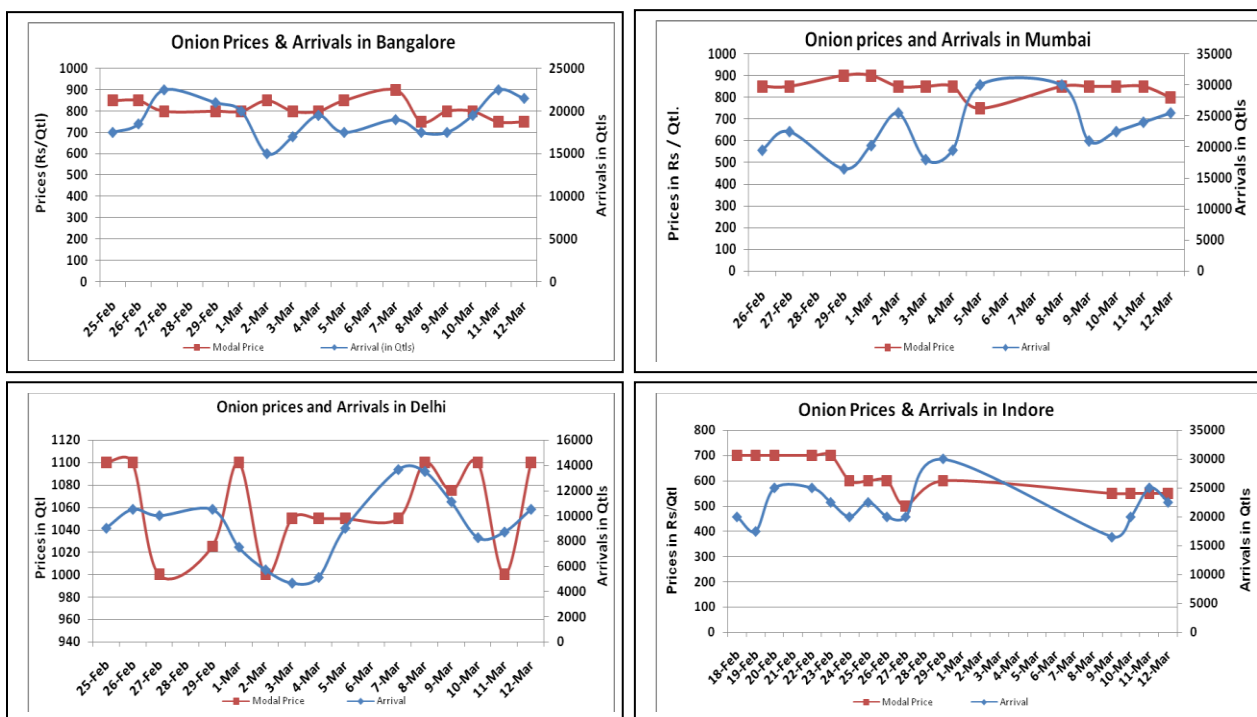


### Onion Fundamentals:

- Mixed sentiment witnessed in Onion market on Saturday. Due to weekend buyers reported inactive today.
- In A.P, total targeted area for Rabi season is approximately is 5054 hectares. As on 09.03 .2016, approximately 6188 hectare of area is sown compared to corresponding year's area 3549 hectares.
- In Delhi, modal prices are trading at Rs 1050 quintal compared to prices of Rs 1500/ quintal during corresponding month of 2015.
- In M.P, fresh crop is arriving in market from local region only. According to trade sources Rabi acreage is higher this year compared to corresponding year's 91387 hectares.
- In Maharashtra, as per State Government Rabi acreage is expected to be 192802 hectares. Full fledge Rabi crop is expected to arrive in market after mid March though smaller quantity already arriving in market.

### Onion wholesale Prices & Arrivals in Producing & Consumption Centers



(Source: AGRIWATCH)

Note: The above graph is made on data collected by Agriwatch through private sources because Agmarknet data are not consistent and lots of gaps in reporting.

### Onion Prices & Arrivals in Major Mandis as on 12.Mar.2016

Mandis	Lasalgaon	Pimpalgaon	Niphad	Pune	Indore	Delhi	Bangalore
Price (Rs/Qtl)	Closed	Closed	Closed	Closed	300-800	800-1300	500-1000
Arrivals (Qtl)	Closed	Closed	Closed	Closed	22500	10500	21500

### Onion Prices & Arrivals in Major Mandis as on 11.Mar.2016

Mandis	Lasalgaon	Pimpalgaon	Niphad	Pune	Indore	Delhi	Bangalore
Price (Rs/Qtl)	500-850	650-700	Closed	700-1000	400-800	850-1200	500-1000
Arrivals (Qtl)	15000	10000	Closed	13500	25000	8700	22500

(Source: AGRIWATCH)

### Wholesale and Retail Prices in Major Markets:

Wholesale Prices											Retail Prices
Prices in Rs/Quintal	12.Mar.2016#			11.Mar.2016#			Agmarknet 11.Mar.2016*			Consumer Affairs 11 Mar.	Consumer Affairs 11 Mar.
Market	Min. Price	Max. Price	Modal Price	Min. Price	Max. Price	Modal Price	Min. Price	Max. Price	Modal Price	Modal Price	Modal Price
Delhi	800	1300	1100	850	1200	1000	700	1300	939	950	2400
Lasalgaon	Closed	Closed	Closed	500	850	700	-	-	-	-	-
Pimpalgaon	Closed	Closed	Closed	650	700	675	-	-	-	-	-
Pune	Closed	Closed	Closed	700	1000	850	400	850	650	-	-
Mumbai	700	900	800	700	1000	850	750	1050	900	900	2200
Indore	300	800	550	400	800	550	100	875	625	1000	1200
Bangalore	500	1000	750	500	1000	750	800	1100	950	-	-
Ahmednagar	750	900	750	700	800	750	-	-	-	-	-
Solapur	300	800	550	200	850	550	100	900	450	-	-

(Source: #Agriwatch,\*Agmarknet)

### Onion Arrivals in Major Markets:

Arrivals in Qtls	Ahmedabad	Pune	Mumbai	Delhi	Indore	Bangalore	Ahmednagar	Solapur
12 <sup>th</sup> Feb*	7643	Closed	25500	10500	22500	21500	10000	22500
11 <sup>th</sup> Feb*	4096	13500	24000	8700	25000	22500	15000	13000
11 <sup>th</sup> Feb#	4096	25540	12550	5989	6991	22530	-	21780

(Source: \*Agriwatch, # Agmarknet)

### Disclaimer

The information contained in this document has been compiled by Agriwatch from sources believed to be reliable, such as NHB, Agmarknet, etc. and directly from traders in mandis. However, users of this data are requested to use the information with due caution and crosscheck with other sources. This document is not, and should not be construed as an offer to sell or buy any commodities. This document may not be reproduced, distributed or published without the express consent of SFAC