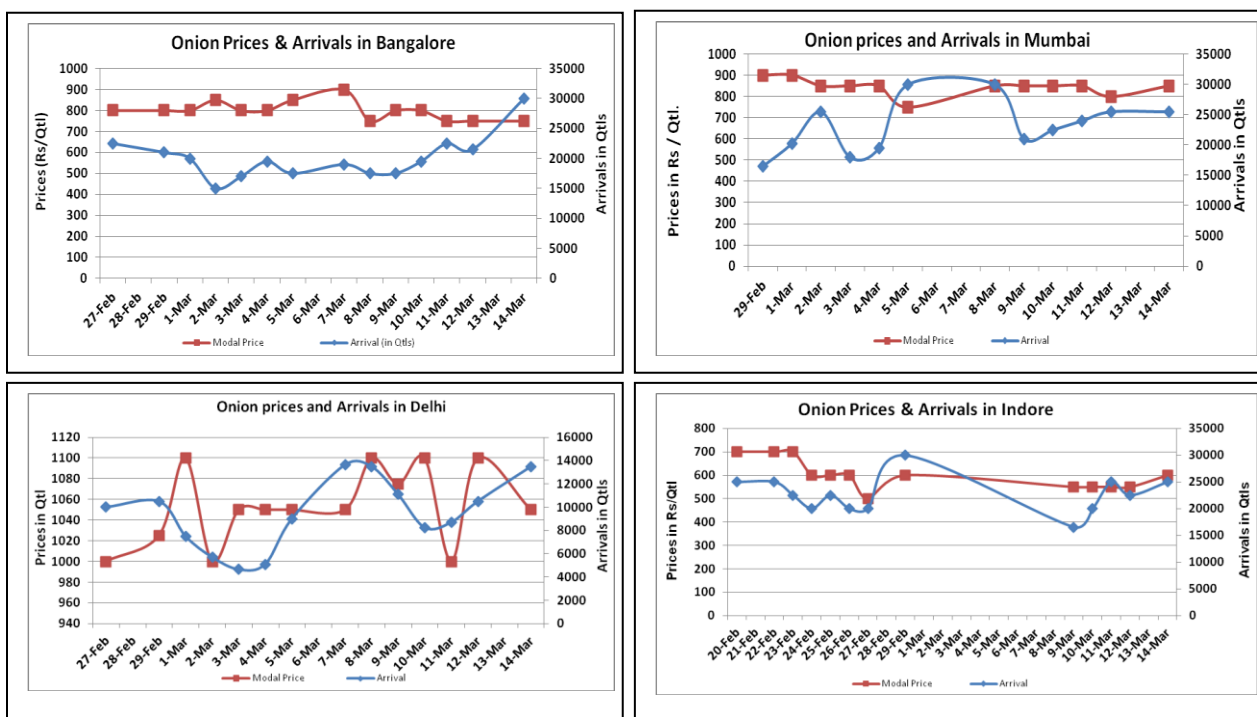


Onion Fundamentals:

- In Delhi, modal prices are trading at Rs 1050 quintal compared to prices of Rs 1500/ quintal during corresponding month of 2015.
- In Maharashtra, Rabi acreage is higher and expected to be 1.90 lakh hectares compared to corresponding year of 2014, 1.85 lakh hectares.
- All India Rabi Production is estimated to be 105-110 lakh tons compared to corresponding season of 2014-15, 103.76 lakh tons.
- In Lasalgaon, fresh crop has started arriving in market and prices are trading in the range of Rs 600-Rs 900/ quintal compared to corresponding year of 2015, Rs 1350/ quintal during same period.

Onion wholesale Prices & Arrivals in Producing & Consumption Centers



(Source: AGRIWATCH)

Note: The above graph is made on data collected by Agriwatch through private sources because Agmarknet data are not consistent and lots of gaps in reporting.

Onion Prices & Arrivals in Major Mandis as on 14.Mar.2016

Mandis	Lasalgaon	Pimpalgaon	Niphad	Pune	Indore	Delhi	Bangalore
Price (Rs/Qtl)	500-800	650-750	300-650	600-900	300-900	900-1250	500-1000
Arrivals (Qtl)	12000	10000	8000	12750	25000	13500	30000

Onion Prices & Arrivals in Major Mandis as on 12.Mar.2016

Mandis	Lasalgaon	Pimpalgaon	Niphad	Pune	Indore	Delhi	Bangalore
Price (Rs/Qtl)	Closed	Closed	Closed	Closed	300-800	800-1300	500-1000
Arrivals (Qtl)	Closed	Closed	Closed	Closed	22500	10500	21500

(Source: AGRIWATCH)

Wholesale and Retail Prices in Major Markets:

Wholesale Prices											Retail Prices
Prices in Rs/Quintal	14.Mar.2016#			12.Mar.2016#			Agmarknet 12.Mar.2016*			Consumer Affairs 14 Mar.	Consumer Affairs 14 Mar.
Market	Min. Price	Max. Price	Modal Price	Min. Price	Max. Price	Modal Price	Min. Price	Max. Price	Modal Price	Modal Price	Modal Price
Delhi	900	1250	1050	800	1300	1100	-	-	-	975	2400
Lasalgaon	500	800	700	Closed	Closed	Closed	-	-	-	-	-
Pimpalgaon	650	750	670	Closed	Closed	Closed	-	-	-	-	-
Pune	600	900	750	Closed	Closed	Closed	-	-	-	-	-
Mumbai	700	1000	850	700	900	800	-	-	-	900	2300
Indore	300	900	600	300	800	550	100	875	625	1000	1200
Bangalore	500	1000	750	500	1000	750	-	-	-	-	-
Ahmednagar	700	800	750	750	900	750	-	-	-	-	-
Solapur	300	800	550	300	800	550	100	950	475	-	-

(Source: #Agriwatch,*Agmarknet)

Onion Arrivals in Major Markets:

Arrivals in Qtls	Ahmedabad	Pune	Mumbai	Delhi	Indore	Bangalore	Ahmednagar	Solapur
12 th Feb*	7630	12750	25500	13500	25000	30000	12500	15000
12 th Feb*	7643	Closed	25500	10500	22500	21500	10000	22500
12 th Feb#	7643	-	-	-	5250	-	-	21740

(Source: *Agriwatch, # Agmarknet)

Disclaimer

The information contained in this document has been compiled by Agriwatch from sources believed to be reliable, such as NHB, Agmarknet, etc. and directly from traders in mandis. However, users of this data are requested to use the information with due caution and crosscheck with other sources. This document is not, and should not be construed as an offer to sell or buy any commodities. This document may not be reproduced, distributed or published without the express consent of SFAC