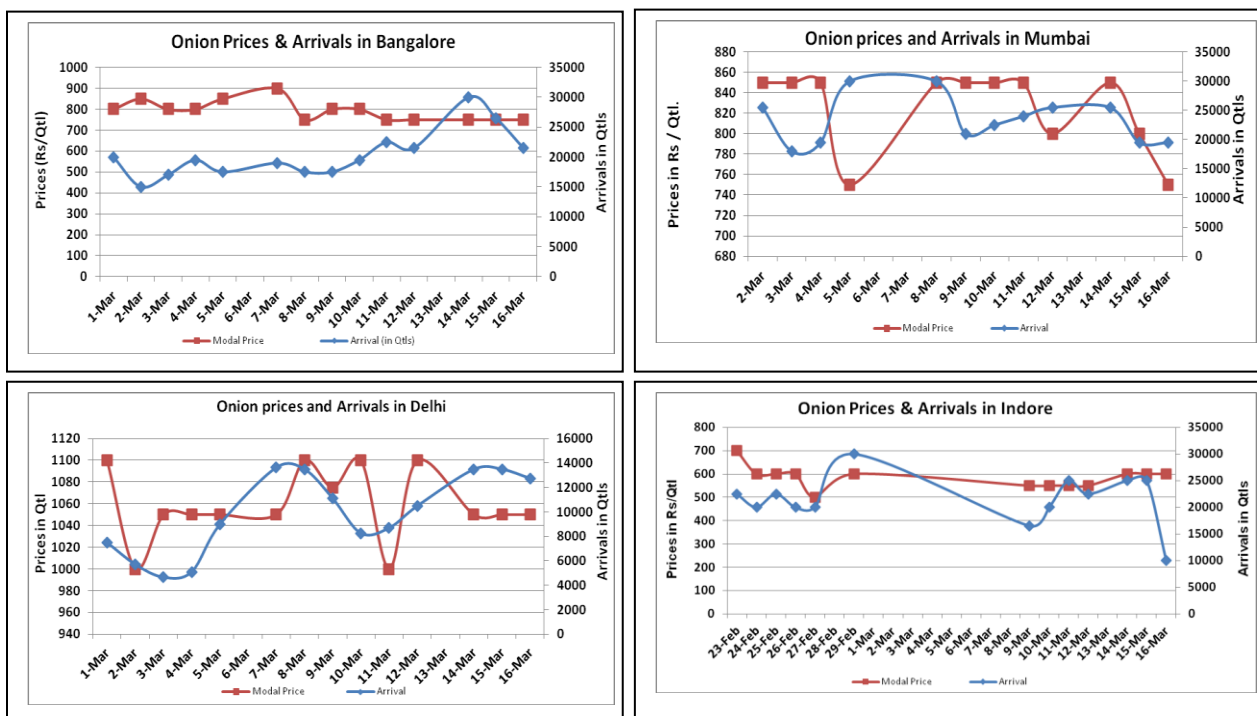


### Onion Fundamentals:

- In M.P, rabi crop is expected to be higher than corresponding year of 2015 which was approximately 91000 hectares.
- In Delhi, modal prices are trading at Rs 1062/ quintal compared to prices of 2015, Rs 1625/ quintal during corresponding month of 2015.
- In Lasalgaon, fresh crop has started arriving in market and prices are trading in the range of Rs 600-Rs 900/ quintal compared to corresponding year of 2015, Rs 1350/ quintal during same period.
- Onion prices are expected to trade on lower side only because of higher expectation of rabi crop this year.

### Onion wholesale Prices & Arrivals in Producing & Consumption Centers



(Source: AGRIWATCH)

Note: The above graph is made on data collected by Agriwatch through private sources because Agmarknet data are not consistent and lots of gaps in reporting.

### Onion Prices & Arrivals in Major Mandis as on 16.Mar.2016

Mandis	Lasalgaon	Pimpalgaon	Niphad	Pune	Indore	Delhi	Bangalore
Price (Rs/Qtl)	700-750	600-700	350-632	600-900	300-900	800-1200	500-1000
Arrivals (Qtl)	14000	7000	8000	15000	10000	12750	21500

### Onion Prices & Arrivals in Major Mandis as on 15.Mar.2016

Mandis	Lasalgaon	Pimpalgaon	Niphad	Pune	Indore	Delhi	Bangalore
Price (Rs/Qtl)	600-800	650-700	Closed	500-900	300-800	800-1200	500-1000
Arrivals (Qtl)	12000	8000	Closed	18750	25000	13500	26500

(Source: AGRIWATCH)

## Wholesale and Retail Prices in Major Markets:

Wholesale Prices											Retail Prices
Prices in Rs/Quintal	16.Mar.2016#			15.Mar.2016#			Agmarknet 15.Mar.2016*			Consumer Affairs 16 Mar.	Consumer Affairs 16 Mar.
Market	Min. Price	Max. Price	Modal Price	Min. Price	Max. Price	Modal Price	Min. Price	Max. Price	Modal Price	Modal Price	Modal Price
Delhi	800	1200	1050	800	1200	1050	625	1200	971	NR	2400
Lasalgaon	700	750	700	600	800	700	-	-	-	-	-
Pimpalgaon	600	700	650	650	700	670	-	-	-	-	-
Pune	600	900	750	500	900	700	400	800	700	-	-
Mumbai	600	900	750	700	900	800	700	1000	850	1000	2200
Indore	300	900	600	300	800	600	-	-	-	600	1200
Bangalore	500	1000	750	500	1000	750	700	1000	850	-	-
Ahmednagar	700	800	750	700	800	750	-	-	-	-	-
Solapur	200	800	500	200	800	500	100	1000	500	-	-

(Source: #Agriwatch,\*Agmarknet)

## Onion Arrivals in Major Markets:

Arrivals in Qtls	Ahmedabad	Pune	Mumbai	Delhi	Indore	Bangalore	Ahmednagar	Solapur
16 <sup>th</sup> Feb*	6488	15000	19500	12750	10000	21500	12500	13000
15 <sup>th</sup> Feb*	7110	18750	19500	13500	25000	26500	12500	15000
15 <sup>th</sup> Feb#	6381	20210	9800	14193	-	23280	-	20150

(Source: \*Agriwatch, # Agmarknet)

### Disclaimer

The information contained in this document has been compiled by Agriwatch from sources believed to be reliable, such as NHB, Agmarknet, etc. and directly from traders in mandis. However, users of this data are requested to use the information with due caution and crosscheck with other sources. This document is not, and should not be construed as an offer to sell or buy any commodities. This document may not be reproduced, distributed or published without the express consent of SFAC