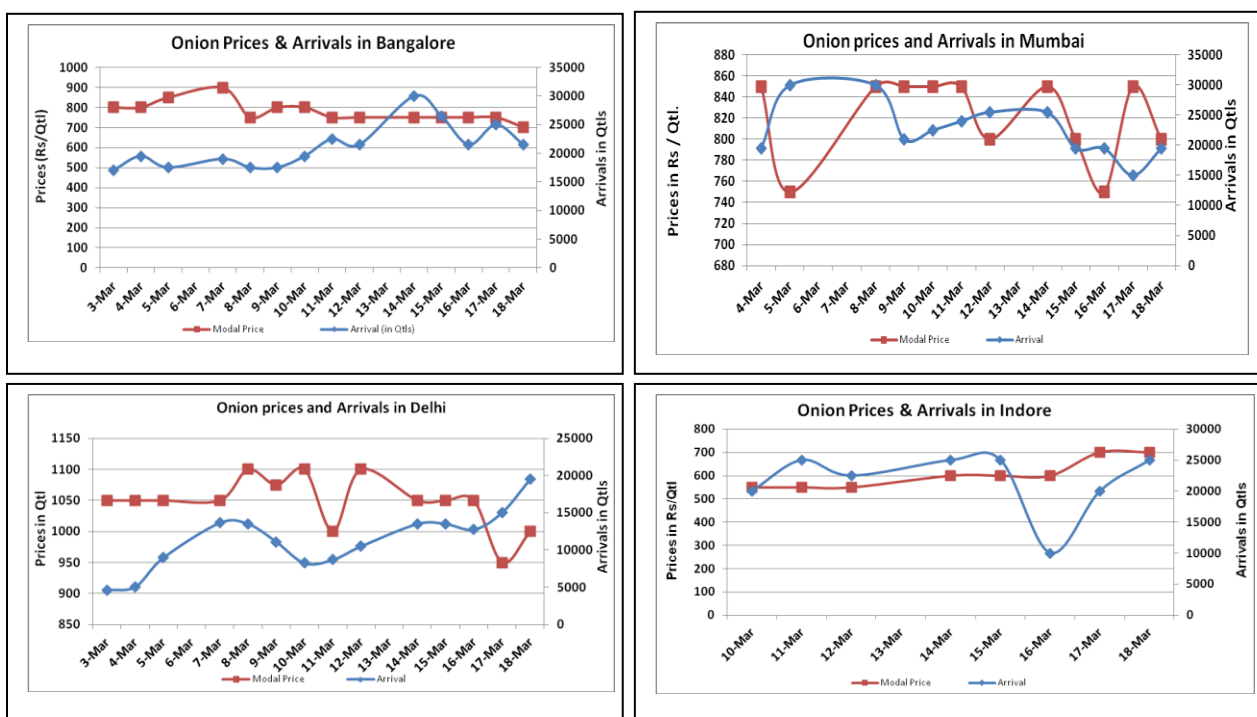


Onion Fundamentals:

- In Delhi, modal prices are trading at Rs 1033 quintal compared to prices of 2015, Rs 1470/ quintal during corresponding month of 2015.
- In Lasalgaon, prices are trading in the range of Rs 600-Rs 900/ quintal compared to corresponding year of 2015, Rs 1100-Rs 1150/ quintal during same period.
- In M.P according to trade sources onion is arriving in market from local region and Maharashtra which are contributing approximately 75% and 25% respectively. This year Rabi crop in M.P is expected to be higher.
- In Maharashtra, Rabi acreage is higher and expected to be 1.90 lakh hectares compared to corresponding year of 2014, 1.85 lakh hectares.

Onion wholesale Prices & Arrivals in Producing & Consumption Centers



(Source: AGRIWATCH)

Note: The above graph is made on data collected by Agriwatch through private sources because Agmarknet data are not consistent and lots of gaps in reporting.

Onion Prices & Arrivals in Major Mandis as on 18.Mar.2016

Mandis	Lasalgaon	Pimpalgaon	Niphad	Pune	Indore	Delhi	Bangalore
Price (Rs/Qtl)	500-800	650-700	Closed	550-800	300-900	800-1200	500-900
Arrivals (Qtl)	13000	7000	Closed	22500	25000	19500	21500

Onion Prices & Arrivals in Major Mandis as on 17.Mar.2016

Mandis	Lasalgaon	Pimpalgaon	Niphad	Pune	Indore	Delhi	Bangalore
Price (Rs/Qtl)	500-800	650-700	350-750	600-900	300-900	700-1100	500-1000
Arrivals (Qtl)	15000	8000	6000	18750	20000	15000	25000

(Source: AGRIWATCH)

Wholesale and Retail Prices in Major Markets:

Wholesale Prices											Retail Prices
Prices in Rs/Quintal	18.Mar.2016#			17.Mar.2016#			Agmarknet 17.Mar.2016*			Consumer Affairs 18 Mar.	Consumer Affairs 18 Mar.
Market	Min. Price	Max. Price	Modal Price	Min. Price	Max. Price	Modal Price	Min. Price	Max. Price	Modal Price	Modal Price	Modal Price
Delhi	800	1200	1000	700	1100	950	-	-	-	950	2400
Lasalgaon	500	800	650	500	800	650	350	761	701	-	-
Pimpalgaon	650	700	650	650	700	650	-	-	-	-	-
Pune	550	800	675	600	900	750	400	800	700	-	-
Mumbai	700	900	800	700	1000	850	700	950	850	825	2000
Indore	300	900	700	300	900	700	-	-	-	1100	1300
Bangalore	500	900	700	500	1000	750	-	-	-	-	-
Ahmednagar	600	800	700	600	800	700	-	-	-	-	-
Solapur	200	800	500	200	800	500	100	850	450	-	-

(Source: #Agriwatch,*Agmarknet)

Onion Arrivals in Major Markets:

Arrivals in Qtls	Ahmedabad	Pune	Mumbai	Delhi	Indore	Bangalore	Ahmednagar	Solapur
18 th Feb*	6377	22500	19500	19500	25000	21500	15000	14000
17 th Feb*	6505	18750	15000	15000	20000	25000	15000	15000
17 th Feb#	6505	18270	7450	-	-	-	-	20350

(Source: *Agriwatch, # Agmarknet)

Disclaimer

The information contained in this document has been compiled by Agriwatch from sources believed to be reliable, such as NHB, Agmarknet, etc. and directly from traders in mandis. However, users of this data are requested to use the information with due caution and crosscheck with other sources. This document is not, and should not be construed as an offer to sell or buy any commodities. This document may not be reproduced, distributed or published without the express consent of SFAC