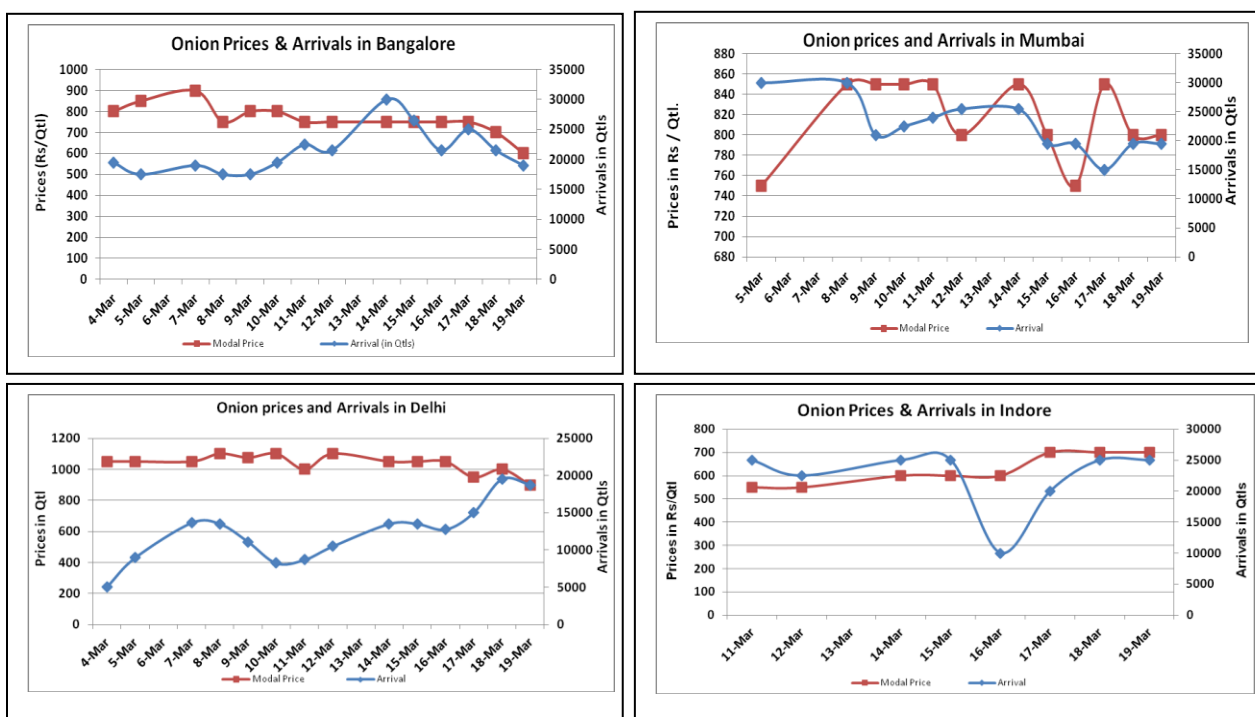


Onion Fundamentals:

- In Delhi, modal prices are trading at Rs 1033 quintal compared to prices of 2015, Rs 1470/ quintal during corresponding month of 2015.
- In Lasalgaon, prices are trading in the range of Rs 600-Rs 900/ quintal compared to corresponding year of 2015, Rs 1100-Rs 1150/ quintal during same period.
- In M.P according to trade sources onion is arriving in market from local region and Maharashtra which are contributing approximately 75% and 25% respectively. This year Rabi crop in M.P is expected to be higher.
- In Maharashtra, Rabi acreage is higher and expected to be 1.90 lakh hectares compared to corresponding year of 2014, 1.85 lakh hectares.

Onion wholesale Prices & Arrivals in Producing & Consumption Centers



(Source: AGRIWATCH)

Note: The above graph is made on data collected by Agriwatch through private sources because Agmarknet data are not consistent and lots of gaps in reporting.

Onion Prices & Arrivals in Major Mandis as on 19.Mar.2016

Mandis	Lasalgaon	Pimpalgaon	Niphad	Pune	Indore	Delhi	Bangalore
Price (Rs/Qtl)	Closed	Closed	300-730	Closed	300-900	700-1000	400-800
Arrivals (Qtl)	Closed	Closed	5000	Closed	25000	18750	19000

Onion Prices & Arrivals in Major Mandis as on 18.Mar.2016

Mandis	Lasalgaon	Pimpalgaon	Niphad	Pune	Indore	Delhi	Bangalore
Price (Rs/Qtl)	500-800	650-700	Closed	550-800	300-900	800-1200	500-900
Arrivals (Qtl)	13000	7000	Closed	22500	25000	19500	21500

(Source: AGRIWATCH)

Wholesale and Retail Prices in Major Markets:

Wholesale Prices											Retail Prices
Prices in Rs/Quintal	19.Mar.2016#			18.Mar.2016#			Agmarknet 18.Mar.2016*			Consumer Affairs 18 Mar.	Consumer Affairs 18 Mar.
Market	Min. Price	Max. Price	Modal Price	Min. Price	Max. Price	Modal Price	Min. Price	Max. Price	Modal Price	Modal Price	Modal Price
Delhi	700	1000	900	800	1200	1000	700	1175	952	950	2400
Lasalgaon	Closed	Closed	Closed	500	800	650	500	840	751	-	-
Pimpalgaon	Closed	Closed	Closed	650	700	650	-	-	-	-	-
Pune	Closed	Closed	Closed	550	800	675	-	-	-	-	-
Mumbai	700	900	19500	700	900	800	650	900	800	825	2000
Indore	300	900	25000	300	900	700	-	-	-	1100	1300
Bangalore	400	800	19000	500	900	700	600	900	750	-	-
Ahmednagar	600	800	15000	600	800	700	-	-	-	-	-
Solapur	200	800	13500	200	800	500	100	850	450	-	-

(Source: #Agriwatch,*Agmarknet)

Onion Arrivals in Major Markets:

Arrivals in Qtls	Ahmedabad	Pune	Mumbai	Delhi	Indore	Bangalore	Ahmednagar	Solapur
19 th Feb*	7054	Closed	19500	18750	25000	19000	15000	13500
18 th Feb*	6377	22500	19500	19500	25000	21500	15000	14000
18 th Feb#	6377	-	10100	13800	-	21560	-	17030

(Source: *Agriwatch, # Agmarknet)

Disclaimer

The information contained in this document has been compiled by Agriwatch from sources believed to be reliable, such as NHB, Agmarknet, etc. and directly from traders in mandis. However, users of this data are requested to use the information with due caution and crosscheck with other sources. This document is not, and should not be construed as an offer to sell or buy any commodities. This document may not be reproduced, distributed or published without the express consent of SFAC