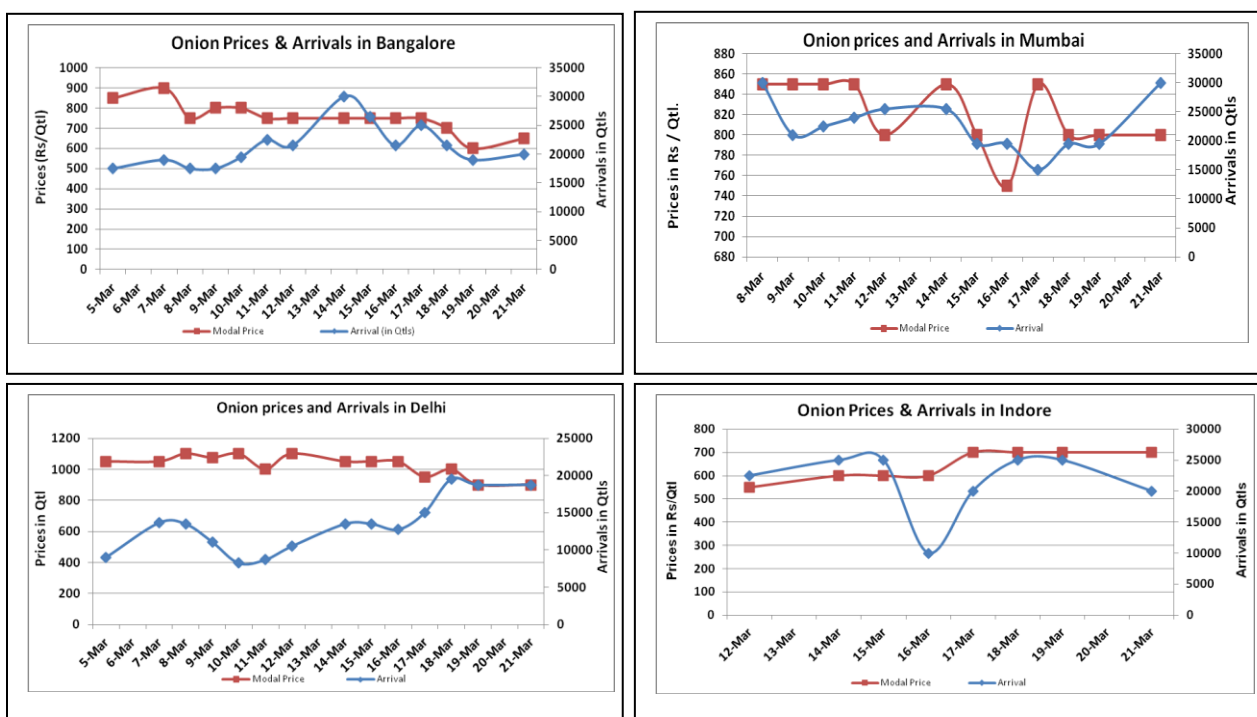


### Onion Fundamentals:

- In Delhi, modal prices are trading at Rs 1033 quintal compared to prices of 2015, Rs 1470/ quintal during corresponding month of 2015.
- In Lasalgaon, prices are trading in the range of Rs 600-Rs 900/ quintal compared to corresponding year of 2015, Rs 1100-Rs 1150/ quintal during same period.
- In M.P according to trade sources onion is arriving in market from local region and Maharashtra which are contributing approximately 75% and 25% respectively. This year Rabi crop in M.P is expected to be higher.
- In Maharashtra, Rabi acreage is higher and expected to be 1.90 lakh hectares compared to corresponding year of 2014, 1.85 lakh hectares.

### Onion wholesale Prices & Arrivals in Producing & Consumption Centers



(Source: AGRIWATCH)

Note: The above graph is made on data collected by Agriwatch through private sources because Agmarknet data are not consistent and lots of gaps in reporting.

### Onion Prices & Arrivals in Major Mandis as on 21.Mar.2016

Mandis	Lasalgaon	Pimpalgaon	Niphad	Pune	Indore	Delhi	Bangalore
Price (Rs/Qtl)	500-800	700-800	300-800	550-800	300-800	700-1100	400-900
Arrivals (Qtl)	11000	10000	4000	12000	20000	18750	20000

### Onion Prices & Arrivals in Major Mandis as on 19.Mar.2016

Mandis	Lasalgaon	Pimpalgaon	Niphad	Pune	Indore	Delhi	Bangalore
Price (Rs/Qtl)	Closed	Closed	300-730	Closed	300-900	700-1000	400-800
Arrivals (Qtl)	Closed	Closed	5000	Closed	25000	18750	19000

(Source: AGRIWATCH)

### Wholesale and Retail Prices in Major Markets:

Wholesale Prices											Retail Prices
Prices in Rs/Quintal	21.Mar.2016#			19.Mar.2016#			Agmarknet 19.Mar.2016*			Consumer Affairs 21 Mar.	Consumer Affairs 21 Mar.
Market	Min. Price	Max. Price	Modal Price	Min. Price	Max. Price	Modal Price	Min. Price	Max. Price	Modal Price	Modal Price	Modal Price
Delhi	700	1100	900	700	1000	900	700	1175	952	925	2400
Lasalgaon	500	800	650	Closed	Closed	Closed	-	-	-	-	-
Pimpalgaon	700	800	650	Closed	Closed	Closed	300	885	711	-	-
Pune	550	800	675	Closed	Closed	Closed	-	-	-	-	-
Mumbai	700	900	800	700	900	19500	600	950	862	775	1800
Indore	300	800	700	300	900	25000	-	-	-	1100	1300
Bangalore	400	900	650	400	800	19000	700	900	800	-	-
Ahmednagar	750	900	700	600	800	15000	-	-	-	-	-
Solapur	200	800	500	200	800	13500	50	800	400	-	-

(Source: #Agriwatch,\*Agmarknet)

### Onion Arrivals in Major Markets:

Arrivals in Qtls	Ahmedabad	Pune	Mumbai	Delhi	Indore	Bangalore	Ahmednagar	Solapur
21 <sup>st</sup> Feb*	10364	12000	30000	18750	20000	20000	17500	14000
20 <sup>th</sup> Feb*	7054	Closed	19500	18750	25000	19000	15000	13500
20 <sup>th</sup> Feb#	7054	30	10800	17130	-	21590	-	17970

(Source: \*Agriwatch, # Agmarknet)

#### Disclaimer

The information contained in this document has been compiled by Agriwatch from sources believed to be reliable, such as NHB, Agmarknet, etc. and directly from traders in mandis. However, users of this data are requested to use the information with due caution and crosscheck with other sources. This document is not, and should not be construed as an offer to sell or buy any commodities. This document may not be reproduced, distributed or published without the express consent of SFAC