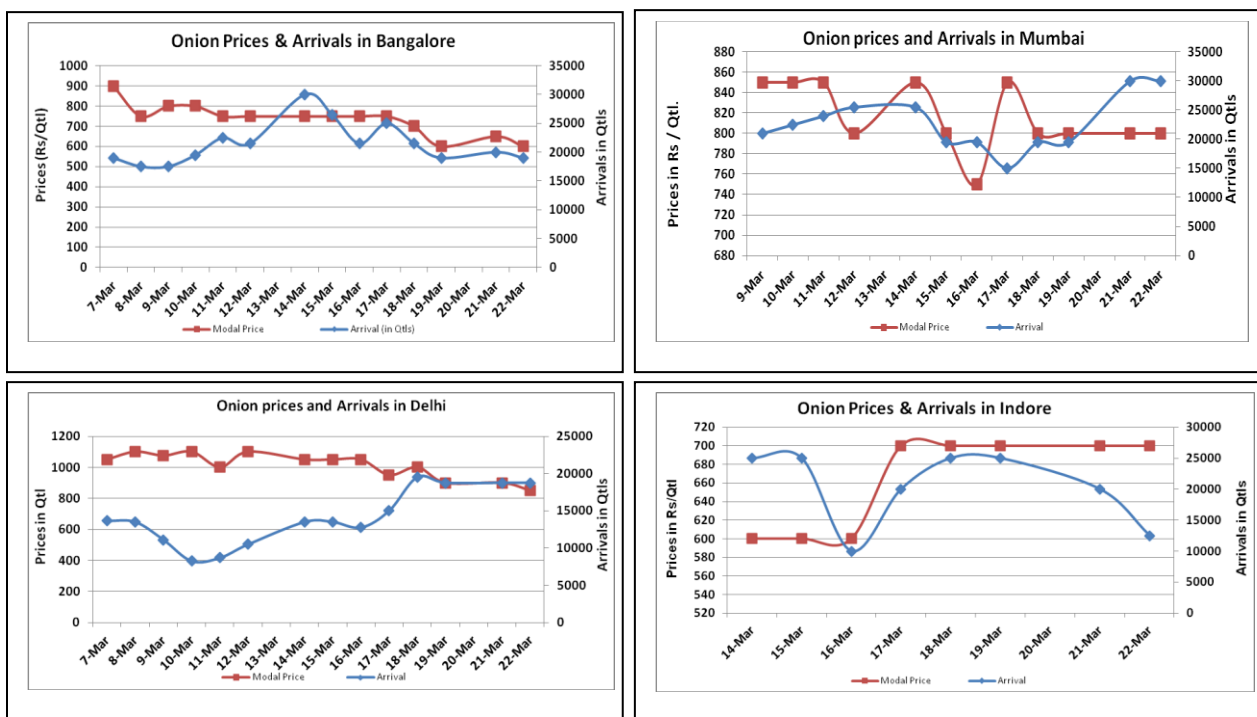


Onion Fundamentals:

- In Madhya Pradesh Rabi onion acreage is expected to be higher by 53.03% against last year acreage of 91387 hectares. This year Rabi acreage estimate is approximately 139849.53 hectares.
- In M.P, acreage is increased so drastically because of higher onion prices last year, good weather condition and soybean farmers whose crop was damaged they shifted towards onion crop.
- In Delhi, modal prices are trading at Rs 1033 /quintal compared to prices of 2015, Rs 1470/ quintal during corresponding month of 2015.
- In Lasalgaon, prices are trading at its lowest in a range of Rs 500-Rs 800/ quintal because of higher rabi production estimates in Maharashtra.

Onion wholesale Prices & Arrivals in Producing & Consumption Centers



(Source: AGRIWATCH)

Note: The above graph is made on data collected by Agriwatch through private sources because Agmarknet data are not consistent and lots of gaps in reporting.

Onion Prices & Arrivals in Major Mandis as on 22.Mar.2016

Mandis	Lasalgaon	Pimpalgaon	Niphad	Pune	Indore	Delhi	Bangalore
Price (Rs/Qtl)	500-800	650-700	300-825	500-750	300-900	600-1100	400-800
Arrivals (Qtl)	11000	6000	4500	12000	12500	18750	19000

Onion Prices & Arrivals in Major Mandis as on 21.Mar.2016

Mandis	Lasalgaon	Pimpalgaon	Niphad	Pune	Indore	Delhi	Bangalore
Price (Rs/Qtl)	500-800	700-800	300-800	550-800	300-800	700-1100	400-900
Arrivals (Qtl)	11000	10000	4000	12000	20000	18750	20000

(Source: AGRIWATCH)

Wholesale and Retail Prices in Major Markets:

Wholesale Prices											Retail Prices
Prices in Rs/Quintal	22.Mar.2016#			21.Mar.2016#			Agmarknet 21.Mar.2016*			Consumer Affairs 22 Mar.	Consumer Affairs 22 Mar.
Market	Min. Price	Max. Price	Modal Price	Min. Price	Max. Price	Modal Price	Min. Price	Max. Price	Modal Price	Modal Price	Modal Price
Delhi	600	1100	850	700	1100	900	500	1100	919	925	2400
Lasalgaon	500	800	650	500	800	650	500	940	850	-	-
Pimpalgaon	650	700	650	700	800	650	350	927	701	-	-
Pune	500	750	625	550	800	675	400	750	600	-	-
Mumbai	700	900	800	700	900	800	700	1000	800	850	2000
Indore	300	900	700	300	800	700	-	-	-	NR	NR
Bangalore	400	800	600	400	900	650	700	800	750	-	-
Ahmednagar	Closed	Closed	Closed	750	900	700	-	-	-	-	-
Solapur	200	700	450	200	800	500	50	850	400	-	-

(Source: #Agriwatch,*Agmarknet)

Onion Arrivals in Major Markets:

Arrivals in Qtls	Ahmedabad	Pune	Mumbai	Delhi	Indore	Bangalore	Ahmednagar	Solapur
22 nd Feb*	4971	12000	30000	18750	12500	19000	Closed	9000
21 th Feb*	10364	12000	30000	18750	20000	20000	17500	14000
21 th Feb#	10364	16370	15350	3811	-	20550	-	12410

(Source: *Agriwatch, # Agmarknet)

Disclaimer

The information contained in this document has been compiled by Agriwatch from sources believed to be reliable, such as NHB, Agmarknet, etc. and directly from traders in mandis. However, users of this data are requested to use the information with due caution and crosscheck with other sources. This document is not, and should not be construed as an offer to sell or buy any commodities. This document may not be reproduced, distributed or published without the express consent of SFAC