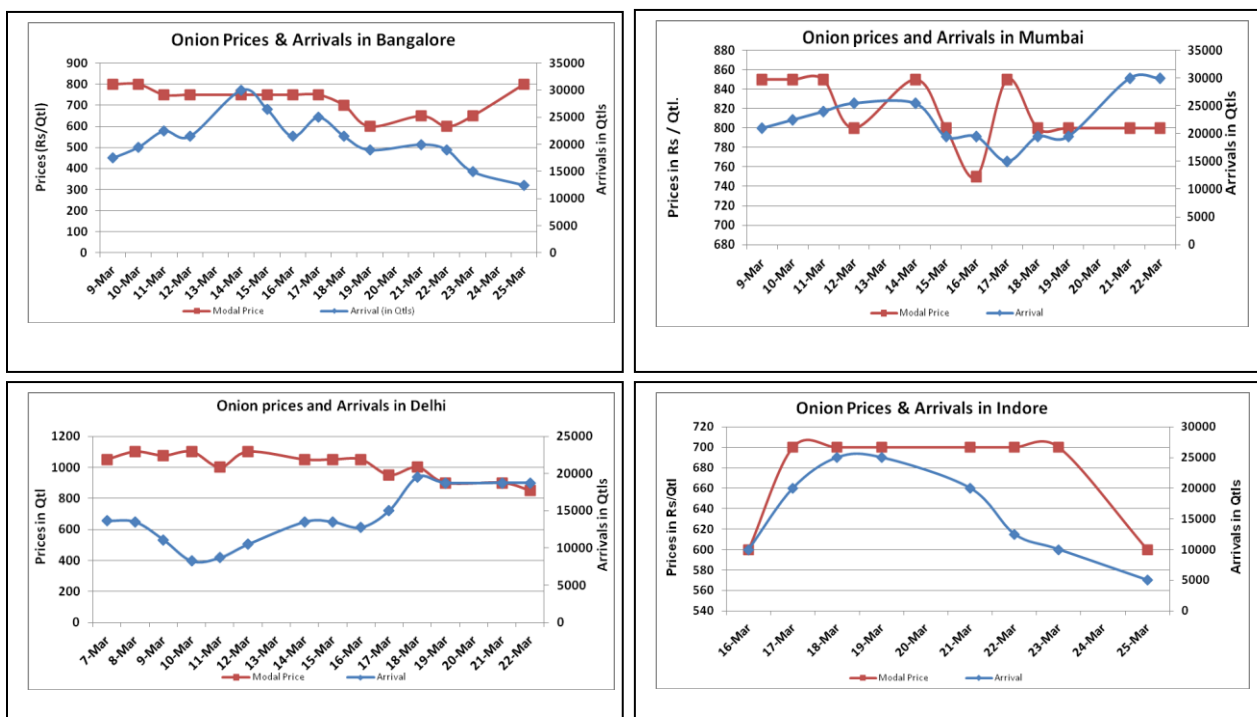


Onion Fundamentals:

- In Delhi, modal prices are trading at Rs 870 /quintal compared to prices of 2015, Rs 1000/ quintal during corresponding month of 2015.
- In M.P, average Rabi onion yield is calculated to be 23.91 ton/Ha which is 16.1% higher compared to corresponding year of 2014-15. However, last year average yield estimated to be 20.60 ton/Ha.
- In M.P and Maharashtra, Rabi onion acreage is expected to be higher compared to corresponding year of 2015.
- In M.P, lower arrival reported because of Holi festival. Arrivals are expected to be normal in coming days.
- In Lasalgaon, mandi is expected to open on 3rd of April amid festival holidays and March closing. So supply of onion may be disrupted for next few days and its impact would be seen on onion prices

Onion wholesale Prices & Arrivals in Producing & Consumption Centers



(Source: AGRIWATCH)

Note: The above graph is made on data collected by Agriwatch through private sources because Agmarknet data are not consistent and lots of gaps in reporting.

Onion Prices & Arrivals in Major Mandis as on 25.Mar.2016

| Mandis | Lasalgaon | Pimpalgaon | Niphad | Pune | Indore | Delhi | Bangalore |
|----------------|-----------|------------|--------|---------|---------|----------|-----------|
| Price (Rs/Qtl) | Closed | 900-950 | Closed | 700-900 | 300-800 | 600-1100 | 500-1100 |
| Arrivals (Qtl) | Closed | 1900 | Closed | 15000 | 5000 | 7350 | 12500 |

Onion Prices & Arrivals in Major Mandis as on 23.Mar.2016

| Mandis | Lasalgaon | Pimpalgaon | Niphad | Pune | Indore | Delhi | Bangalore |
|----------------|-----------|------------|--------|--------|---------|----------|-----------|
| Price (Rs/Qtl) | Closed | 800-900 | Closed | Closed | 300-900 | 600-1100 | 400-900 |
| Arrivals (Qtl) | Closed | 1800 | Closed | Closed | 10000 | 9750 | 15000 |

(Source: AGRIWATCH)

Wholesale and Retail Prices in Major Markets:

| Wholesale Prices | | | | | | | | | | | Retail Prices |
|----------------------|--------------|------------|-------------|--------------|------------|-------------|------------------------|------------|-------------|--------------------------|--------------------------|
| Prices in Rs/Quintal | 25.Mar.2016# | | | 23.Mar.2016# | | | Agmarknet 23.Mar.2016* | | | Consumer Affairs 25 Mar. | Consumer Affairs 25 Mar. |
| Market | Min. Price | Max. Price | Modal Price | Min. Price | Max. Price | Modal Price | Min. Price | Max. Price | Modal Price | Modal Price | Modal Price |
| Delhi | 600 | 1100 | 800 | 600 | 1100 | 900 | - | - | - | 925 | 2400 |
| Lasalgaon | Closed | Closed | Closed | Closed | Closed | Closed | - | - | - | - | - |
| Pimpalgaon | 900 | 950 | 670 | 800 | 900 | 670 | 300 | 943 | 721 | - | - |
| Pune | 700 | 900 | 800 | Closed | Closed | Closed | 500 | 850 | 650 | - | - |
| Mumbai | 700 | 900 | 800 | Closed | Closed | Closed | - | - | - | NR | 1800 |
| Indore | 300 | 800 | 600 | 300 | 900 | 700 | 150 | 875 | 625 | 1100 | 1300 |
| Bangalore | 500 | 1100 | 800 | 400 | 900 | 650 | 700 | 800 | 750 | - | - |
| Ahmednagar | Closed | Closed | Closed | Closed | Closed | Closed | - | - | - | - | - |
| Solapur | Closed | Closed | Closed | Closed | Closed | Closed | 50 | 1040 | 500 | - | - |

(Source: #Agriwatch,*Agmarknet)

Onion Arrivals in Major Markets:

| Arrivals in Qtls | Ahmedabad | Pune | Mumbai | Delhi | Indore | Bangalore | Ahmednagar | Solapur |
|-----------------------|-----------|--------|--------|-------|--------|-----------|------------|---------|
| 25 rd Feb* | 3638 | 15000 | 21000 | 7350 | 5000 | 12500 | Closed | Closed |
| 23 rd Feb* | 4960 | Closed | Closed | 9750 | 10000 | 15000 | Closed | Closed |
| 23 rd Feb# | 6878 | 12030 | - | - | 1310 | 1494 | - | 8800 |

(Source: *Agriwatch, # Agmarknet)

Disclaimer

The information contained in this document has been compiled by Agriwatch from sources believed to be reliable, such as NHB, Agmarknet, etc. and directly from traders in mandis. However, users of this data are requested to use the information with due caution and crosscheck with other sources. This document is not, and should not be construed as an offer to sell or buy any commodities. This document may not be reproduced, distributed or published without the express consent of SFAC