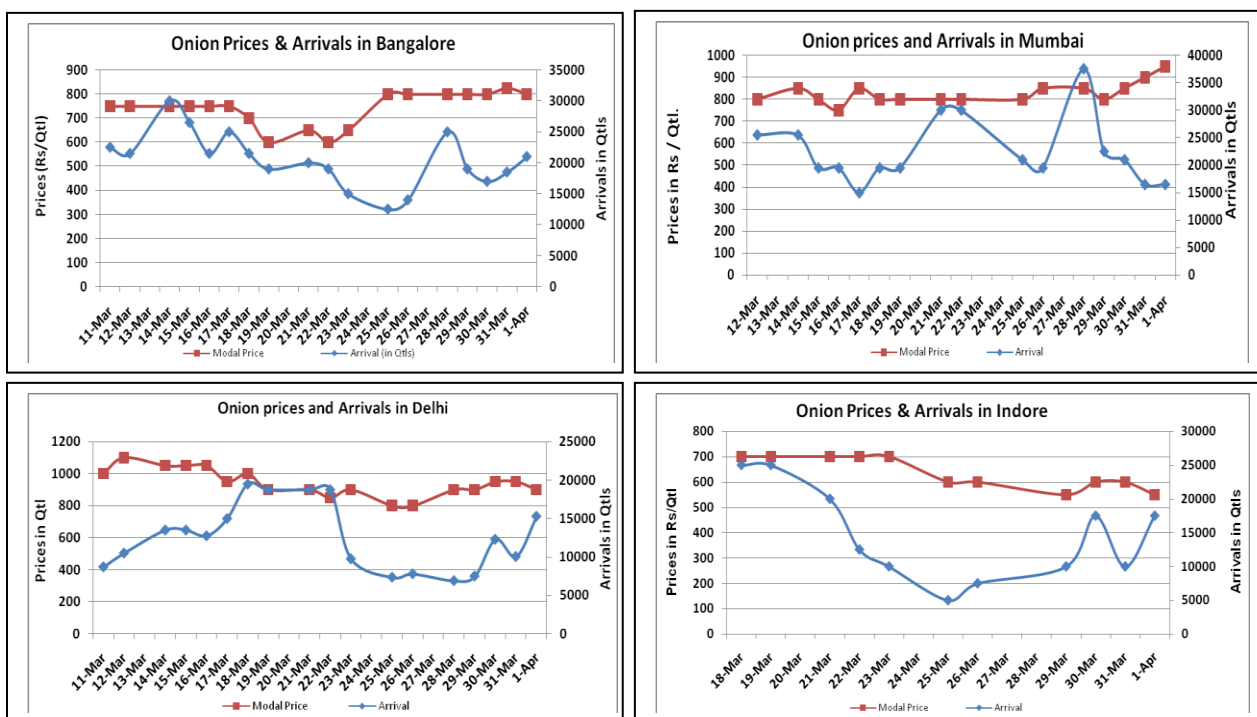


Onion Fundamentals:

- Mixed sentiment witnessed in Onion major domestic market on Friday.
- In Delhi, current week modal prices are trading near Rs 900/ quintal compared to Rs 1320/ quintal in corresponding year of 2015 during same period.
- In Madhya Pradesh Rabi onion acreage is expected to be higher by 53.03% against last year acreage of 91387 hectares. This year Rabi acreage estimate is approximately 139849.53 hectares.
- In Lasalgaon, mandi is expected to open on 3rd of April amid festival holidays and March closing. So supply of onion may be disrupted for next few days and its impact would be seen on onion prices.
- In M.P, average Rabi onion yield is calculated to be 23.91 ton/Ha which is 16.1% higher compared to corresponding year of 2014-15. However, last year average yield estimated to be 20.60 ton/Ha.

Onion wholesale Prices & Arrivals in Producing & Consumption Centers



(Source: AGRIWATCH)

Note: The above graph is made on data collected by Agriwatch through private sources because Agmarknet data are not consistent and lots of gaps in reporting.

Onion Prices & Arrivals in Major Mandis as on 01.April.2016

Mandis	Lasalgaon	Pimpalgaon	Niphad	Pune	Indore	Delhi	Bangalore
Price (Rs/Qtl)	Closed	Closed	Closed	700-950	500-900	600-1200	500-1100
Arrivals (Qtl)	Closed	Closed	Closed	10500	17500	15300	21000

Onion Prices & Arrivals in Major Mandis as on 31.Mar.2016

Mandis	Lasalgaon	Pimpalgaon	Niphad	Pune	Indore	Delhi	Bangalore
Price (Rs/Qtl)	Closed	Closed	Closed	700-950	300-900	700-1200	550-1100
Arrivals (Qtl)	Closed	Closed	Closed	10500	10000	10050	18500

(Source: AGRIWATCH)

Wholesale and Retail Prices in Major Markets:

Wholesale Prices											Retail Prices
Prices in Rs/Quintal	01.April.2016#			31.Mar.2016#			Agmarknet 31.Mar.2016*			Consumer Affairs 01 April.	Consumer Affairs 01 April.
Market	Min. Price	Max. Price	Modal Price	Min. Price	Max. Price	Modal Price	Min. Price	Max. Price	Modal Price	Modal Price	Modal Price
Delhi	600	1200	900	700	1200	950	563	1200	973	950	2400
Lasalgaon	Closed	Closed	Closed	Closed	Closed	Closed	-	-	-	-	-
Pimpalgaon	Closed	Closed	Closed	Closed	Closed	Closed	-	-	-	-	-
Pune	700	950	825	700	950	825	500	950	800	-	-
Mumbai	800	1100	950	700	1100	900	950	1100	1000	1025	2000
Indore	500	900	550	300	900	600	100	875	500	900	1100
Bangalore	500	1100	800	550	1100	825	700	1100	900	-	-
Ahmednagar	300	900	600	300	900	600	-	-	-	-	-
Solapur	200	800	500	200	800	500	100	1000	500	-	-

(Source: #Agriwatch,*Agmarknet)

Onion Arrivals in Major Markets:

Arrivals in Qtls	Ahmedabad	Pune	Mumbai	Delhi	Indore	Bangalore	Ahmednagar	Solapur
1 st Apr*	NR	10500	16500	15300	17500	21000	7000	17000
31 st Mar*	Closed	10500	16500	10050	10000	18500	7000	18000
31 st Mar#	-	15270	8500	10384	6625	19000	-	9500

(Source: *Agriwatch, # Agmarknet)

Disclaimer

The information contained in this document has been compiled by Agriwatch from sources believed to be reliable, such as NHB, Agmarknet, etc. and directly from traders in mandis. However, users of this data are requested to use the information with due caution and crosscheck with other sources. This document is not, and should not be construed as an offer to sell or buy any commodities. This document may not be reproduced, distributed or published without the express consent of SFAC