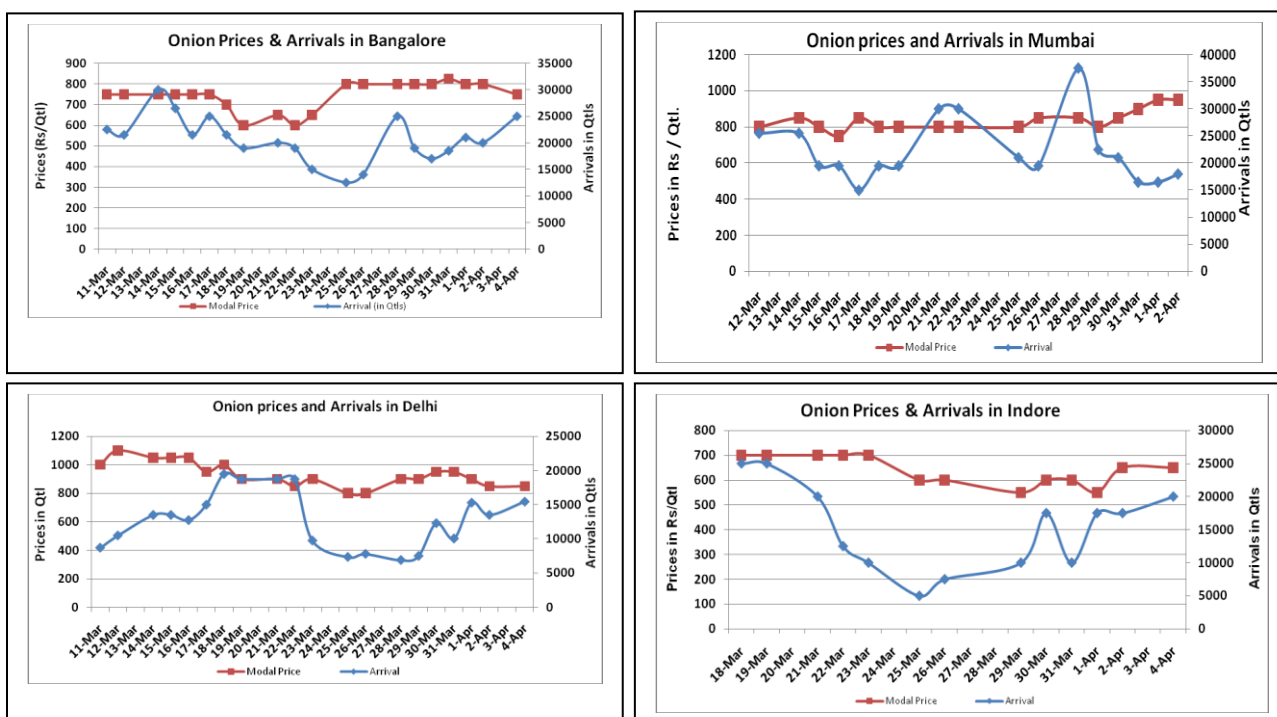


Onion Fundamentals:

- Steady to weak sentiments recorded in key Onion spot markets on Monday. Higher arrivals in Bangalore, Delhi and Indore compared to prior day pressurize the prices. Mumbai market closed yesterday due to strike.
- In Delhi, current week modal prices are trading near Rs 900/ quintal compared to Rs 1320/ quintal in corresponding year of 2015 during same period.
- In Madhya Pradesh Rabi onion acreage is expected to be higher by 53.03% against last year acreage of 91387 hectares. This year Rabi acreage estimate is approximately 139849.53 hectares.
- In Lasalgaon, mandi is expected to open on 3rd of April amid festival holidays and March closing. So supply of onion may be disrupted for next few days and its impact would be seen on onion prices.
- In M.P, average Rabi onion yield is calculated to be 23.91 ton/Ha which is 16.1% higher compared to corresponding year of 2014-15. However, last year average yield estimated to be 20.60 ton/Ha.

Onion wholesale Prices & Arrivals in Producing & Consumption Centers



(Source: AGRIWATCH)

Note: The above graph is made on data collected by Agriwatch through private sources because Agmarknet data are not consistent and lots of gaps in reporting.

Onion Prices & Arrivals in Major Mandis as on 04.April.2016

Mandis	Lasalgaon	Pimpalgaon	Niphad	Pune	Indore	Delhi	Bangalore
Price (Rs/Qtl)	Closed	Closed	Closed	Closed	500-900	600-1100	500-1000
Arrivals (Qtl)	Closed	Closed	Closed	Closed	20000	15450	25000

Onion Prices & Arrivals in Major Mandis as on 02.April.2016

Mandis	Lasalgaon	Pimpalgaon	Niphad	Pune	Indore	Delhi	Bangalore
Price (Rs/Qtl)	Closed	Closed	Closed	700-950	500-900	600-1200	500-1100
Arrivals (Qtl)	Closed	Closed	Closed	10500	17500	15300	21000

(Source: AGRIWATCH)

Wholesale and Retail Prices in Major Markets:

Wholesale Prices											Retail Prices
Prices in Rs/Quintal	04.April.2016#			02.April.2016#			Agmarknet 02.April.2016*			Consumer Affairs 04 April.	Consumer Affairs 04 April.
Market	Min. Price	Max. Price	Modal Price	Min. Price	Max. Price	Modal Price	Min. Price	Max. Price	Modal Price	Modal Price	Modal Price
Delhi	600	1100	850	600	1200	900	700	1250	948	900	2400
Lasalgaon	Closed	Closed	Closed	Closed	Closed	Closed	-	-	-	-	-
Pimpalgaon	Closed	Closed	Closed	Closed	Closed	Closed	-	-	-	-	-
Pune	Closed	Closed	Closed	700	950	825	-	-	-	-	-
Mumbai	Closed	Closed	Closed	800	1100	950	800	1000	900	900	1900
Indore	500	900	650	500	900	550	-	-	-	900	1100
Bangalore	500	1000	750	500	1100	800	600	1000	800	-	-
Ahmednagar	400	950	675	300	900	600	-	-	-	-	-
Solapur	200	900	550	200	800	500	100	1200	550	-	-

(Source: #Agriwatch, *Agmarknet)

Onion Arrivals in Major Markets:

Arrivals in Qtls	Ahmedabad	Pune	Mumbai	Delhi	Indore	Bangalore	Ahmednagar	Solapur
04 th Apr*	12168	Closed	Closed	15450	20000	25000	15000	20000
02 nd Mar*	NR	10500	16500	15300	17500	21000	7000	17000
02 nd Mar#	8043	-	8900	15545	-	24690	-	10840

(Source: *Agriwatch, # Agmarknet)

Disclaimer

The information contained in this document has been compiled by Agriwatch from sources believed to be reliable, such as NHB, Agmarknet, etc. and directly from traders in mandis. However, users of this data are requested to use the information with due caution and crosscheck with other sources. This document is not, and should not be construed as an offer to sell or buy any commodities. This document may not be reproduced, distributed or published without the express consent of SFAC