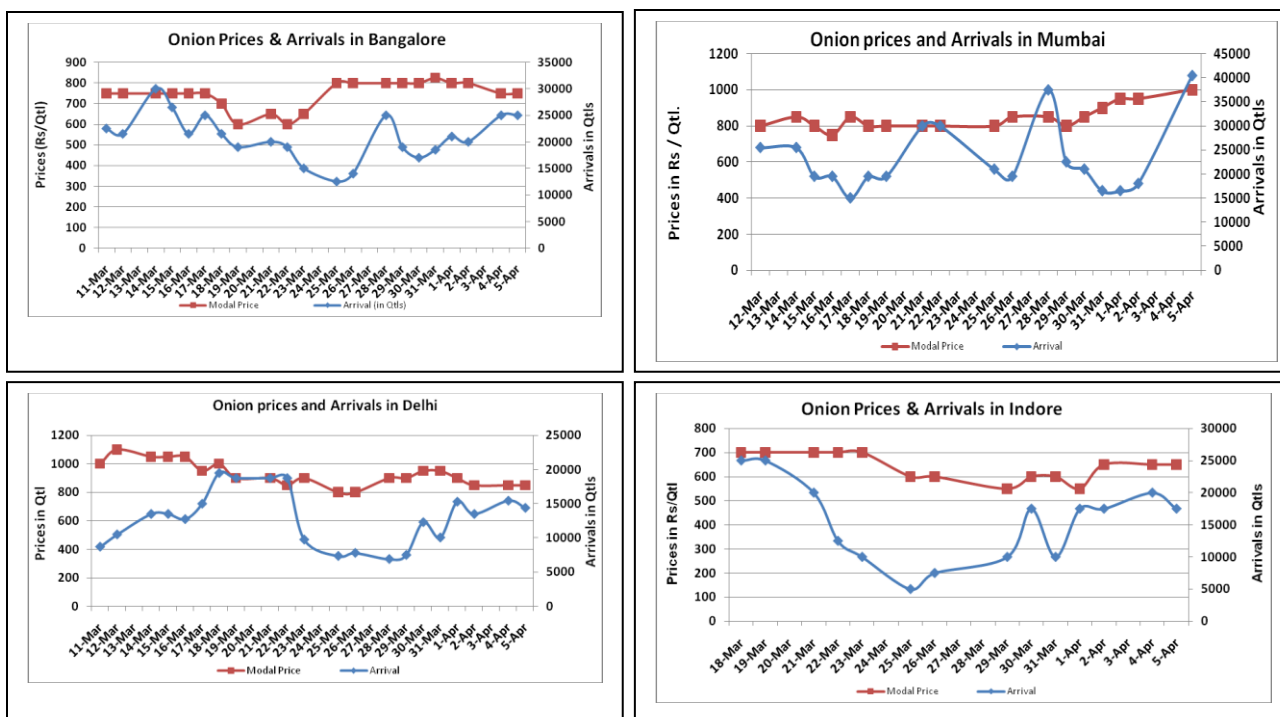


Onion Fundamentals:

- Steady sentiments recorded in key Onion spot markets on Tuesday. Only, Mumbai center reported higher arrivals on Tuesday as market was closed on Monday due to strike.
- In Delhi, current week modal prices are trading near Rs 900/ quintal compared to Rs 1320/ quintal in corresponding year of 2015 during same period.
- In Madhya Pradesh Rabi onion acreage is expected to be higher by 53.03% against last year acreage of 91387 hectares. This year Rabi acreage estimate is approximately 139849.53 hectares.
- In Lasalgaon, mandi is expected to open on 3rd of April amid festival holidays and March closing. So supply of onion may be disrupted for next few days and its impact would be seen on onion prices.
- In M.P, average Rabi onion yield is calculated to be 23.91 ton/Ha which is 16.1% higher compared to corresponding year of 2014-15. However, last year average yield estimated to be 20.60 ton/Ha.

Onion wholesale Prices & Arrivals in Producing & Consumption Centers



(Source: AGRIWATCH)

Note: The above graph is made on data collected by Agriwatch through private sources because Agmarknet data are not consistent and lots of gaps in reporting.

Onion Prices & Arrivals in Major Mandis as on 05.April.2016

Mandis	Lasalgaon	Pimpalgaon	Niphad	Pune	Indore	Delhi	Bangalore
Price (Rs/Qtl)	700-900	700-925	Closed	700-900	500-800	600-1100	500-1000
Arrivals (Qtl)	8000	8500	Closed	22500	17500	14400	25000

Onion Prices & Arrivals in Major Mandis as on 04.April.2016

Mandis	Lasalgaon	Pimpalgaon	Niphad	Pune	Indore	Delhi	Bangalore
Price (Rs/Qtl)	Closed	Closed	Closed	Closed	500-900	600-1100	500-1000
Arrivals (Qtl)	Closed	Closed	Closed	Closed	20000	15450	25000

(Source: AGRIWATCH)

Wholesale and Retail Prices in Major Markets:

Wholesale Prices											Retail Prices
Prices in Rs/Quintal	05.April.2016#			04.April.2016#			Agmarknet 04.April.2016*			Consumer Affairs 05 April.	Consumer Affairs 05 April.
Market	Min. Price	Max. Price	Modal Price	Min. Price	Max. Price	Modal Price	Min. Price	Max. Price	Modal Price	Modal Price	Modal Price
Delhi	600	1100	850	600	1100	850	-	-	-	875	2400
Lasalgaon	700	900	800	Closed	Closed	Closed	-	-	-	-	-
Pimpalgaon	700	925	813	Closed	Closed	Closed	-	-	-	-	-
Pune	700	900	800	Closed	Closed	Closed	400	900	750	-	-
Mumbai	900	1100	1000	Closed	Closed	Closed	-	-	-	NR	1900
Indore	500	800	650	500	900	650	100	875	500	1100	1300
Bangalore	500	1000	750	500	1000	750	600	1000	800	-	-
Ahmednagar	400	950	675	400	950	675	-	-	-	-	-
Solapur	200	800	500	200	900	550	100	1025	500	-	-

(Source: #Agriwatch,*Agmarknet)

Onion Arrivals in Major Markets:

Arrivals in Qtls	Ahmedabad	Pune	Mumbai	Delhi	Indore	Bangalore	Ahmednagar	Solapur
05 th Apr*	8538	22500	40500	14400	17500	25000	15000	15000
04 th Mar*	12168	Closed	Closed	15450	20000	25000	15000	20000
04 th Mar#	NR	1460	-	-	12525	29260	-	17600

(Source: *Agriwatch, # Agmarknet)

Disclaimer

The information contained in this document has been compiled by Agriwatch from sources believed to be reliable, such as NHB, Agmarknet, etc. and directly from traders in mandis. However, users of this data are requested to use the information with due caution and crosscheck with other sources. This document is not, and should not be construed as an offer to sell or buy any commodities. This document may not be reproduced, distributed or published without the express consent of SFAC