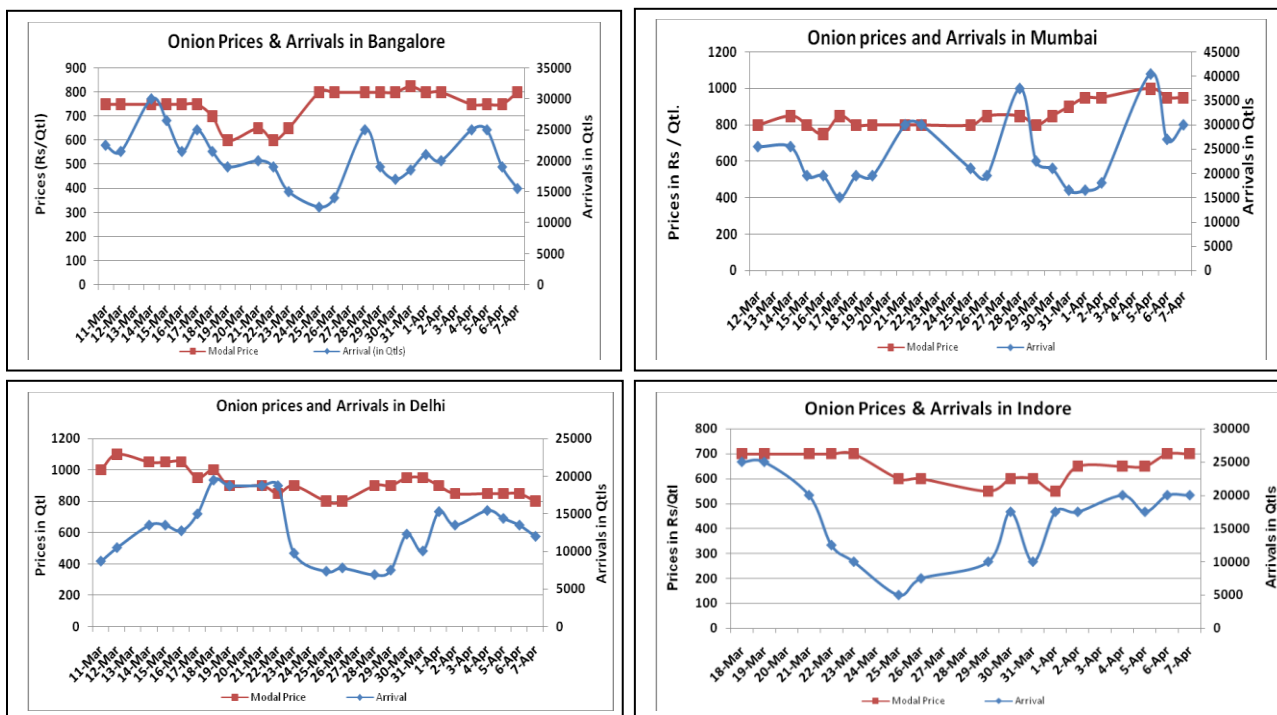


Onion Fundamentals:

- Continue mixed sentiments recorded in key spot markets on Thursday. Prices in Mumbai market declined and surged in Indore market. Steady sentiments witnessed in Bangalore and Delhi market.
- Meanwhile, Arrivals declined in most of the markets compared to prior day as reported.
- In Maharashtra, Rabi acreage is higher and expected to be 1.90 lakh hectares compared to corresponding year of 2014, 1.85 lakh hectares.
- In Delhi, current week modal prices are trading near Rs 900/ quintal compared to Rs 1320/ quintal in corresponding year of 2015 during same period.
- In Madhya Pradesh Rabi onion acreage is expected to be higher by 53.03% against last year acreage of 91387 hectares. This year Rabi acreage estimate is approximately 139849.53 hectares.
- In M.P, average Rabi onion yield is calculated to be 23.91 ton/Ha which is 16.1% higher compared to corresponding year of 2014-15. However, last year average yield estimated to be 20.60 ton/Ha.

Onion wholesale Prices & Arrivals in Producing & Consumption Centers



(Source: AGRIWATCH)

Note: The above graph is made on data collected by Agriwatch through private sources because Agmarknet data are not consistent and lots of gaps in reporting.

Onion Prices & Arrivals in Major Mandis as on 07.April.2016

Mandis	Lasalgaon	Pimpalgaon	Niphad	Pune	Indore	Delhi	Bangalore
Price (Rs/Qtl)	600-800	Closed	Closed	700-900	500-900	600-1000	500-1100
Arrivals (Qtl)	9000	Closed	Closed	21000	20000	12000	15500

Onion Prices & Arrivals in Major Mandis as on 06.April.2016

Mandis	Lasalgaon	Pimpalgaon	Niphad	Pune	Indore	Delhi	Bangalore
Price (Rs/Qtl)	600-800	800-900	300-830	700-900	500-900	600-1100	500-1000
Arrivals (Qtl)	9000	5000	10000	22500	20000	13500	19000

(Source: AGRIWATCH)

Wholesale and Retail Prices in Major Markets:

Wholesale Prices											Retail Prices
Prices in Rs/Quintal	07.April.2016#			06.April.2016#			Agmarknet 06.April.2016*			Consumer Affairs 07 April.	Consumer Affairs 07 April.
Market	Min. Price	Max. Price	Modal Price	Min. Price	Max. Price	Modal Price	Min. Price	Max. Price	Modal Price	Modal Price	Modal Price
Delhi	600	1000	800	600	1100	850	450	1175	858	875	2400
Lasalgaon	600	800	700	600	800	700	-	-	-	-	-
Pimpalgaon	Closed	Closed	Closed	800	900	850	-	-	-	-	-
Pune	700	900	800	700	900	800	400	800	700	-	-
Mumbai	900	1000	950	800	1100	950	800	1000	900	900	1900
Indore	500	900	700	500	900	700	100	750	500	1100	1300
Bangalore	500	1100	800	500	1000	750	600	1000	800	-	-
Ahmednagar	700	900	800	400	950	675	-	-	-	-	-
Solapur	200	800	500	200	800	500	100	1000	500	-	-

(Source: #Agriwatch,*Agmarknet)

Onion Arrivals in Major Markets:

Arrivals in Qtls	Ahmedabad	Pune	Mumbai	Delhi	Indore	Bangalore	Ahmednagar	Solapur
07 th Apr*	5509	21000	30000	12000	20000	15500	20000	15000
06 th Mar*	6692	22500	27000	13500	20000	19000	15000	15000
06 th Mar#	6692	22870	14000	10919	12850	16770	-	20790

(Source: *Agriwatch, # Agmarknet)

Disclaimer

The information contained in this document has been compiled by Agriwatch from sources believed to be reliable, such as NHB, Agmarknet, etc. and directly from traders in mandis. However, users of this data are requested to use the information with due caution and crosscheck with other sources. This document is not, and should not be construed as an offer to sell or buy any commodities. This document may not be reproduced, distributed or published without the express consent of SFAC