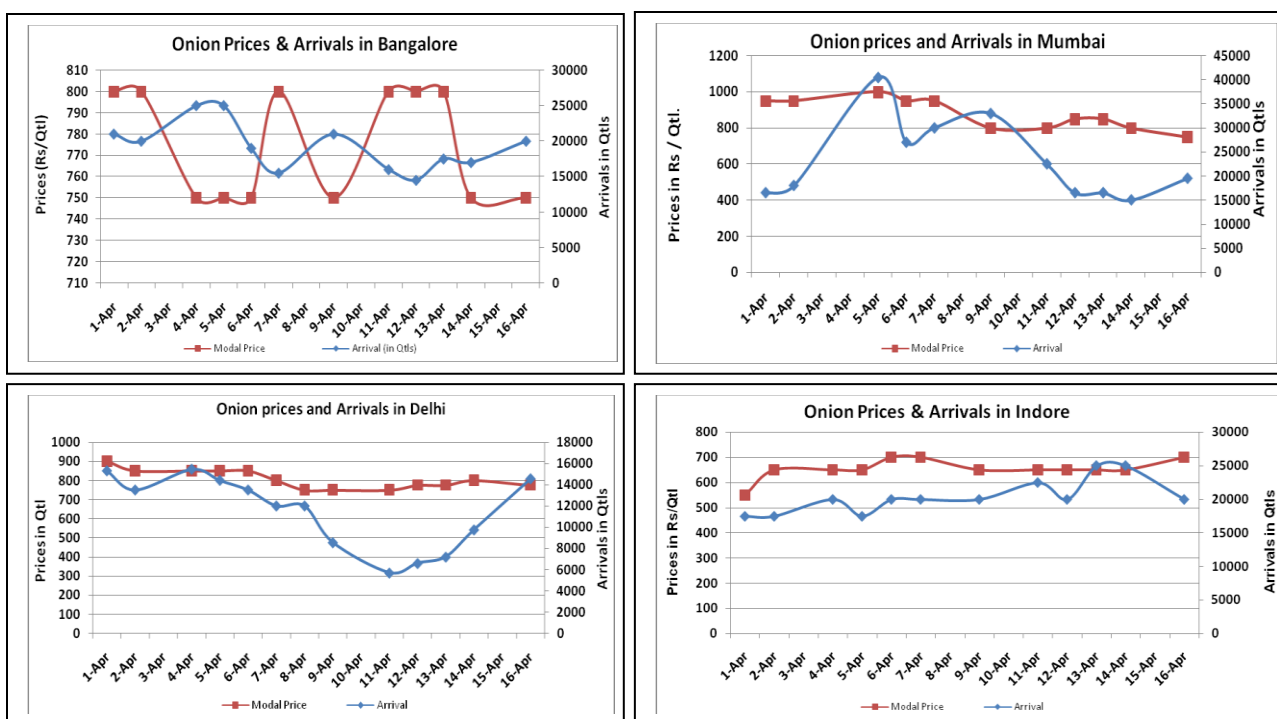


Onion Fundamentals:

- By and large increasing onion supply reported in spot market on Saturday. Onion prices slightly reported down in Delhi and Mumbai market.
- In Delhi, modal prices are trading in the range of Rs 775/ quintal compared to Rs 1450/ quintal in corresponding year of 2015.
- In Maharashtra, Rabi acreage is higher and expected to be 1.90 lakh hectares compared to corresponding year of 2014, 1.85 lakh hectares.
- In Madhya Pradesh Rabi onion acreage is expected to be higher by 53.03% against last year acreage of 91387 hectares. This year Rabi acreage estimate is approximately 139849.53 hectares.
- In Bangalore, onion is arriving in market from Maharashtra and local region. Prices are trading in the range of Rs 500-Rs 1000/ quintal.

Onion wholesale Prices & Arrivals in Producing & Consumption Centers



(Source: AGRIWATCH)

Note: The above graph is made on data collected by Agriwatch through private sources because Agmarknet data are not consistent and lots of gaps in reporting.

Onion Prices & Arrivals in Major Mandis as on 16.April.2016

Mandis	Lasalgaon	Pimpalgaon	Niphad	Pune	Indore	Delhi	Bangalore
Price (Rs/Qtl)	Closed	Closed	300-850	Closed	600-800	500-1050	500-1000
Arrivals (Qtl)	Closed	Closed	3000	Closed	20000	14550	20000

Onion Prices & Arrivals in Major Mandis as on 14.April.2016

Mandis	Lasalgaon	Pimpalgaon	Niphad	Pune	Indore	Delhi	Bangalore
Price (Rs/Qtl)	Closed	Closed	Closed	600-850	500-800	500-1100	500-1000
Arrivals (Qtl)	Closed	Closed	Closed	12000	25000	9750	17000

(Source: AGRIWATCH)

Wholesale and Retail Prices in Major Markets:

Wholesale Prices											Retail Prices
Prices in Rs/Quintal	16.April.2016#			14.April.2016#			Agmarknet 14.April.2016*			Consumer Affairs 14 April.	Consumer Affairs 14 April.
Market	Min. Price	Max. Price	Modal Price	Min. Price	Max. Price	Modal Price	Min. Price	Max. Price	Modal Price	Modal Price	Modal Price
Delhi	500	1050	775	500	1100	800	-	-	-	800	2300
Lasalgaon	Closed	Closed	Closed	Closed	Closed	Closed	-	-	-	-	-
Pimpalgaon	Closed	Closed	Closed	Closed	Closed	Closed	-	-	-	-	-
Pune	Closed	Closed	Closed	600	850	725	-	-	-	-	-
Mumbai	600	900	750	700	900	800	-	-	-	950	2000
Indore	600	800	700	500	800	650	-	-	-	1100	1300
Bangalore	500	1000	750	500	1000	750	-	-	-	NR	NR
Ahmednagar	200	850	525	200	800	500	-	-	-	-	-
Solapur	200	900	550	Closed	Closed	Closed	-	-	-	-	-

(Source: #Agriwatch, *Agmarknet)

Onion Arrivals in Major Markets:

Arrivals in Qtls	Ahmedabad	Pune	Mumbai	Delhi	Indore	Bangalore	Ahmednagar	Solapur
16 th Apr*	NR	Closed	19500	14550	20000	20000	15000	12800
14 th Apr*	Closed	12000	15000	9750	25000	17000	25000	Closed
14 th Apr#	4697	-	-	-	-	-	-	-

(Source: *Agriwatch, # Agmarknet)

Disclaimer

The information contained in this document has been compiled by Agriwatch from sources believed to be reliable, such as NHB, Agmarknet, etc. and directly from traders in mandis. However, users of this data are requested to use the information with due caution and crosscheck with other sources. This document is not, and should not be construed as an offer to sell or buy any commodities. This document may not be reproduced, distributed or published without the express consent of SFAC