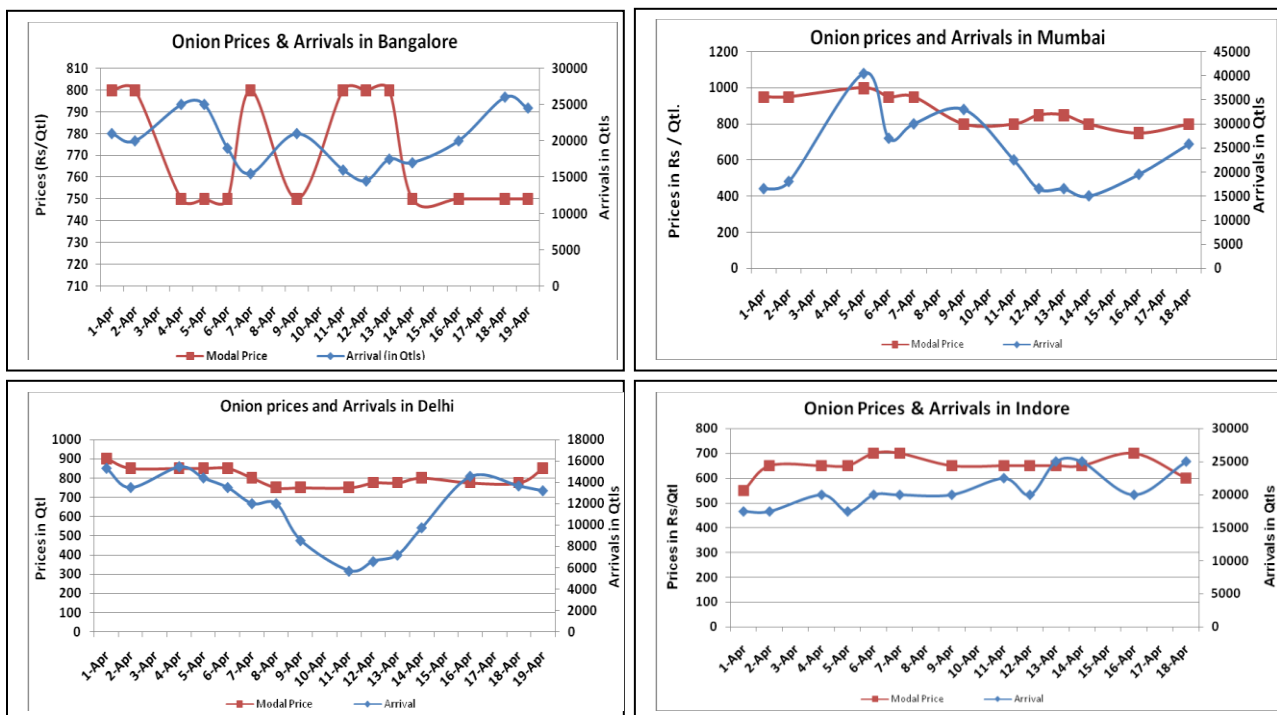


### Onion Fundamentals:

- Steady sentiment witnessed in Onion major Delhi and Bangalore spot market on Tuesday. Mumbai and Indore market reported closed due to Mahavir jayanti yesterday.
- Continuous Onion supply in Bangalore spot market capped on prices.
- In Delhi, modal prices are trading in the range of Rs 771/ quintal compared to Rs 1450/ quintal in corresponding year of 2015.
- In Maharashtra, Rabi acreage is higher and expected to be 1.90 lakh hectares compared to corresponding year of 2014, 1.85 lakh hectares.
- In Madhya Pradesh Rabi onion acreage is expected to be higher by 53.03% against last year acreage of 91387 hectares. This year Rabi acreage estimate is approximately 139849.53 hectares.
- In Bangalore, onion is arriving in market from Maharashtra and local region. Prices are trading in the range of Rs 500-Rs 1000/ quintal.

### Onion wholesale Prices & Arrivals in Producing & Consumption Centers



(Source: AGRIWATCH)

Note: The above graph is made on data collected by Agriwatch through private sources because Agmarknet data are not consistent and lots of gaps in reporting.

### Onion Prices & Arrivals in Major Mandis as on 19.April.2016

Mandis	Lasalgaon	Pimpalgaon	Niphad	Pune	Indore	Delhi	Bangalore
Price (Rs/Qtl)	600-900	Closed	Closed	600-800	Closed	600-1100	500-1000
Arrivals (Qtl)	8000	Closed	Closed	12600	Closed	13200	24500

### Onion Prices & Arrivals in Major Mandis as on 18.April.2016

Mandis	Lasalgaon	Pimpalgaon	Niphad	Pune	Indore	Delhi	Bangalore
Price (Rs/Qtl)	500-850	750-950	300-810	500-850	300-900	500-1050	500-1000
Arrivals (Qtl)	12000	12000	3800	13500	25000	13650	26000

(Source: AGRIWATCH)

## Wholesale and Retail Prices in Major Markets:

Wholesale Prices											Retail Prices
Prices in Rs/Quintal	19.April.2016#			18.April.2016#			Agmarknet 18.April.2016*			Consumer Affairs 19 April.	Consumer Affairs 19 April.
Market	Min. Price	Max. Price	Modal Price	Min. Price	Max. Price	Modal Price	Min. Price	Max. Price	Modal Price	Modal Price	Modal Price
Delhi	600	1100	850	500	1050	775	375	1100	804	800	2300
Lasalgaon	600	900	750	500	850	675	400	876	760	-	-
Pimpalgaon	Closed	Closed	Closed	750	950	850	NR	NR	NR	-	-
Pune	600	800	700	500	850	675	NR	NR	NR	-	-
Mumbai	Closed	Closed	Closed	700	900	800	650	1050	800	NR	1600
Indore	Closed	Closed	Closed	300	900	600	100	750	500	1100	1300
Bangalore	500	1000	750	500	1000	750	600	900	750	-	-
Ahmednagar	200	800	525	200	800	525	100	900	450	-	-
Solapur	200	800	500	200	800	500	100	900	450	-	-

(Source: #Agriwatch,\*Agmarknet)

## Onion Arrivals in Major Markets:

Arrivals in Qtls	Ahmedabad	Pune	Mumbai	Delhi	Indore	Bangalore	Ahmednagar	Solapur
19 <sup>th</sup> Apr*	4891	12600	Closed	13200	Closed	24500	20000	14000
18 <sup>th</sup> Apr*	5203	13500	25800	13650	25000	26000	20000	15000
18 <sup>th</sup> Apr#	NR	NR	14150	1739	15765	26090	19730	14380

(Source: \*Agriwatch, # Agmarknet)

## Disclaimer

The information contained in this document has been compiled by Agriwatch from sources believed to be reliable, such as NHB, Agmarknet, etc. and directly from traders in mandis. However, users of this data are requested to use the information with due caution and crosscheck with other sources. This document is not, and should not be construed as an offer to sell or buy any commodities. This document may not be reproduced, distributed or published without the express consent of SFAC