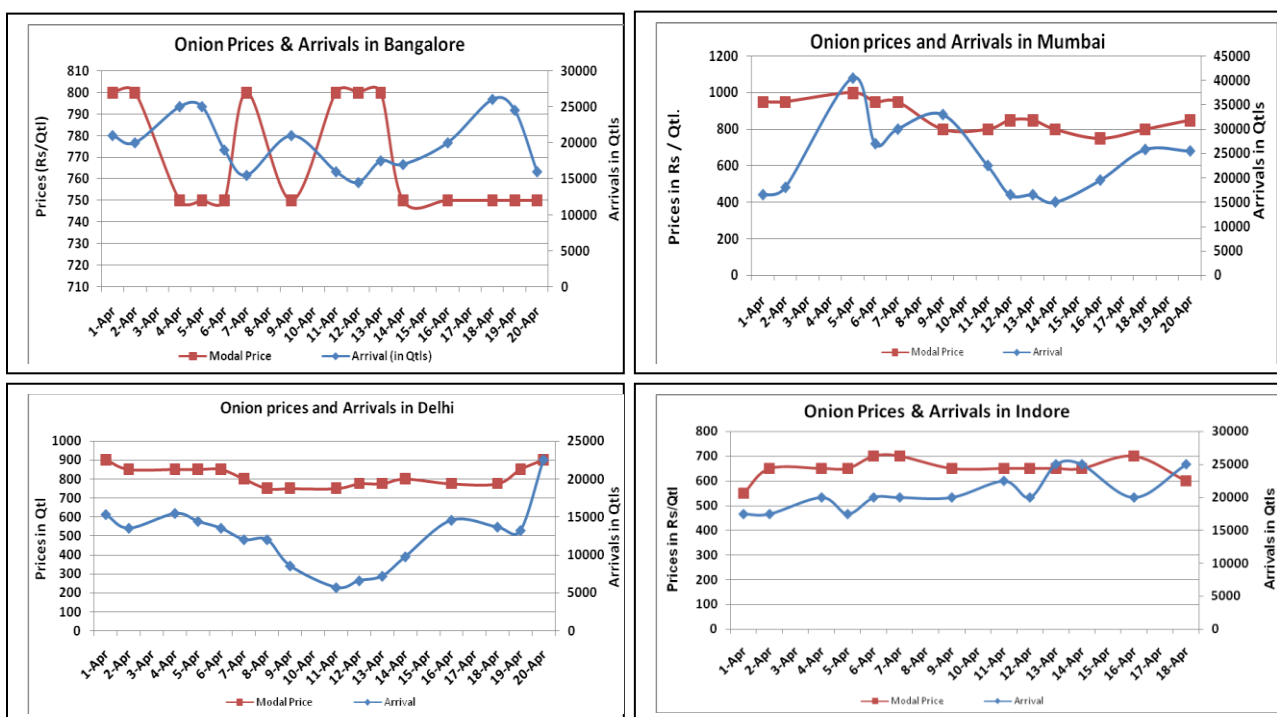


### Onion Fundamentals:

- Steady to firm sentiment witnessed in Onion major spot market on Wednesday.
- By and large Onion supply reported down in the spot market.
- In Madhya Pradesh Rabi onion acreage is expected to be higher by 53.03% against last year acreage of 91387 hectares. This year Rabi acreage estimate is approximately 139849.53 hectares.
- In Delhi, modal prices are trading in the range of Rs 771/ quintal compared to Rs 1450/ quintal in corresponding year of 2015.
- In Maharashtra, Rabi acreage is higher and expected to be 1.90 lakh hectares compared to corresponding year of 2014, 1.85 lakh hectares.
- In Bangalore, onion is arriving in market from Maharashtra and local region. Prices are trading in the range of Rs 500-Rs 1000/ quintal.

### Onion wholesale Prices & Arrivals in Producing & Consumption Centers



(Source: AGRIWATCH)

Note: The above graph is made on data collected by Agriwatch through private sources because Agmarknet data are not consistent and lots of gaps in reporting.

### Onion Prices & Arrivals in Major Mandis as on 20.April.2016

Mandis	Lasalgaon	Pimpalgaon	Niphad	Pune	Indore	Delhi	Bangalore
Price (Rs/Qtl)	400-900	600-1000	250-780	600-800	-	400-1100	500-1000
Arrivals (Qtl)	7000	14000	4000	12000	-	22500	16000

### Onion Prices & Arrivals in Major Mandis as on 19.April.2016

Mandis	Lasalgaon	Pimpalgaon	Niphad	Pune	Indore	Delhi	Bangalore
Price (Rs/Qtl)	600-900	Closed	Closed	600-800	Closed	600-1100	500-1000
Arrivals (Qtl)	8000	Closed	Closed	12600	Closed	13200	24500

(Source: AGRIWATCH)

## Wholesale and Retail Prices in Major Markets:

Wholesale Prices											Retail Prices
Prices in Rs/Quintal	20.April.2016#			19.April.2016#			Agmarknet 19.April.2016*			Consumer Affairs 20 April.	Consumer Affairs 20 April.
Market	Min. Price	Max. Price	Modal Price	Min. Price	Max. Price	Modal Price	Min. Price	Max. Price	Modal Price	Modal Price	Modal Price
Delhi	400	1100	900	600	1100	850	375	1063	783	800	2300
Lasalgaon	400	900	800	600	900	750	-	-	-	-	-
Pimpalgaon	600	1000	800	Closed	Closed	Closed	-	-	-	-	-
Pune	600	800	700	600	800	700	-	-	-	-	-
Mumbai	700	1000	850	Closed	Closed	Closed	-	-	-	850	1700
Indore	-	-	-	Closed	Closed	Closed	-	-	-	1100	1300
Bangalore	500	1000	750	500	1000	750	-	-	-	-	-
Ahmednagar	200	800	525	200	800	525	-	-	-	-	-
Solapur	200	800	600	200	800	500	100	980	450	-	-

(Source: #Agriwatch, \*Agmarknet)

## Onion Arrivals in Major Markets:

Arrivals in Qtls	Ahmedabad	Pune	Mumbai	Delhi	Indore	Bangalore	Ahmednagar	Solapur
20 <sup>th</sup> Apr*	Closed	12000	25500	22500	-	16000	20000	15000
19 <sup>th</sup> Apr*	4891	12600	Closed	13200	Closed	24500	20000	14000
19 <sup>th</sup> Apr#	NR	NR	NR	1578	NR	NR	NR	10810

(Source: \*Agriwatch, # Agmarknet)

### Disclaimer

The information contained in this document has been compiled by Agriwatch from sources believed to be reliable, such as NHB, Agmarknet, etc. and directly from traders in mandis. However, users of this data are requested to use the information with due caution and crosscheck with other sources. This document is not, and should not be construed as an offer to sell or buy any commodities. This document may not be reproduced, distributed or published without the express consent of SFAC