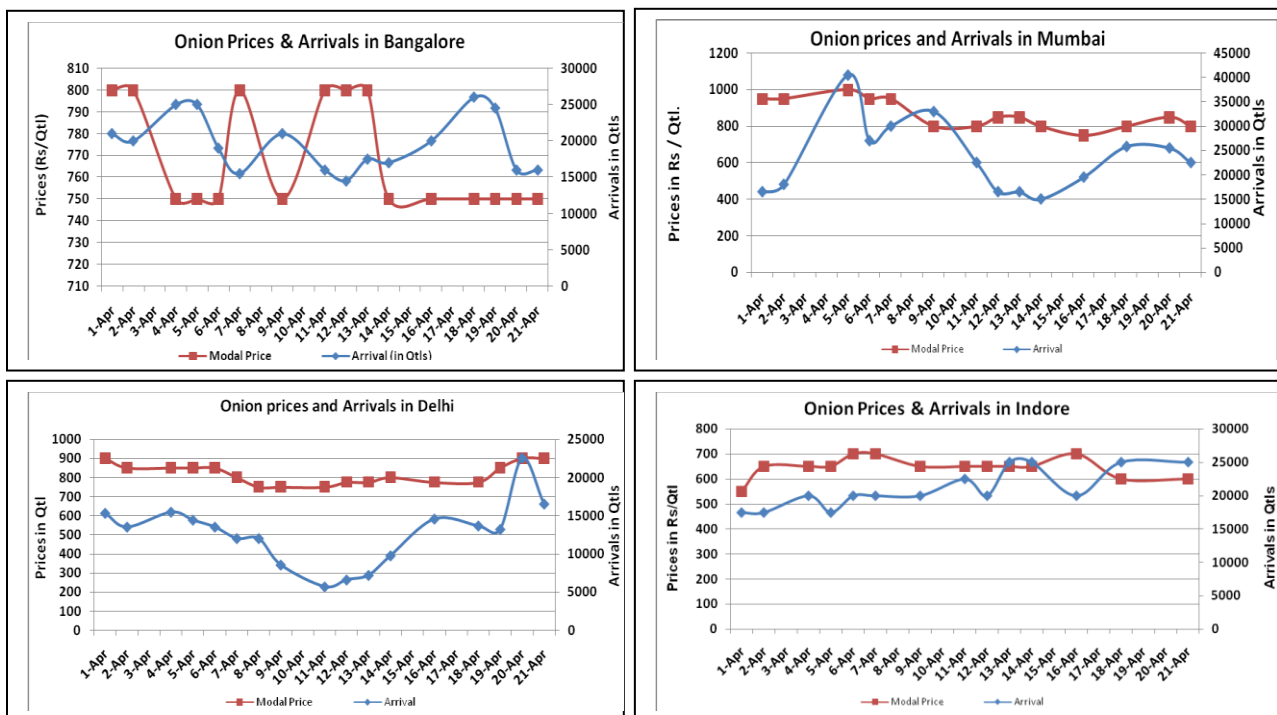


Onion Fundamentals:

- Steady to weak sentiment witnessed in Onion major spot market on Thursday.
- By and large Onion supply reported down in the spot market.
- In Madhya Pradesh Rabi onion acreage is expected to be higher by 53.03% against last year acreage of 91387 hectares. This year Rabi acreage estimate is approximately 139849.53 hectares.
- Acreage is increased due to higher onion prices last year, good weather condition and re-sowing of onion after soybean crop was damaged.
- Average Rabi onion yield in 2015-16 is estimated to be 23.91 ton/Ha against last year's average of 20.6 ton/Ha. Yield is expected higher due to favorable weather conditions, availability of water and lower pest attack as compared to previous year.
- In Bangalore, onion is arriving in market from Maharashtra and local region. Prices are trading in the range of Rs 500-Rs 1000/ quintal.

Onion wholesale Prices & Arrivals in Producing & Consumption Centers



(Source: AGRIWATCH)

Note: The above graph is made on data collected by Agriwatch through private sources because Agmarknet data are not consistent and lots of gaps in reporting.

Onion Prices & Arrivals in Major Mandis as on 21.April.2016

| Mandis | Lasalgaon | Pimpalgaon | Niphad | Pune | Indore | Delhi | Bangalore |
|----------------|-----------|------------|---------|---------|---------|----------|-----------|
| Price (Rs/Qtl) | 400-850 | 700-950 | 400-760 | 500-800 | 300-900 | 500-1100 | 500-1000 |
| Arrivals (Qtl) | 15000 | 12000 | 3600 | 12300 | 25000 | 16500 | 16000 |

Onion Prices & Arrivals in Major Mandis as on 20.April.2016

| Mandis | Lasalgaon | Pimpalgaon | Niphad | Pune | Indore | Delhi | Bangalore |
|----------------|-----------|------------|---------|---------|--------|----------|-----------|
| Price (Rs/Qtl) | 400-900 | 600-1000 | 250-780 | 600-800 | - | 400-1100 | 500-1000 |
| Arrivals (Qtl) | 7000 | 14000 | 4000 | 12000 | - | 22500 | 16000 |

(Source: AGRIWATCH)

Wholesale and Retail Prices in Major Markets:

| Wholesale Prices | | | | | | | | | | | Retail Prices |
|----------------------|----------------|------------|-------------|----------------|------------|-------------|--------------------------|------------|-------------|----------------------------|----------------------------|
| Prices in Rs/Quintal | 21.April.2016# | | | 20.April.2016# | | | Agmarknet 20.April.2016* | | | Consumer Affairs 21 April. | Consumer Affairs 21 April. |
| Market | Min. Price | Max. Price | Modal Price | Min. Price | Max. Price | Modal Price | Min. Price | Max. Price | Modal Price | Modal Price | Modal Price |
| Delhi | 500 | 1100 | 900 | 400 | 1100 | 900 | - | - | - | 800 | 2300 |
| Lasalgaon | 400 | 850 | 800 | 400 | 900 | 800 | 400 | 900 | 811 | - | - |
| Pimpalgaon | 700 | 950 | 750 | 600 | 1000 | 800 | - | - | - | - | - |
| Pune | 500 | 800 | 650 | 600 | 800 | 700 | - | - | - | - | - |
| Mumbai | 700 | 900 | 800 | 700 | 1000 | 850 | 600 | 100 | 750 | 850 | 1700 |
| Indore | 300 | 900 | 600 | - | - | - | 100 | 800 | 500 | 1100 | 1300 |
| Bangalore | 500 | 1000 | 750 | 500 | 1000 | 750 | - | - | - | - | - |
| Ahmednagar | 200 | 800 | 525 | 200 | 800 | 525 | - | - | - | - | - |
| Solapur | 200 | 850 | 550 | 200 | 800 | 600 | - | - | - | - | - |

(Source: #Agriwatch,*Agmarknet)

Onion Arrivals in Major Markets:

| Arrivals in Qtls | Ahmedabad | Pune | Mumbai | Delhi | Indore | Bangalore | Ahmednagar | Solapur |
|-----------------------|-----------|-------|--------|-------|--------|-----------|------------|---------|
| 21 th Apr* | 10943 | 12300 | 22500 | 16500 | 25000 | 16000 | 20000 | 14000 |
| 20 th Apr* | Closed | 12000 | 25500 | 22500 | - | 16000 | 20000 | 15000 |
| 20 th Apr# | - | - | 14100 | - | 18100 | - | - | - |

(Source: *Agriwatch, # Agmarknet)

Disclaimer

The information contained in this document has been compiled by Agriwatch from sources believed to be reliable, such as NHB, Agmarknet, etc. and directly from traders in mandis. However, users of this data are requested to use the information with due caution and crosscheck with other sources. This document is not, and should not be construed as an offer to sell or buy any commodities. This document may not be reproduced, distributed or published without the express consent of SFAC