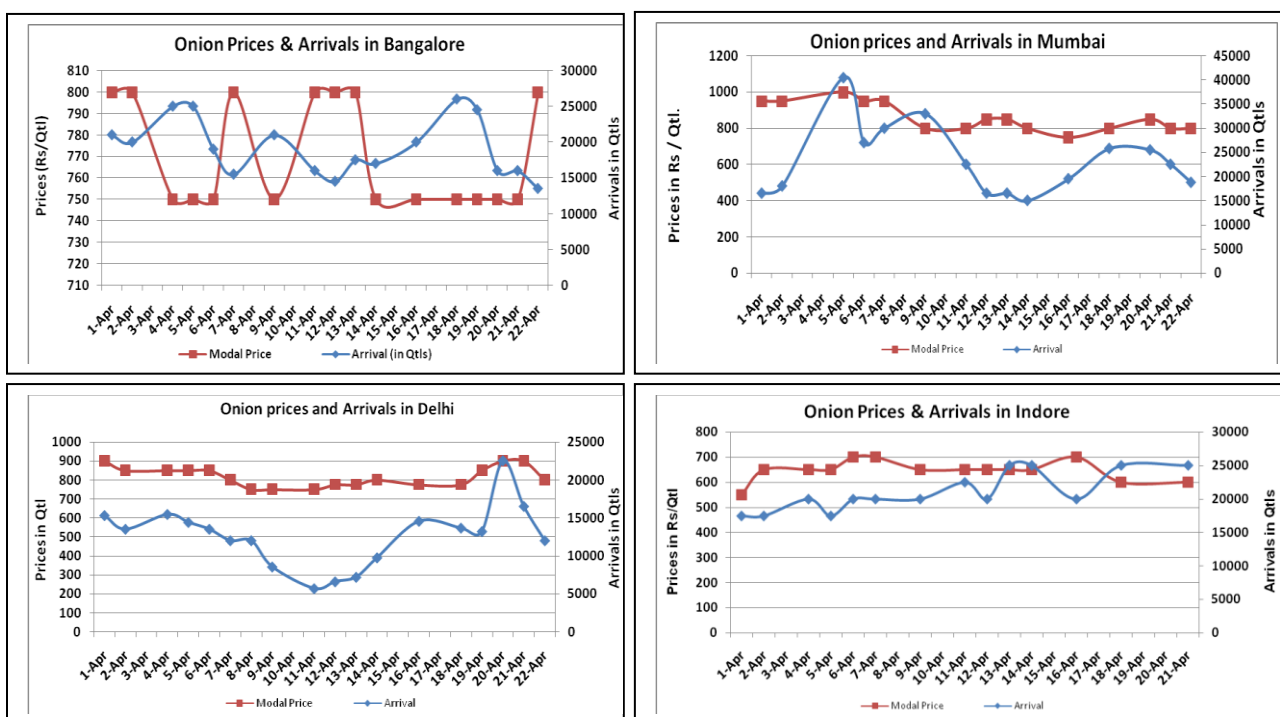


### Onion Fundamentals:

- Mixed sentiment witnessed in Onion major spot market on Friday. Indore market closed due to Hanuman Jayanti.
- By and large Onion supply reported down in the spot market.
- In Madhya Pradesh Rabi onion acreage is expected to be higher by 53.03% against last year acreage of 91387 hectares. This year Rabi acreage estimate is approximately 139849.53 hectares.
- Acreage is increased due to higher onion prices last year, good weather condition and re-sowing of onion after soybean crop was damaged.
- Average Rabi onion yield in 2015-16 is estimated to be 23.91 ton/Ha against last year's average of 20.6 ton/Ha. Yield is expected higher due to favorable weather conditions, availability of water and lower pest attack as compared to previous year.
- In Bangalore, onion is arriving in market from Maharashtra and local region. Prices are trading in the range of Rs 500-Rs 1000/ quintal.

### Onion wholesale Prices & Arrivals in Producing & Consumption Centers



(Source: AGRIWATCH)

Note: The above graph is made on data collected by Agriwatch through private sources because Agmarknet data are not consistent and lots of gaps in reporting.

### Onion Prices & Arrivals in Major Mandis as on 22.April.2016

Mandis	Lasalgaon	Pimpalgaon	Niphad	Pune	Indore	Delhi	Bangalore
Price (Rs/Qtl)	500-700	700-900	Closed	500-900	Closed	700-1100	500-1100
Arrivals (Qtl)	12000	8000	Closed	12000	Closed	12000	13500

### Onion Prices & Arrivals in Major Mandis as on 21.April.2016

Mandis	Lasalgaon	Pimpalgaon	Niphad	Pune	Indore	Delhi	Bangalore
Price (Rs/Qtl)	400-850	700-950	400-760	500-800	300-900	500-1100	500-1000
Arrivals (Qtl)	15000	12000	3600	12300	25000	16500	16000

(Source: AGRIWATCH)

### Wholesale and Retail Prices in Major Markets:

Wholesale Prices											Retail Prices
Prices in Rs/Quintal	22.April.2016#			21.April.2016#			Agmarknet 21.April.2016*			Consumer Affairs 22 April.	Consumer Affairs 22 April.
Market	Min. Price	Max. Price	Modal Price	Min. Price	Max. Price	Modal Price	Min. Price	Max. Price	Modal Price	Modal Price	Modal Price
Delhi	700	1100	800	500	1100	900	450	1100	822	825	2200
Lasalgaon	500	700	600	400	850	800	400	901	800	-	-
Pimpalgaon	700	900	800	700	950	750	400	991	621	-	-
Pune	500	900	700	500	800	650	-	-	-	-	-
Mumbai	700	900	800	700	900	800	700	1050	850	875	1700
Indore	Closed	Closed	Closed	300	900	600	100	800	500	1100	1300
Bangalore	500	1100	800	500	1000	750	600	900	750	1200	1600
Ahmednagar	200	800	550	200	800	550	-	-	-	-	-
Solapur	200	800	600	200	850	550	-	-	-	-	-

(Source: #Agriwatch,\*Agmarknet)

### Onion Arrivals in Major Markets:

Arrivals in Qtls	Ahmedabad	Pune	Mumbai	Delhi	Indore	Bangalore	Ahmednagar	Solapur
22 Apr*	4617	12000	18750	12000	Closed	13500	20000	15000
21 Apr*	10943	12300	22500	16500	25000	16000	20000	14000
21 Apr#	10943	-	11650	12064	12750	15490	-	-

(Source: \*Agriwatch, # Agmarknet)

### Disclaimer

The information contained in this document has been compiled by Agriwatch from sources believed to be reliable, such as NHB, Agmarknet, etc. and directly from traders in mandis. However, users of this data are requested to use the information with due caution and crosscheck with other sources. This document is not, and should not be construed as an offer to sell or buy any commodities. This document may not be reproduced, distributed or published without the express consent of SFAC