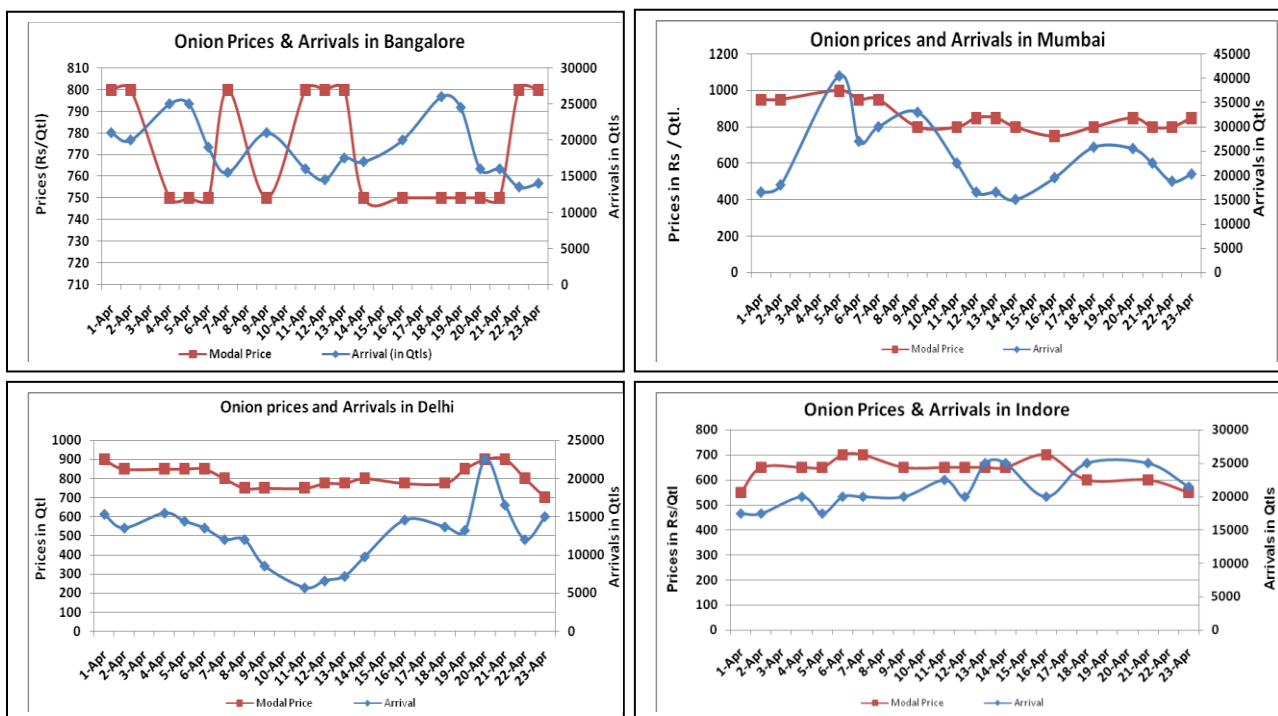


### Onion Fundamentals:

- Mixed sentiment witnessed in Onion major spot market on Saturday.
- Onion supply slightly up in the spot market.
- In Madhya Pradesh Rabi onion acreage is expected to be higher by 53.03% against last year acreage of 91387 hectares. This year Rabi acreage estimate is approximately 139849.53 hectares.
- Acreage is increased due to higher onion prices last year, good weather condition and re-sowing of onion after soybean crop was damaged.
- Average Rabi onion yield in 2015-16 is estimated to be 23.91 ton/Ha against last year's average of 20.6 ton/Ha. Yield is expected higher due to favorable weather conditions, availability of water and lower pest attack as compared to previous year.
- In Bangalore, onion is arriving in market from Maharashtra and local region. Prices are trading in the range of Rs 500-Rs 1000/ quintal.

### Onion wholesale Prices & Arrivals in Producing & Consumption Centers



(Source: AGRIWATCH)

Note: The above graph is made on data collected by Agriwatch through private sources because Agmarknet data are not consistent and lots of gaps in reporting.

### Onion Prices & Arrivals in Major Mandis as on 23.April.2016

Mandis	Lasalgaon	Pimpalgaon	Niphad	Pune	Indore	Delhi	Bangalore
Price (Rs/Qtl)	Closed	Closed	Closed	Closed	300-800	500-1050	500-1100
Arrivals (Qtl)	Closed	Closed	Closed	Closed	21500	15000	14000

### Onion Prices & Arrivals in Major Mandis as on 22.April.2016

Mandis	Lasalgaon	Pimpalgaon	Niphad	Pune	Indore	Delhi	Bangalore
Price (Rs/Qtl)	500-700	700-900	Closed	500-900	Closed	700-1100	500-1100
Arrivals (Qtl)	12000	8000	Closed	12000	Closed	12000	13500

(Source: AGRIWATCH)

### Wholesale and Retail Prices in Major Markets:

Wholesale Prices											Retail Prices
Prices in Rs/Quintal	23.April.2016#			22.April.2016#			Agmarknet 22.April.2016*			Consumer Affairs 22 April.	Consumer Affairs 22 April.
Market	Min. Price	Max. Price	Modal Price	Min. Price	Max. Price	Modal Price	Min. Price	Max. Price	Modal Price	Modal Price	Modal Price
Delhi	500	1050	700	700	1100	800	450	1100	822	825	2200
Lasalgaon	Closed	Closed	Closed	500	700	600	-	-	-	-	-
Pimpalgaon	Closed	Closed	Closed	700	900	800	-	-	-	-	-
Pune	Closed	Closed	Closed	500	900	700	400	800	700	-	-
Mumbai	700	1000	850	700	900	800	750	1100	900	875	1700
Indore	300	800	550	Closed	Closed	Closed	-	-	-	1100	1300
Bangalore	500	1100	800	500	1100	800	600	900	750	1200	1600
Ahmednagar	200	850	700	200	800	550	-	-	-	-	-
Solapur	300	800	550	200	800	600	-	-	-	-	-

(Source: #Agriwatch,\*Agmarknet)

### Onion Arrivals in Major Markets:

Arrivals in Qtls	Ahmedabad	Pune	Mumbai	Delhi	Indore	Bangalore	Ahmednagar	Solapur
23 Apr*	8389	Closed	20250	15000	21500	14000	30000	15000
22 Apr*	4617	12000	18750	12000	Closed	13500	20000	15000
22 Apr#	4617	16830	9700	7791	-	13710	-	-

(Source: \*Agriwatch, # Agmarknet)

### Disclaimer

The information contained in this document has been compiled by Agriwatch from sources believed to be reliable, such as NHB, Agmarknet, etc. and directly from traders in mandis. However, users of this data are requested to use the information with due caution and crosscheck with other sources. This document is not, and should not be construed as an offer to sell or buy any commodities. This document may not be reproduced, distributed or published without the express consent of SFAC